

COMPREHENSIVE SERVICES

- Active Transportation Planning
- Aerial Imagery Distribution
- Annexation Assistance
- Base Maps (City, County and Region)
- Census Data Coordination
- Comprehensive Plans and Revisions
- Demographic Profiles and Projections
- Environmental Studies Coordination
- GIS Assistance and Coordination
- Grant Writing and Administration
- Growth and Development
- Land Use Planning
- Master Street Planning
- Online Mapping
- Public Information
- Redistricting Assistance
- Regional Data Development
- Regional Transportation Plans
- Research
- Stormwater Coordination
- Subdivision Regulations
- Survey Data Acquisition and Quality Assurance
- Transit Analysis/Studies
- Workshops and Training
- Zoning Ordinances



May
2024

- About NWARPC **P.1**
- MPO Membership **P.2**
- Planning Products **P.3**
- Meetings & Staff **P.4**

ABOUT NWARPC

Northwest Arkansas Regional Planning Commission (NWARPC) is a governmental organization established pursuant to ACA 14-56-501 et seq. and was formed in 1966 through a cooperative agreement between Benton County, Washington County, Bentonville, Fayetteville, Rogers, Siloam Springs, and Springdale. Since that time, the Commission has grown to include 38 units of government and other public agency partners.

Besides providing a forum for regional dialogue and cooperation, the Commission provides a wide range of services to member governments including multi-jurisdictional planning, community planning, information services, and special projects. NWARPC is the clearinghouse for socio-economic, environmental, housing, and Census information for Northwest Arkansas; and is a principle contact with state and federal officials and agencies regarding state and federal grants, programs, and regulations affecting local governments.

A primary planning activity of NWARPC is its role serving federal requirements as the region's **Metropolitan Planning Organization (MPO)** and is responsible for the coordination of transportation planning activities for the region, including managing functions for the **Transportation Management Area (TMA)**.

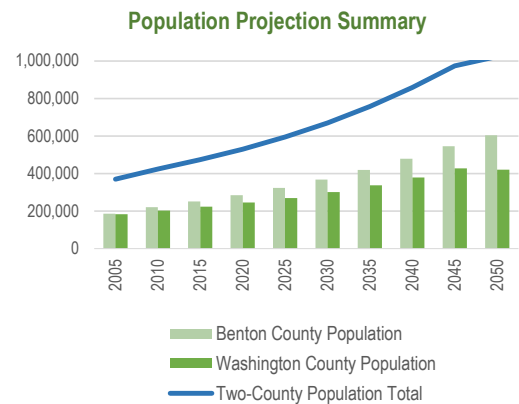
ABOUT THE REGION

The Northwest Arkansas region has experienced a continuous population growth since the 1990s.

As recorded by the Census Bureau, the Benton and Washington County area has grown by over 100,000 in population every decade for the past 30 years:

Census Year	Two-County Population	Population Increase
2000	311,121	100,213
2010	424,404	113,283
2020	530,204	105,800

The area is projected to grow at similar rates in the next decades, with the population reaching over **1 million people by 2050**:



In 2000, the region's urbanized area was **108.8 square miles** with a population density of **1,586** persons per square mile and in 2010, **187.7** square miles and **1,572** persons per square mile. In 2020, the urban area was **198.3** square miles with **1,884.7** persons per square mile.

The region is polycentric, without a single core city. In 2020, the four largest cities, **Fayetteville, Springdale, Rogers, Bentonville**, together made up nearly 58% of the two-county population.



What is a Metropolitan Planning Organization (MPO)?

The Federal-Aid Act of 1973 required the formation of MPOs in any region in which the US Census Bureau designated an urbanized area of over 50,000 residents. An MPO is a transportation policy body made up of representatives from local governments and transportation agencies within the metropolitan planning areas (MPA).

MPOs were created to ensure that federal transportation funding for transportation projects and programs were based on a **cooperative, continuous, and comprehensive** planning process known as the **3C planning process**.

The NWARPC MPO consists of local elected officials, officials of public agencies that administer or operate major modes of transportation, and appropriate state transportation officials who together make up the RPC/Policy Committee.

MPOs with more than 200,000 people in the urbanized area are designated as **Transportation Management Areas (TMAs)**. TMAs are subject to additional federal requirements and receive suballocations of **Surface Transportation Block Grant Program – Attributable (STBGP-A), Transportation Alternative Program (TAP) and Carbon Reduction Program (CRP)** funding. Since 2013, NWARPC has awarded and obligated over **\$116 million** for Northwest Arkansas projects.

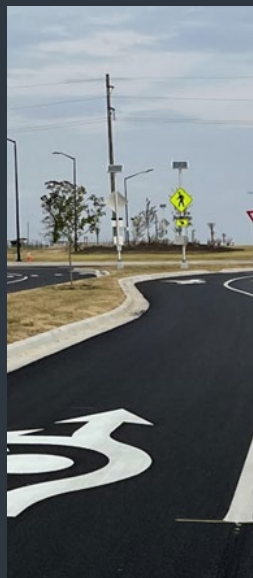
In addition to these suballocated funding programs, NWARPC has been awarded **\$40 million** in competitive USDOT discretionary grant funding for the region since 2010, including TIGER and BUILD grants for the Razorback Greenway and the Missouri-Arkansas Connector/Bella Vista Bypass.

STBGP-A, TAP, & CRP Funding Programs

What do the STBGP-A, TAP, and CRP Funding Programs mean for Northwest Arkansas?

In 2012, the FTA and the FHWA designated the Fayetteville-Springdale-Rogers, AR-MO urbanized area as a Transportation Management Area (TMA). This TMA designation provides STBGP-A, TAP and CRP funds to the NWARPC based on the **2020 Census Urban Area population of 373,687**. NWARPC has awarded and obligated **over \$116 million** for Northwest Arkansas projects since 2013.

The RPC/Policy Committee selects projects through a competitive process for the funding programs. The current policy has a focus on selecting projects of regional significance, which is defined as an improvement to major routes such as north/south corridors and the east/west corridors and frontage roads that improve access, reduce crash rates, and/or relieve congestion to the north/south routes. TAP funds are awarded for the construction of trail or alternative transportation projects. CRP funds are awarded for projects to reduce transportation emissions.



NWARPC MEMBERSHIP & PLANNING PARTNERS

Jurisdictions:

- Avoca
- Bella Vista
- Benton County
- Bentonville
- Cave Springs
- Centerton
- Decatur
- Elkins
- Elm Springs
- Farmington
- Fayetteville
- Garfield
- Gateway
- Gentry
- Goshen
- Gravette
- Greenland
- Highfill
- Hindsville
- Huntsville
- Jane, MO
- Johnson
- Lincoln
- Little Flock
- Lowell
- McDonald County, MO
- Pea Ridge
- Pineville, MO
- Prairie Grove
- Rogers
- Siloam Springs
- Springdale
- Springtown
- Sulphur Springs
- Tontitown
- Washington County
- West Fork
- Winslow

Other Agencies:

- ARDOT
- MoDOT
- Beaver Water District
- NWA National Airport Authority
- Ozark Regional Transit
- Razorback Transit
- University of Arkansas

Non-Voting Transportation Planning Partners:

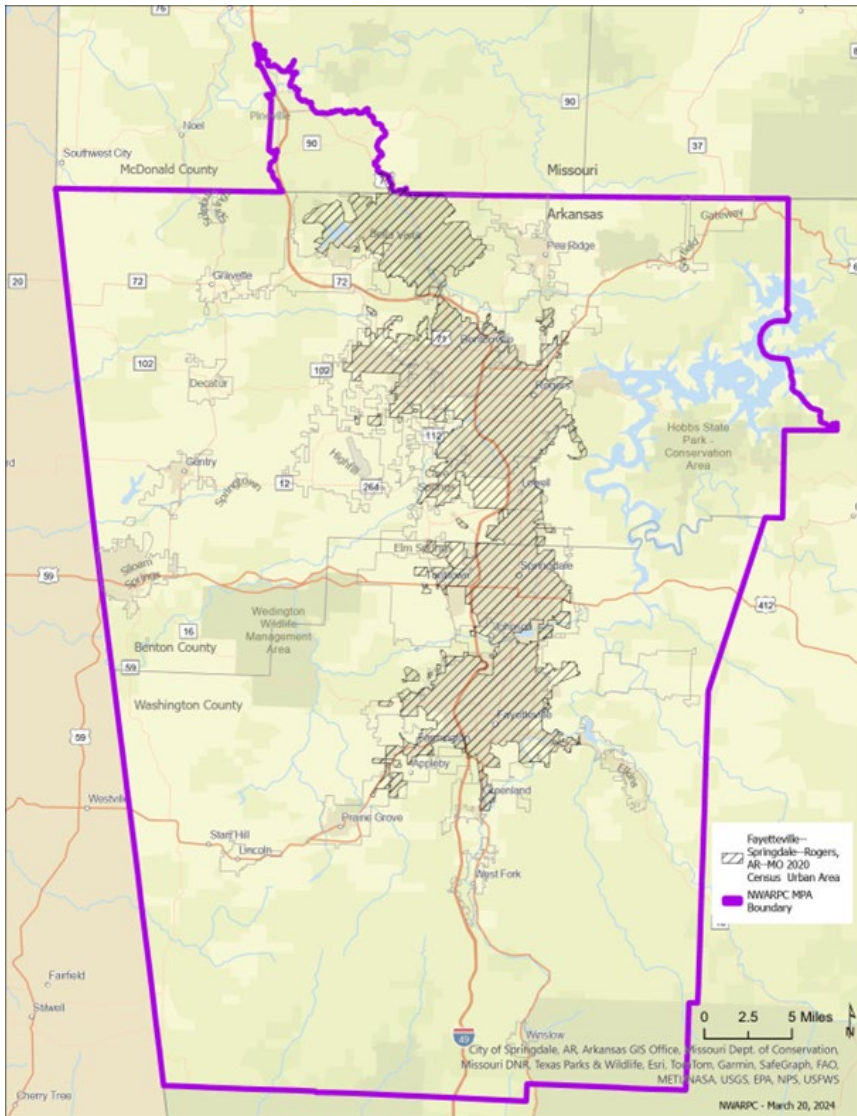
- Federal Highway Administration (FHWA)
- Federal Transit Administration (FTA)
- Arkansas Highway Commission
- Human Services Agencies
- Arkansas Missouri Railroad

OUR WORK: PLANNING FOR THE REGION

Mobility – Communities – Environment – Facilitation

Planning for a better transportation system in NWA is planning for a better future for its people and environment.

NWARPC Metropolitan Planning Area (MPA) Boundary



The MPO includes a **Technical Advisory Committee (TAC)** and the **Regional Planning Commission (RPC)/Policy Committee**. The TAC develops the technical aspects of plans and reports and makes recommendations to the RPC/Policy Committee who makes the MPO's final decisions. Together, the TAC and RPC/Policy Committee make up the Northwest Arkansas Regional Transportation Study (NARTS). Three documents are the principle NARTS products:

- (1) The **Unified Planning Work Program (UPWP)** is produced each year and outlines annual work activities.
- (2) The **Transportation Improvement Program (TIP)** is produced every two to three years and lists all federally funded transportation projects to be undertaken in the four-year period.
- (3) The **Metropolitan Transportation Plan (MTP)** is updated every five years and provides a long range, comprehensive look at the region's transportation needs and implementation strategies while considering financial constraints.

Other NWARPC work products include:

- **NWA Travel Demand Model**
- **NWA Bicycle/Pedestrian Master Plan**
- **NWA Open Space Plan**
- **NWA Transit Development Plan (TDP)**
- **NWA Congestion Management Process (CMP)**
- **NWA Intelligent Transportation Systems (ITS)**
- **NWA Transportation Systems Management and Operations (TSMO)**
- **NWA Regional Comprehensive Safety Action Plan (CSAP)**
- **NWA Energy & Environment Innovation (EEL) Plan**

Envisioning the Future of Northwest Arkansas

Over the past 30 years, the population of Northwest Arkansas increased by over 100,000 people every decade. The area is projected to grow at a similar rate in the next two decades, with the population **reaching over 1 million people by 2050**. This will call for a greater degree of coordination and cooperation in planning by the governmental entities of the area.

The population increase will create new challenges for transportation, development, water quality, waste management and the economy in the area. The people of Northwest Arkansas are clearly calling for alternative transportation options and choose to live in this region for its highly regarded opportunities for work, living conditions, recreation, schools, a clean and safe environment, and overall quality of life.

A primary function of NWARPC is to assist the governmental entities of the area to plan for and meet these expectations. With the continuing support and cooperation of local member jurisdictions and other planning partners, NWARPC will aid in the planning processes necessary to maintain Northwest Arkansas as a haven for the quality of life that our communities enjoy.



NWARPC STAFF

Tim Conklin, AICP – Executive Director
Donna Lange – Office Manager
Nicole Gibbs, AICP – Regional Planner
Tim Reavis, AICP – Regional Planner/
Multimodal Transportation Planner
Cristina Scarlat – GIS Coordinator
Stephanie Shaw – GIS Analyst
Luke Aitken – Assistant Planner

NWARPC REGULAR MEETINGS

NWARPC holds regular meetings with the following committees and groups. The public is also encouraged to attend the meetings. For more information visit www.nwarpc.org/events

Regional Planning Commission (RPC) / Policy Committee

The RPC/Policy Committee meets monthly on the fourth Wednesday at 1:30 pm at the NWARPC office and virtual meeting.

Technical Advisory Committee (TAC)

The TAC Committee meets monthly on the third Thursday at 10:30am at the NWARPC office and virtual meeting.

Northwest Arkansas Active Transportation Committee (ACT)

The NWA Active Transportation (ACT) Committee meets every two months on the third Thursday at 1:30pm at the NWARPC office and virtual meeting.

Northwest Arkansas MS4 Stormwater Compliance Group

The Municipal Separate Storm Sewer Systems (MS4) Compliance Group meets every two months on the third Wednesday at 10:30am virtual meeting.

Northwest Arkansas GIS Users Group

The NWA GIS Users Group meets every two months on the second Tuesday at 10:30am virtual meeting.

NWA Open Space Coalition

The NWA Open Space Coalition meets every two months on the second Wednesday at 10:30am in person.



Northwest Arkansas Regional Planning Commission

Comprehensive – Continuing – Cooperative

1311 Clayton St.
Springdale, AR 72762
479.751.7125
email: comments@nwarpc.org
web: www.nwarpc.org |
f: @rpcnwa

NORTHWEST ARKANSAS REGIONAL PLANNING COMMISSION NOTICE OF NONDISCRIMINATION The Northwest Arkansas Regional Planning Commission (NWARPC) complies with all civil rights provisions of federal statutes and related authorities that prohibit discrimination in programs and activities receiving federal financial assistance. Therefore, the NWARPC does not discriminate on the basis of race, sex, color, age, national origin, religion or disability, in the admission, access to and treatment in NWARPC's programs and activities, as well as the NWARPC's hiring or employment practices. For complaints of alleged discrimination and inquiries regarding the NWARPC's nondiscrimination policies contact Nicole Gibbs, AICP, Regional Planner – EEO/DBE (ADA/504/Title VI Coordinator), 1311 Clayton, Springdale, AR 72762, (479) 751-7125 ext. 106, (Voice/TTY 7-1-1 or 1-800-285-1131) or the following email address: ngibbs@nwarpc.org. This notice is available from the ADA/504/Title VI Coordinator in large print, on audiotape and in Braille. If information is needed in another language, contact Nicole Gibbs. Si se necesita información en otro idioma, comuníquese Nicole Gibbs, ngibbs@nwarpc.org.

AVISO DE NO DISCRIMINACION DE LA COMISION DE PLANIFICACION DEL NORODSTE ME ARKANSAS EL NWARPC cumple con todas las disposiciones de derechos civiles de los estatutos federales y autoridades relacionadas que prohíben la discriminación en programas y actividades que reciben asistencia financiera federal. Por lo tanto, la NWARPC no discrimina por razones de raza, sexo, color, edad, origen nacional, religión o discapacidad, en la admisión, el acceso y el tratamiento en los programas y actividades NWARPC, así como de contratación de empleados de la NWARPC. Las quejas de supuesta discriminación y consultas sobre la política antidiscriminatoria de la NWARPC pueden ser dirigidas a Nicole Gibbs, AICP, planificador regional – EEO/DBE (ADA/504/Título Coordinador VI), 1311 Clayton, Springdale, AR 72762, (479) 751-7125, (Voz/TTY 7-1-1 o 1-800-285-1131) o en la siguiente dirección de correo electrónico: ngibbs@nwarpc.org. Este aviso está disponible en el Coordinador de ADA/504/Título VI en letra grande, cinta de audio y en Braille. Si se necesita información en otro idioma, pongase en contacto con Nicole Gibbs, ngibbs@nwarpc.org.