



Type of Request:

Northwest Arkansas Regional Planning Commission (NWARPC)
Metropolitan Planning Area Boundary Approval Request

No Fiscal Impact

Requested response date: **February 9, 2024**



NORTHWEST ARKANSAS REGIONAL PLANNING COMMISSION

1311 Clayton St., Springdale, Arkansas, 72762

• (479) 751 7125

• Fax: (479) 751 7150

• <http://nwarpc.org>

December 8, 2023

Britni O'Connor
Transportation Planning Specialist
Missouri Department of Transportation (MODOT)
105 West Capitol Avenue
Jefferson City, MO 65102

RE: NWARPC Metropolitan Planning Area (MPA) Approval – Missouri Adjustment

Dear Britni O'Connor:

Reference is made to your request for the Northwest Arkansas Regional Planning Commission (NWARPC), serving as the Metropolitan Planning Organization, to revisit the previously approved Metropolitan Planning Area approved by Governor Jeremiah W. (Jay) Nixon on June 10, 2014.

Northwest Arkansas Regional Planning Commission met with the McDonald County Commission on November 29, 2023, along with Mayor Gregg Sweeten of Pineville to discuss the proposed Metropolitan Planning Area boundary adjustment in Missouri, with all parties agreeing to the proposed revisions.

Please find attached the Northwest Arkansas Regional Planning Commission Metropolitan Planning Area boundary, approved by the NWARPC Policy Committee on December 6, 2023, by Resolution #2023-24.

The revised/proposed Metropolitan Planning Area boundary incorporates all the US Census 2020 Urban Area boundary for the Fayetteville-Springdale-Rogers AR-MO and the City of Pineville, MO City Limits. This action is being taken to comply with Section 134 of Title 23 United State Code that requires "... the boundaries of a metropolitan planning area shall be determined by agreement between the metropolitan planning organization and the Governor. ...(A) shall encompass at least the existing urbanized area and the contiguous area expected to become urbanized within a 20-year forecast period for the transportation plan."

Thank you for your assistance with this request to update the Metropolitan Planning Area boundary in Missouri. Please contact me if you require additional information.

Sincerely,

A handwritten signature in blue ink, appearing to read 'Tim Conklin', is written over a horizontal line.

Tim Conklin, AICP
Executive Director
Northwest Arkansas Regional Planning Commission

Enclosed Resolution #2023-24, including the MPA boundary map

RESOLUTION #2023-24

**A RESOLUTION APPROVING THE METROPOLITAN PLANNING AREA FOR
THE FAYETTEVILLE-SPRINGDALE-ROGERS, AR-MO URBANIZED AREA
FOR MPO TRANSPORTATION PLANNING PURPOSES**

WHEREAS, U.S. Department of Transportation regulations require an areawide, multi-modal transportation plan and a continuing planning process for urbanized areas, and for the area projected to become urban within 20-25 years henceforth; and

WHEREAS, such planning must be carried out by a designated Metropolitan Planning Organization (MPO), which for the urbanized area has been the Northwest Arkansas Regional Planning Commission; and

WHEREAS, Decennial Census data has resulted in the expansion of the Fayetteville-Springdale-Rogers Urban Area within Missouri, thus necessitating a redefined Metropolitan Planning Area (MPA) for transportation planning purposes; and

WHEREAS, consultations with affected parties in Missouri have resulted in a new recommended MPA boundary and planning participation by appropriate authorities.

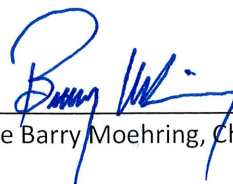
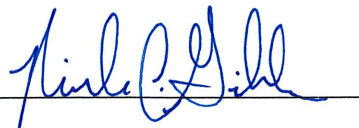
NOW THEREFORE, BE IT RESOLVED BY THE BOARD OF DIRECTORS OF THE NORTHWEST ARKANSAS REGIONAL PLANNING COMMISSION:

SECTION 1. That the Metropolitan Planning Area (MPA) for the Fayetteville-Springdale-Rogers, AR-MO Urban Area, for MPO transportation planning purposes, as shown on the map attached hereto and made a part hereof, is hereby approved.

SECTION 2. That the execution of appropriate documents to effectuate MPO participation by Missouri jurisdictions is hereby approved.

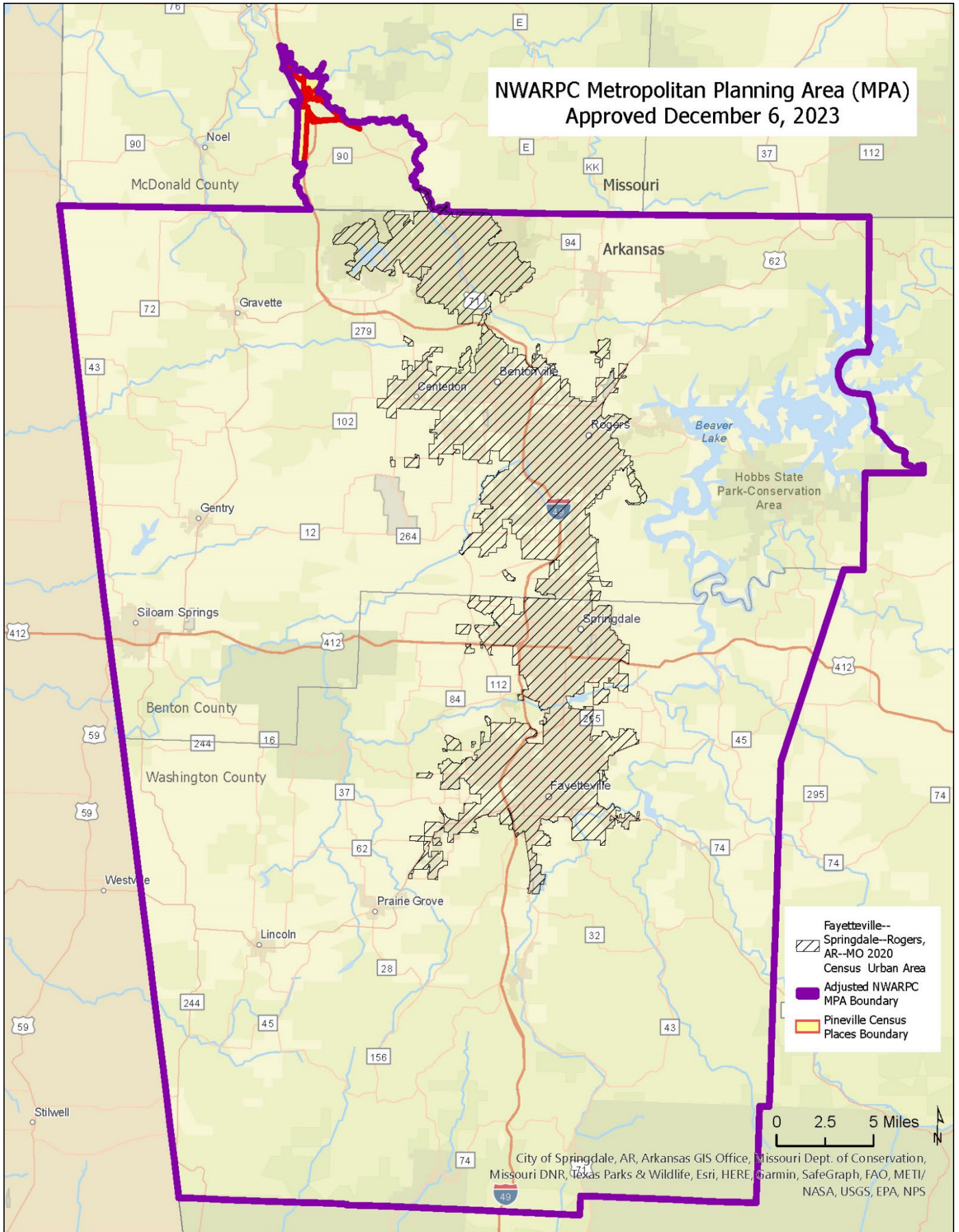
PASSED AND APPROVED BY THIS 6TH DAY OF DECEMBER, 2023

ATTEST:

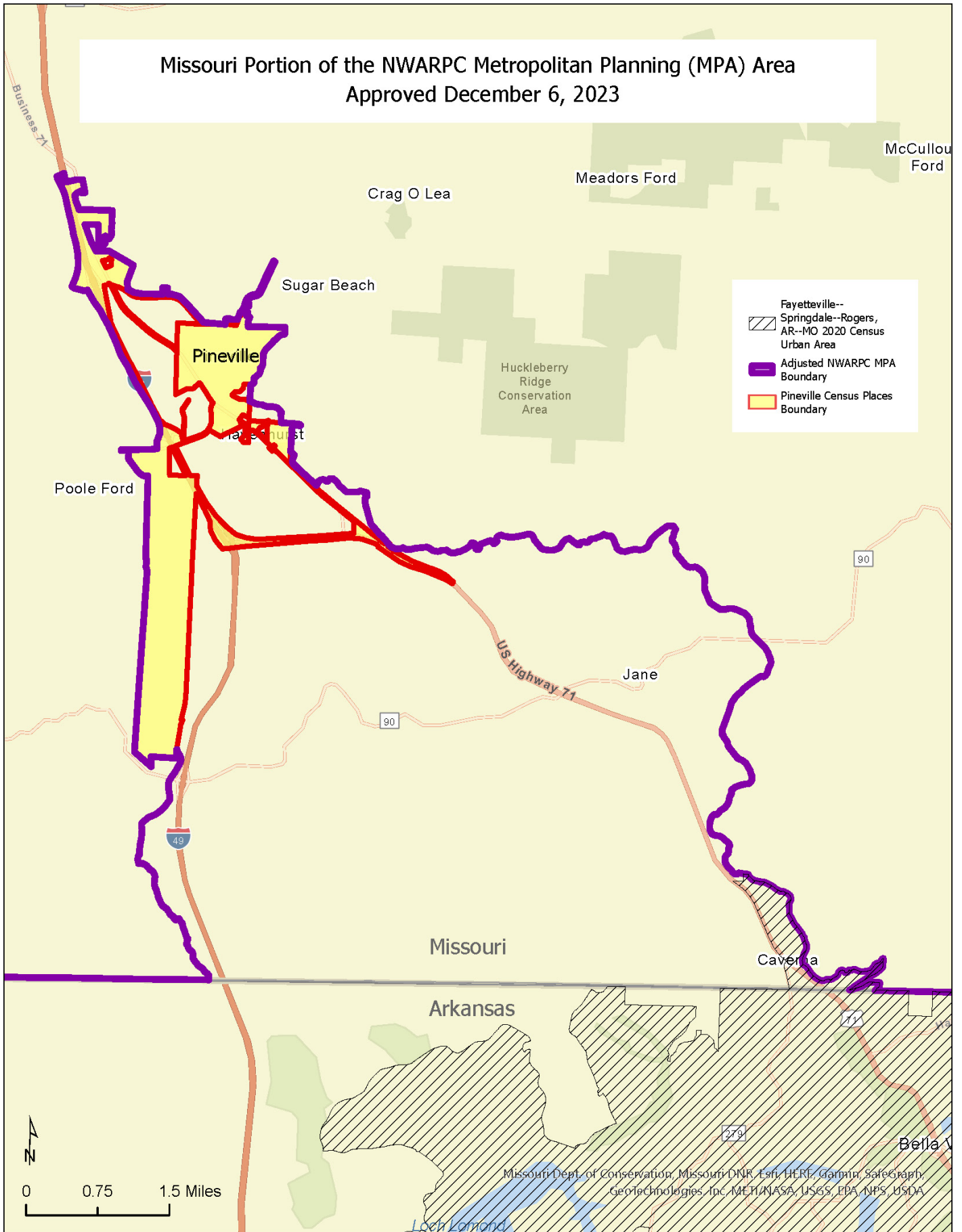


Judge Barry Moehring, Chair, NWARPC

NWARPC Metropolitan Planning Area (MPA)
Approved December 6, 2023



Missouri Portion of the NWARPC Metropolitan Planning (MPA) Area Approved December 6, 2023



Missouri Department of Transportation
Patrick K. McKenna, Director

1.888.ASK MODOT (275.6636)

February 5, 2024

Mr. Tim Conklin, AICP
Northwest Arkansas Regional Planning Commission (NWARPC)
1311 Clayton St.
Springdale, AR 72762

Dear Mr. Conklin:

As required by Section 134 of Title 23 United States Code, on January 31, 2024 Governor Parson approved a revision to the Metropolitan Planning Area (MPA) boundary for the Northwest Arkansas metropolitan area jurisdiction in McDonald County, Missouri. The Northwest Arkansas Regional Planning Commission Board of Directors approved the revision of the MPA boundary on December 6, 2023. Enclosed is a copy of the Governor's approval letter and supporting documentation.

As required by federal regulation 23 CFR 450.312, the approved MPA boundary will be provided to Federal Highway Administration and Federal Transit Administration for informational purposes.

It is recommended that the MPO review and revise their plans and policies to incorporate the new boundary. Furthermore, MoDOT will incorporate the revised boundary in its Transportation Management System.

If you have questions, please contact me at (573) 751-6550.

Sincerely,

Britni O'Connor

Britni O'Connor
Planning and Programming Coordinator

Enclosure

cc: Cecelie Cochran – FHWA
Daniel Nguyen – FTA



Our mission is to provide a world-class transportation system that is safe, innovative, reliable and dedicated to a prosperous Missouri.

www.modot.org

Missouri Department of Transportation
Patrick K. McKenna, Director

1.888.ASK MODOT (275.6636)

January 17, 2024

The Honorable Michael L. Parson
Governor of Missouri
State Capitol
Jefferson City, MO 65101

Dear Governor Parson:


Section 134 of Title 23 United States Code requires metropolitan areas to establish Metropolitan Planning Area (MPA) boundaries which shall be approved by the respective Metropolitan Planning Organizations (MPOs) and the Governor. The MPA boundary sets planning limits for MPO Metropolitan Transportation Plans and Transportation Improvement Programs. According to Federal Highway Administration and Federal Transit Administration regulations, these MPA boundaries must encompass the Census designated urbanized areas and contiguous areas expected to be urbanized within the twenty-year forecast period.

The Northwest Arkansas Regional Planning Commission Board of Directors approved a revision to the MPA boundary for the Northwest Arkansas metropolitan area jurisdiction in McDonald County, Missouri, December 6, 2023. Attached is a map indicating the revised boundary. The MPO has satisfactorily conducted all required transportation planning activities/requirements within the applicable metropolitan planning area. We are satisfied the necessary federal requirements were met in its development. Therefore, to comply with Section 134 of Title 23 United States Code, we request your approval of the revised Northwest Arkansas Regional Planning Commission Metropolitan Planning Area boundary.

Sincerely,


Patrick K. McKenna
Director

Enclosure

Approved: 

Date: 1-31-24

Title: Governor of Missouri



Our mission is to provide a world-class transportation system that is safe, innovative, reliable and dedicated to a prosperous Missouri.

www.modot.org