

Appendix D: Project Prioritization

The Northwest Arkansas region is committed to Vision Zero to eliminate roadway fatalities and serious injuries by 2038. The NWA Vision Zero Plan establishes the goals and actions that need to be taken by the state, regional, and local agencies along with supporting partners to achieve Vision Zero. This report serves to provide direction on project prioritization and safety countermeasure selection for traffic safety projects across Northwest Arkansas. The actions, Prioritization Frameworks, and the proven safety countermeasures in the NWA Vision Zero Plan should be used congruently to guide the implementation of the strategies that specifically relate to roadway safety infrastructure improvements.

The information in this report is a guide for the Region and member agencies to prioritize and implement traffic safety projects using the Safe Systems Approach. The Northwest Arkansas Regional Planning Commission (NWARPC) will be able to use the Project Prioritization Frameworks to further prioritize and implement projects as funding is allocated for safety projects.

This report has two sections. In the first section, the Project Prioritization Framework outlines the criteria for prioritization and select location-specific and systemic safety projects. The second section lists the projects along the high-injury network and the outputs from the Safer Streets Priority Finder model along with their scoring based on these criteria.

Project Prioritization Framework

The Project Prioritization Framework will support the Northwest Arkansas region in the decision-making process to target its Vision Zero strategies and ultimately eliminate roadway fatalities and serious injuries. The Frameworks will allow the region to:

1. identify the locations to focus its limited resources and the projects to prioritize at those priority locations, and
2. prioritize systemic improvements that member agencies can do across their roadway networks to increase safety without needing to do further analysis.

This section outlines the prioritization process for location-specific projects and systematic proactive projects.

Location-Specific Project Prioritization and Monitoring Frameworks

Location-specific project prioritization ranks roadway segments by safety need through a data-driven process. In this framework, five metrics that incorporate roadway crash history, crash severity, community input, and equity are used to prioritize roadway segments. The metrics are weighted to help ensure that projects deployed at the prioritized locations will have the best likelihood to help the region and member agencies achieve Vision Zero. Total scores were developed for each location-specific projects on the HIN. Note that since all of the corridors are on the HIN, the corridors are ranked equally under that metric. Projects were categorized into three projects tiers—Tier 1 being the highest priority and Tier 3 being the lowest—with approximately equal number of projects in each tier. Adjustments were made to ensure projects with the same total scores were always in the same tier.

The table below summarizes the five metrics and outlines the weighting for each.

Table 1: Metrics for the Location-Specific Project Prioritization Framework

Metric	Description	Weight	Score Type
Number of Killed or Seriously Injured (KSI) Crashes	The total number of KSI crashes per mile (density) on the roadway segment in the most recent five years of crash data. This is the top-weighted metric to prioritize the goal of Vision Zero—eliminate fatalities and serious injuries on roadways across Northwest Arkansas. Crash data is sourced from both the Arkansas and Missouri Departments of Transportation.	30%	Rank by Tiers 3 – Highest 2 – Middle 1 - Lowest
On the Overall High Injury Network (HIN)	Roadway segments that are on the Overall HIN should be prioritized in the region's overall roadway project prioritization process. While project prioritization would score all projects, using the overall HIN metric ensures safety is paramount in ranking all roadway projects. This metric weights where crashes are occurring at the greatest injury severity and density through a sliding windows analysis.	20%	Part of HIN 3 – Yes 0 - No
Equity and Degrees of Disadvantage	The highest Degree of Disadvantage area that the roadway segment travels through. Equity analysis identifies the areas of the region where a higher proportion of historically disadvantaged people lives along with areas of persistent poverty that can result in social vulnerability.	25%	Rank by Tiers 3 – Highest degree of disadvantage, persistent poverty, and social vulnerability 2 – Some degree of disadvantage, persistent poverty, or social vulnerability 1 - Minimal degree of disadvantage, persistent poverty, or social vulnerability
Total Crashes	The total number of crashes per mile (density) of all severity types that occurred on the roadway segment in the most recent five years of crash data. Crash data is sourced from both the Arkansas and Missouri Departments of Transportation.	10%	Rank by Tiers 3 – Highest tier of total crashes 2 – Middle tier of total crashes 1 – Lowest tier of total crashes
Number of Unsafe Location Comments from Public	The total number of comments received from the public about the roadway segment being unsafe. Road users' perception of safety can help proactively identify unsafe locations that may not have a significant crash history. Data is sourced from the mapping activity conducted as part of the NWA Vision Zero Plan process.	15%	Rank by Tiers 3 – Highest density of comments 2 – Medium density of comments 1 – Lowest density of comments 0 – no comments
		100%	

Once the region and its member agencies have prioritized locations for projects, an additional framework will be used to identify and rank the countermeasures to implement at the priority locations. The Location-Specific Prioritized Project Monitoring Framework will allow the region to move location-specific projects through the process to select countermeasures and tracking of outcomes through these seven steps outlined in the table below. Some projects along the HIN have already been identified by member agencies for safety projects and the countermeasures may have already been identified based on understanding of crashes. This framework should be used to track and evaluate projects consistently and objectively for accountability and flexibility.

Table 2: Steps in the Location-Specific Prioritized Project Monitoring Framework

Step	Description
1 Understanding Crash Causation	<p>Identify individual countermeasures for each of the priority corridors by evaluating the crash causation in the most recent five years of crash data. Evaluate the crash types, contributing factors, and roadway context that may have contributed to crashes, with particular attention to KSI crashes. When evaluating corridors that are on the Overall HIN, identify which of the modal HIN the corridor is on to identify which mode has been most at risk for KSI crashes. As needed, look further into crash causes, by reviewing the full crash reports that occurred on the prioritized corridor.</p> <p>Longer road corridors from the Location-Specific Prioritization Framework can be further segmented. This segmentation can be done for several reasons a.) to match a change in context or configuration of the road (e.g. the road goes from six lanes to four), b.) to select a more management segment length because of limited resources, c.) to match the limits of another corresponding project (e.g. pavement restoration), or d.) to match changes in the prevailing crash risk factors along the corridor.</p>
2 Initial Safety Countermeasures Selection	<p>Conduct a review of the corridor to select safety countermeasures and key design features that would increase traffic safety on the priority corridor. Use the information on crash causation from Step 1 to develop an initial countermeasures list from the proven safety countermeasures and associated toolkit.</p>
3 Final Safety Countermeasures Selection	<p>Fine-tune the countermeasures list from Step 2 based on feasibility, funding, and context. The Crash Modification Factors (CMF)¹ information about each countermeasure (Step 4) should provide insight into the final selection of countermeasures.</p>
4 CMF Modeling	<p>Model CMFs to estimate if the safety countermeasures selected will eliminate KSI crashes. Values for CMFs are used to identify safety countermeasures with the greatest possible safety benefit for a particular location, with the goal of layering multiple safety countermeasures to get a CMF of zero.</p>
5 Design and Engineering	<p>After the set of countermeasures is determined for the location from Steps 3 and 4, begin design and engineering with the goal to provide safe and comfortable places for all road users, especially vulnerable users. Ensure the countermeasures are designed in a layered approach to complement each other and work together to reduce crash severity and eliminate KSI crashes.</p>
6 Construction	<p>Implement the countermeasures. Ensure the construction process follows work zone safety best practices to allow the safe movement of all road users.</p>
7 Safety Outcome Performance	<p>Monitor the safety outcomes and performance of projects by conducting field observations, conducting surveys of road users' perception of safety, and reviewing crash data to determine if desired behaviors changed and if crash frequency and severity are reduced. Perform systemic evaluation across the region and within member agency jurisdictions to see how projects constructed are working toward eliminating KSI crashes by 2038.</p>

1 USDOT Crash Modification Factors Clearinghouse provides a database of factors that estimates the possible effect countermeasures could have on reducing crashes. <https://www.cmfclearinghouse.org/>

Systemic Proactive Project Prioritization Framework

Systemic treatment implementation is a common Vision Zero approach that identifies many locations for the rapid application of proven safety countermeasures designed to reduce the number of KSI crashes. Systemic treatments can be proactively implemented throughout the regional and in member agency jurisdictions and are generally considered well-suited for widespread implementation because of their safety effectiveness, cost effectiveness, and feasibility for implementation at multiple locations. These traffic safety infrastructure improvements can usually be made where common safety risk factors exist and often do not require any further analysis implement at specific locations.

The table below lists the safety countermeasures that are recommended for proactive, systemic implementation in Northwest Arkansas. Specific action item language can be found in the action item tables.

Table 3: Systemic Proactive Safety Countermeasures

Countermeasure	Action ID
Pedestrian lighting	1-17
Arterial roadway lighting	1-18
No turns on red	2-1
Pedestrian friendly cycle lengths	2-2
Separation for pedestrians/bicyclists	2-7
Median refuge and pedestrian signals	2-8
Shorter distances between crossings	2-9
Road diets (where applicable)	2-10
Closing slip lanes	2-12
Leading Pedestrian Intervals	2-13
Pedestrian recall	2-14
Countdown pedestrian signal heads	2-15
Removing permissive lefts	2-16
Sidepaths and separated bike lanes	2-17
Edge and centerline rumble strip treatments	2-18
Grade separated pedestrian/bicycle crossings	2-19
Daylight intersections	2-20
Sidewalk buffers	2-22
Access management	2-24
Nighttime speed limits	4-1
Reduce local roadway speed limits to 20mph	4-3
Adjust signal timing for speed management	4-6
Tighter turn radii and truck aprons	4-8

Northwest Arkansas Regional Priority Location-Specific Projects

Location-specific projects across Northwest Arkansas have been identified through the development of the HIN along with using the Safer Streets Priority Finder model to identify a variety of corridors and roadway segments where safety risks could be addressed proactively. The following tables show the prioritized lists of corridors along the HIN. The maps and tables include all projects in the NWA region along with sorted tables and corresponding maps for projects in the following communities:

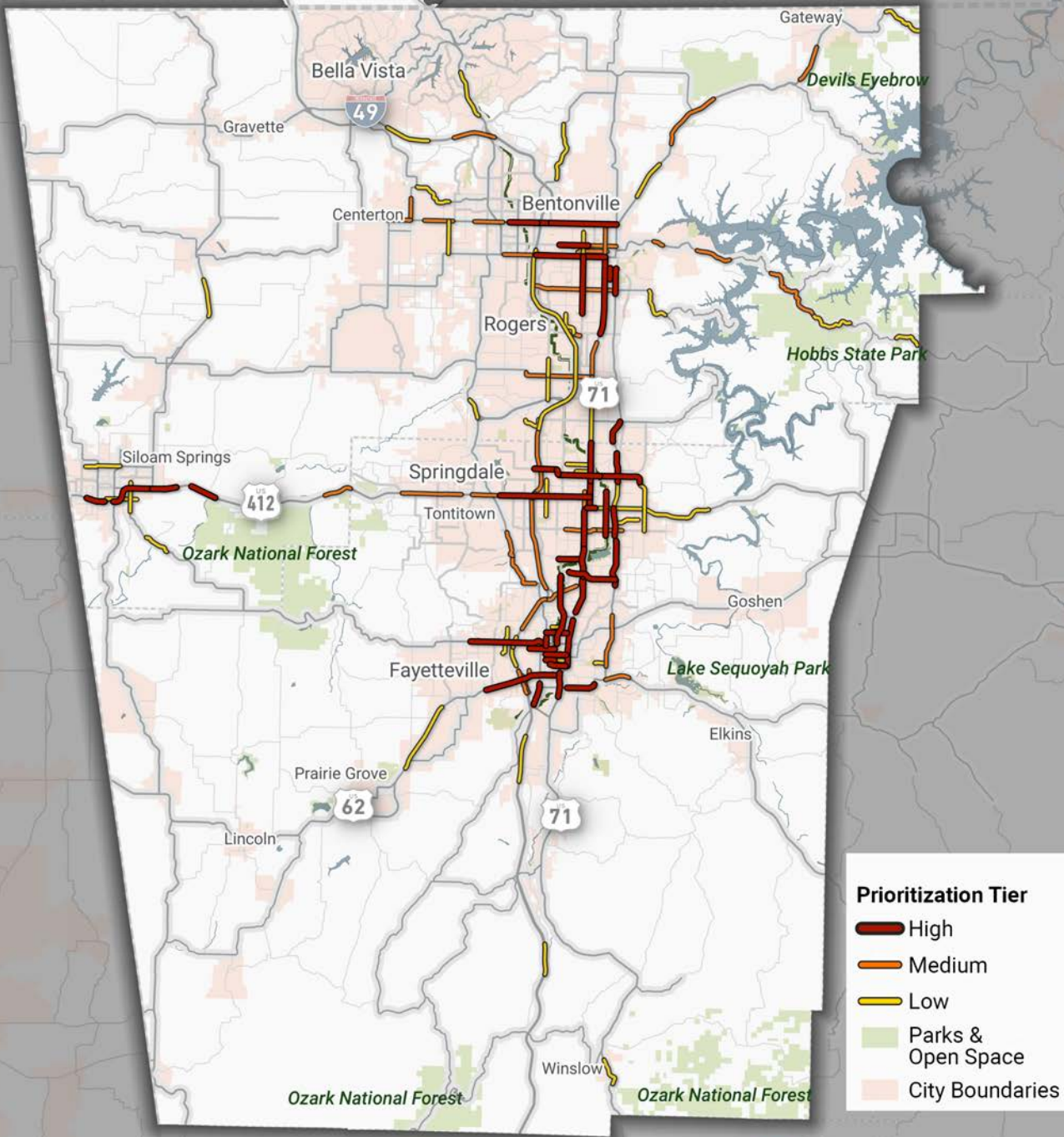
- Bella Vista
- Bentonville
- Centerton
- Fayetteville
- Rogers
- Siloam Springs
- Springdale

Each table lists the following information related to the location-specific project:

1. ID (Tier# - Rank within Tier)
2. Corridor Name
3. To/From Extents
4. Municipality
5. Length (miles)
6. Project Tier
7. Total Score
8. KSI Score
9. KSI Crashes/Mile (Density)
10. All Crash Score
11. All Crashes/Mile (Density)
12. Equity Score
13. HIN Score
14. Public Comment Score
15. HIN Modes
 - p: pedestrian
 - b: bicycle
 - mc: motorcycle
 - mv: motor vehicle

High Injury Network Project Corridors

Northwest Arkansas



Prioritization Tier

- High
- Medium
- Low
- Parks & Open Space
- City Boundaries

Note: Maps based on Arkansas DOT ACAT data and Missouri DOT STARS data for all recorded crashes between 2017-2021.



Table 4: NWARPC HIN

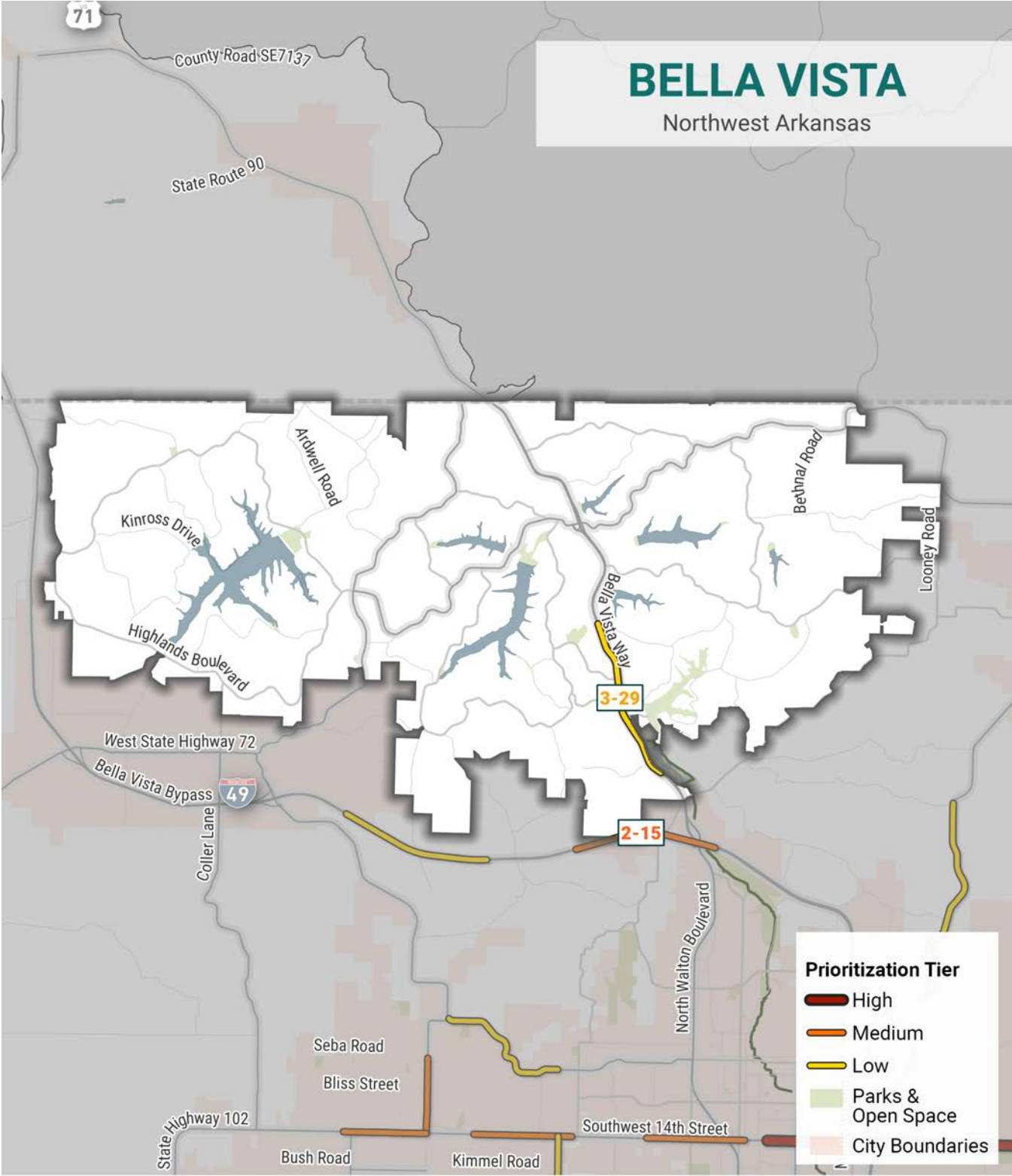
ID	Corridor	From Extent	To Extent	Municipality	Length (mi)	Project Tier	Total Score	KSI Score	KSI Crashes/Mile	All Crash Score	All Crashes/Mile	Equity Score	HIN Score	Public Comment Score	HIN Modes
1-1	West Robinson Avenue	Turner Street	South Thompson Street	Springdale	0.4	1	2.85	3	5.4	3	412.8	3	3	2	mv
1-2	South Thompson Street	West Lakeview Drive	West Emma Avenue	Springdale	3.2	1	2.85	3	8.8	3	311.9	3	3	2	mc, mv, p
1-3	North Garland Avenue	North of West Berry Street	South of West Lawson Street	Fayetteville	0.4	1	2.75	3	5.0	2	153.8	3	3	2	b
1-4	North Old Missouri Road	East Emma Avenue	South of East Randall Wobbe Lane	Springdale	1.3	1	2.75	3	5.4	2	131.5	3	3	2	mv, p
1-5	Southeast 14th Street	Water Tower Road/Bekaert Drive	West of Phyllis Street	Bentonville, Rogers	0.6	1	2.6	3	6.4	3	1002.3	2	3	2	mv
1-6	West Martin Luther King Jr. Boulevard	West Ozark Trail	South School Avenue	Fayetteville	3.5	1	2.6	3	7.8	3	439.3	2	3	2	b, mc, mv, p
1-7	North College Avenue	South of East Township Street	East Center Street	Fayetteville	2.1	1	2.6	3	5.2	3	372.9	2	3	2	mv, p
1-8	West Sunset Avenue	South Thompson Street	Westside Village Street	Springdale	4.1	1	2.6	3	8.8	3	438.1	2	3	2	mc, mv, p
1-9	West Wedington Drive	MP 16.40	North Garland Avenue	Fayetteville	3.5	1	2.5	3	6.6	2	245.1	2	3	2	b, mc, mv, p
1-10	South 5th Street	West Olrich Street	West Oak Street	Rogers	0.5	1	2.5	3	6.0	2	11.9	2	3	2	p
1-11	US 412;AR 59	AR 59	West of AR 59	Siloam Springs	2.1	1	2.5	3	5.6	2	202.0	2	3	2	mv
1-12	US 412	AR 59	MP 11.65	Siloam Springs	1.1	1	2.5	3	8.2	2	178.2	2	3	2	mc, mv
1-13	North Thompson Street	West Emma Avenue	West County Line Road	Springdale	1.7	1	2.45	3	5.2	2	225.2	3	3	0	mv, p
1-14	West Hudson Road	Water Tower Road/Bekaert Drive	North 2nd Street	Rogers	3.0	1	2.45	2	3.3	2	168.7	3	3	2	mc, mv
1-15	East Huntsville Avenue	Mill Street	East Emma Avenue	Springdale	2.0	1	2.45	2	4.5	2	97.7	3	3	2	mv, p
1-16	West Sycamore Street	North Woodland Avenue	North Garland Avenue	Fayetteville	0.9	1	2.45	2	1.1	2	90.9	3	3	2	mv
1-17	South Razorback Road	South of South Treat Street/Dowell Drive	Baum Drive	Fayetteville	1.0	1	2.45	2	1.0	2	29.9	3	3	2	b
1-18	South School Avenue	West Nonnamaker Drive	South Archibald Yell Boulevard	Fayetteville	1.1	1	2.45	2	0.9	2	54.5	3	3	2	mv
1-19	Powell Street	South of Southland Drive	Caudle Avenue	Springdale	2.0	1	2.45	2	2.0	2	32.2	3	3	2	b, p
1-20	West Olive Street	East of North 16th Street	Kingswood Drive	Rogers	1.3	1	2.45	2	0.8	2	89.2	3	3	2	mv, p
1-21	East 15th Street	South College Avenue	North of South Happy Hollow Road	Fayetteville	1.3	1	2.45	2	1.5	2	90.6	3	3	2	mv
1-22	North Crossover Road	MP 9.80	South of Hillside Terrace	Fayetteville, Springdale	1.2	1	2.35	3	8.3	3	363.3	1	3	2	mc, mv
1-23	Southeast 14th Street	Southeast E Street	West of Phyllis Street	Bentonville	1.3	1	2.3	2	3.1	3	495.0	2	3	2	mv
1-24	Elm Springs Road	White Road	West of North 48th Street	Springdale	1.1	1	2.3	2	0.9	3	333.1	2	3	2	mc, mv
1-25	West Walnut Street	South 8th Street/North 8th Street	East of US 71	Rogers	3.2	1	2.3	2	4.4	3	309.3	2	3	2	b, mc, mv, p
1-26	White Road	West Huntsville Avenue	Elm Springs Road	Springdale	0.2	1	2.2	2	4.2	2	97.7	2	3	2	mv
1-27	US 412	MP 14.15	MP 8.85		1.2	1	2.2	3	7.5	2	163.3	2	3	0	mc, mv

ID	Corridor	From Extent	To Extent	Municipality	Length (mi)	Project Tier	Total Score	KSI Score	KSI Crashes/Mile	All Crash Score	All Crashes/Mile	Equity Score	HIN Score	Public Comment Score	HIN Modes
1-28	West Maple Street	North Garland Avenue	North Highland Avenue	Fayetteville	0.9	1	2.2	2	1.1	2	91.9	2	3	2	p
1-29	North Crossover Road	MP 7.15	North of Brandon Circl	Fayetteville, Springdale	2.1	1	2.2	2	4.8	2	207.6	2	3	2	mc, mv
1-30	US 412	South Carl Street	East of South Washington Street	Siloam Springs	0.9	1	2.2	3	10.5	2	228.9	2	3	0	mc, mv
1-31	South 8th Street	West Walnut Street	East Pleasant Grove Road	Rogers	3.5	1	2.2	2	4.3	2	153.3	2	3	2	mv, p
1-32	Main Drive	East of Ball Street	North College Avenue/South Thompson Street	Fayetteville, Johnson, Springdale	1.1	1	2.2	2	1.9	2	66.1	2	3	2	mv
1-33	West Huntsville Avenue	Mill Street	White Road	Springdale	1.9	1	2.2	2	1.6	2	161.0	2	3	2	mv
1-34	West Dickson Street	North Arkansas Avenue	Garland Avenue	Fayetteville	0.4	1	2.2	2	2.6	2	36.0	2	3	2	b
1-35	West Center Street	South East Avenue	North Harmon Avenue	Fayetteville	0.7	1	2.2	2	1.4	2	69.1	2	3	2	p
1-36	North College Avenue	North of East Sunbridge Drive	Churchill Avenue/West Lakeview Drive	Fayetteville, Springdale	4.7	1	2.2	2	2.3	2	164.9	2	3	2	mv, p
1-37	South Old Missouri Road	East Robinson Avenue	Ivey Lane	Fayetteville, Springdale	1.3	1	2.2	3	6.4	2	151.9	2	3	0	mc, mv, p
1-38	N Exit 3900	South extent of North Exit 3900	North extent of North Exit 3900	Fayetteville	0.1	1	2.2	3	13.6	2	74.6	2	3	0	p
1-39	West Cleveland Street	West of North Willis Avenue	North Sang Avenue	Fayetteville	1.2	1	2.2	2	3.5	2	51.2	2	3	2	p
1-40	South 1st Street	East Glendale Lane	West Oak Street	Rogers	1.2	1	2.2	2	0.9	2	63.8	2	3	2	mc
1-41	Dick Trammel Highway	AR 264	Remington Drive	Springdale	1.0	1	2.2	3	4.9	2	61.2	2	3	0	mc
1-42	North Gregg Avenue	North of West Van Asche Drive	West North Street	Fayetteville	3.2	1	2.2	2	2.5	2	108.8	2	3	2	b, mv, p
1-43	South Dixieland Road	Cunningham Avenue	West Walnut Street	Rogers	2.6	1	2.2	2	3.5	2	75.4	2	3	2	mv, p
1-44	East Joyce Boulevard	North Crossover Road	North Steele Boulevard	Fayetteville	2.2	1	2.2	2	2.7	2	220.7	2	3	2	mv
2-1	Fulbright Expressway	MP 123.20	I 49;US 62;US 71	Fayetteville	1.8	2	2.15	2	3.4	2	171.7	3	3	0	mc, mv
2-2	South Pleasant Street	South Thompson Street	Watson Avenue	Springdale	0.9	2	2.15	2	2.2	2	148.2	3	3	0	mv
2-3	Fulbright Expressway	MP 2.50	I 49;US 62;US 71	Fayetteville	1.6	2	2.15	2	2.5	2	56.2	3	3	0	mc
2-4	North 8th Street	West Walnut Street	West Hudson Road	Rogers	1.5	2	2.15	2	4.0	2	156.5	3	3	0	mc, mv
2-5	South Futrall Drive	West Old Farmington Road	West of Custer Lane	Fayetteville	0.8	2	2.15	2	1.2	2	45.9	3	3	0	mv
2-6	South Sang Avenue	West Stone Street	West Martin Luther King Jr. Boulevard	Fayetteville	0.3	2	2.15	2	3.7	2	77.4	3	3	0	b
2-7	West Don Tyson Parkway	West of Johnson Road	Turner Street	Springdale	1.6	2	2.15	2	0.6	2	105.8	3	3	0	mv
2-8	East Don Tyson Parkway	Turner Street	East of Old Missouri Road	Springdale	1.3	2	2.15	2	0.8	2	68.9	3	3	0	mv
2-9	West Olive Street	West of North 14th Place	North 2nd Street	Rogers	1.2	2	2.15	2	0.8	2	97.8	3	3	0	mv, p
2-10	West Persimmon Street	East of North 7th Street	North 22nd Street	Rogers	1.4	2	2.15	2	1.4	2	20.3	3	3	0	p

ID	Corridor	From Extent	To Extent	Municipality	Length (mi)	Project Tier	Total Score	KSI Score	KSI Crashes/Mile	All Crash Score	All Crashes/Mile	Equity Score	HIN Score	Public Comment Score	HIN Modes
2-11	Southeast Walton Boulevard	West extent of Southeast Walton Boulevard	East of Moberly Lane	Bentonville	1.3	2	2.05	2	2.3	3	544.9	1	3	2	mc, mv
2-12	East Wagon Wheel Road	Puppy Creek Road	I-40;US 71	Springdale	0.1	2	2.05	3	8.4	3	395.2	1	3	0	mv
2-13	Southwest 14th Street	South Main Street	MP 5.05	Bentonville	1.3	2	2.05	2	4.6	3	261.5	1	3	2	mv, p
2-14	Pleasant Crossing Boulevard	South of Pleasant Crossing Boulevard	West Pleasant Grove Road	Rogers	0.1	2	2.05	3	14.0	3	322.8	1	3	0	mv
2-15	Bella Vista Bypass	MP 21.95	MP 0.40	Bella Vista, Bentonville	1.9	2	1.95	2	4.2	2	87.9	1	3	2	mv, p
2-16	North Bloomington Street	East Monroe Avenue	MP 7.40	Lowell	1.6	2	1.95	2	3.7	2	93.7	1	3	2	mv
2-17	AR 12	MP 24.65	East of Hilltop Drive		3.2	2	1.95	2	2.8	2	19.1	1	3	2	mc
2-18	North Crossover Road	South of Deerpath Drive	South of East Shagbark Bend	Fayetteville	2.4	2	1.95	2	4.2	2	182.9	1	3	2	mc, mv
2-19	AR 12	Mountain Lake Drive/Dream Valley Road	Stoneridge Road	Prairie Creek	0.5	2	1.95	3	24.0	2	181.2	1	3	0	mv
2-20	East Henri de Tonti Boulevard	West of Towne Park Road	North Barrington Roa	Tontitown	1.1	2	1.95	2	0.9	2	202.7	1	3	2	mv
2-21	South Bloomington Street	East Monroe Avenue	West Apple Blossom Avenue	Lowell	1.0	2	1.95	2	3.0	2	154.4	1	3	2	mv
2-22	West Centerton Boulevard	North Main Street	East of Western Heights Circle	Centerton	1.1	2	1.95	2	1.8	2	118.2	1	3	2	mv
2-23	West Henri de Tonti Boulevard	East of Klenc Road	West of CR 58	Tontitown	2.7	2	1.95	2	4.1	2	40.7	1	3	2	mc, mv
2-24	West Monroe Avenue	North Bloomington Street	MP 4.00	Lowell	3.1	2	1.95	2	2.2	2	124.0	1	3	2	mv
2-25	East Centerton Boulevard	MP 1.25	MP 2.40	Bentonville, Centerton	1.3	2	1.95	2	3.1	2	223.1	1	3	2	mc, mv
2-26	US 62	MP 11.80	MP 8.25	Avoca	3.0	2	1.95	3	5.7	2	36.7	1	3	0	mc, mv
2-27	Pleasant Crossing Drive	Pleasant Crossing Boulevard	South Dixieland Road	Rogers	0.3	2	1.95	3	6.5	2	71.5	1	3	0	b
2-28	East Huntsville Road	South Crossover Road	West of Jarnigan Street	Fayetteville	1.1	2	1.95	2	0.9	2	90.9	1	3	2	mv
2-29	South Shiloh Drive	North extent of South Shiloh Drive	MP 1.15	Fayetteville	1.1	2	1.95	2	1.8	2	148.2	1	3	2	mv
2-30	North Main Street	Town Vu Road	West Centerton Boulevard	Centerton	1.0	2	1.95	2	4.0	2	98.1	1	3	2	p
2-31	South Maestri Road	Western Trails Drive	South of Greathouse Springs	Springdale, Tontitown	1.2	2	1.95	2	2.5	2	35.8	1	3	2	mc
2-32	US 62	MP 23.60	MP 21.90	Garfield, Gateway	1.7	2	1.95	3	10.0	2	64.7	1	3	0	mc, mv
2-33	US 412	MP 21.70	MP 1.10		1.2	2	1.95	3	7.2	2	157.6	1	3	0	mc, mv
2-34	AR 112	MP 6.05	East of North Cris Hollow Road	Fayetteville, Johnson	1.9	2	1.95	2	1.6	2	33.2	1	3	2	mc
2-35	I 49;US 62;US 71	MP 114.75	MP 90.65	Fayetteville, Johnson, Springdale	7.6	2	1.95	2	3.3	2	111.8	1	3	2	mv, p
2-36	AR 12	MP 9.25	Beaver Shores Road	Prairie Creek	1.6	2	1.95	3	6.9	2	51.9	1	3	0	mv
2-37	West New Hope Road	South 1st Street	East of I-49	Rogers	3.7	2	1.95	2	2.5	2	95.9	1	3	2	mv, p

ID	Corridor	From Extent	To Extent	Municipality	Length (mi)	Project Tier	Total Score	KSI Score	KSI Crashes/Mile	All Crash Score	All Crashes/Mile	Equity Score	HIN Score	Public Comment Score	HIN Modes
3-1	Northeast Hudson Road	North of Happy Trails Drive	MP 10.60	Avoca, Rogers	1.8	3	1.9	2	2.2	2	23.9	2	3	0	mc
3-2	Monte Northeast Road	East New Hope Road	AR 94	Rogers	1.6	3	1.9	2	3.7	2	26.3	2	3	0	mv
3-3	South 40th Street	North of Haile Lane	North of Holt Avenue	Springdale	1.6	3	1.9	2	1.2	2	75.6	2	3	0	mv
3-4	Backus Avenue	East of San Miguel Drive	North Thompson Street	Springdale	1.1	3	1.9	2	1.8	2	87.3	2	3	0	p
3-5	AR 59	MP 27.85	MP 22.40		1.7	3	1.9	2	3.5	2	20.0	2	3	0	mc
3-6	West Dickson Street	North Arkansas Avenue	Highland Avenue	Fayetteville	0.5	3	1.9	2	1.8	2	174.2	2	3	0	b
3-7	Butterfield Coach Road	East Don Tyson Parkway	East Emma Avenue	Springdale	2.3	3	1.9	2	3.0	2	91.7	2	3	0	mc, mv
3-8	Cheri Whitlock Drive	North Lincoln Street	West of North Carl Street	Siloam Springs	1.6	3	1.9	2	3.1	2	65.6	2	3	0	mv
3-9	Progress Avenue	North of Carousel Drive	North of Ravenwood Boulevard	Siloam Springs	1.3	3	1.9	2	0.8	2	74.5	2	3	0	mv
3-10	East Robinson Avenue	Turner Street	East of Sonora Acres Road	Springdale	5.4	3	1.9	2	3.3	2	133.1	2	3	0	b, mc, mv, p
3-11	South Old Missouri Road	East Robinson Avenue	East Emma Avenue	Springdale	1.2	3	1.9	2	4.0	2	148.0	2	3	0	mc, mv
3-12	AR 16	MP 0.25	MP 13.30	Fayetteville	0.2	3	1.9	1	0.0	2	56.0	2	3	2	p
3-13	Ramp	MP 0.20	MP 0.30	Springdale	0.3	3	1.9	1	0.0	2	117.5	2	3	2	mv
3-14	Electric Avenue	East of Woodford Street	South Old Missouri Road	Springdale	1.1	3	1.9	2	1.8	2	31.8	2	3	0	mv
3-15	North Dixieland Road	West Walnut Street	North of West Easy Street	Rogers	1.1	3	1.85	1	0.0	2	106.4	3	3	0	mv
3-16	West Poplar Street	North Leverett Avenue	North Gregg Avenue	Fayetteville	0.5	3	1.85	1	0.0	2	39.6	3	3	0	b
3-17	North Salem Road	North of West Fairfax Street	West Persimmon Street	Fayetteville	1.3	3	1.65	2	0.8	2	30.4	1	3	0	p
3-18	Rock Road	MP 1.50	MP 0.40		1.2	3	1.65	2	1.7	2	5.0	1	3	0	mc
3-19	US 62	MP 26.10	MP 35.85		1.9	3	1.65	2	4.1	2	14.4	1	3	0	mc
3-20	US 62	Orchid Road	MP 31.70	Farmington, Prairie Grove	3.3	3	1.65	2	4.0	2	31.4	1	3	0	mv
3-21	Greenhouse Road	East Centerton Boulevard	Southwest Regional Airport Boulevard	Bentonville, Centerton	1.5	3	1.65	2	2.0	2	59.1	1	3	0	mv
3-22	AR 16	West of Osgood Lane	MP 12.25		1.2	3	1.65	2	4.2	2	20.0	1	3	0	mv
3-23	Bellview Street	West Monroe Avenue	North of Willowbend Drive	Lowell	0.8	3	1.65	2	2.7	2	15.9	1	3	0	mv
3-24	I 49	MP 79.50	MP 86.60		1.4	3	1.65	2	4.3	2	120.7	1	3	0	mv
3-25	East Wagon Wheel Road	South of South Zion Road	Puppy Creek Road	Springdale	1.0	3	1.65	2	2.1	2	43.2	1	3	0	mv
3-26	North Main Street Elm Springs	South of Springdale Northern Bypass	Wagon Wheel Road	Springdale	0.9	3	1.65	2	3.3	2	42.7	1	3	0	mv
3-27	North Thompson Road	West County Line Road	South of West Apple Blossom Avenue	Springdale	2.0	3	1.65	2	1.5	2	110.5	1	3	0	mc, mv
3-28	North Shiloh Drive	West Dorothy Jeanne Street	West Wedington Drive	Fayetteville	0.3	3	1.65	1	0.0	2	19.0	1	3	2	mv

ID	Corridor	From Extent	To Extent	Municipality	Length (mi)	Project Tier	Total Score	KSI Score	KSI Crashes/Mile	All Crash Score	All Crashes/Mile	Equity Score	HIN Score	Public Comment Score	HIN Modes
3-29	Bella Vista Way	MP 4.65	MP 2.35	Bella Vista	2.2	3	1.65	2	1.8	2	106.8	1	3	0	mc, mv
3-30	Spring Creek Road	South of Springdale Northern Bypass	West Monroe Avenue	Lowell, Springdale	1.1	3	1.65	2	0.9	2	4.5	1	3	0	mv
3-31	AR 12	MP 19.70	Van Winkle Place Road		2.1	3	1.65	2	4.3	2	29.0	1	3	0	mc
3-32	I 49	MP 85.60	MP 52.05	Greenland	2.1	3	1.65	2	2.9	2	80.5	1	3	0	mv
3-33	South 26th Street	North of Everest Avenue	West Pleasant Grove Road	Rogers	1.1	3	1.65	2	2.7	2	27.4	1	3	0	mv
3-34	US 71	South of Jenny Lynn Lane	South of Pine Drive	Winslow	1.3	3	1.65	2	0.8	2	9.2	1	3	0	mc
3-35	I 49;US 62;US 71	MP 169.30	MP 114.75	Lowell, Rogers, Springdale	9.8	3	1.65	2	2.9	2	119.9	1	3	0	mc, mv
3-36	Bella Vista Bypass	MP 18.90	MP 13.70	Gravette	2.0	3	1.65	2	4.0	2	83.5	1	3	0	mv, p
3-37	North Shiloh Drive	MP 1.80	West Wedington Drive	Fayetteville	1.1	3	1.65	1	0.0	2	23.6	1	3	2	mv
3-38	State Highway 72	North of East Plentywood Road	MP 1.30	Bentonville	2.7	3	1.65	2	3.7	2	48.1	1	3	0	mv
3-39	West State Highway 72	Main Street	Southwest Black Hawk Road	Bentonville, Centerton	1.9	3	1.65	2	1.6	2	33.9	1	3	0	mc
3-40	East Cliffs Boulevard	North Happy Hollow Road	North Crossover Road	Fayetteville	0.5	3	1.6	1	0.0	2	7.5	2	3	0	mv
3-41	Christian Avenue	North Thompson Street	Elmdale Drive	Springdale	0.7	3	1.6	1	0.0	2	16.6	2	3	0	p
3-42	East Kenwood Road	South Excelsior Drive	West of South Hico Street	Siloam Springs	1.4	3	1.6	1	0.0	2	22.9	2	3	0	mv



Note: Maps based on Arkansas DOT ACAT data and Missouri DOT STARS data for all recorded crashes between 2017-2021.

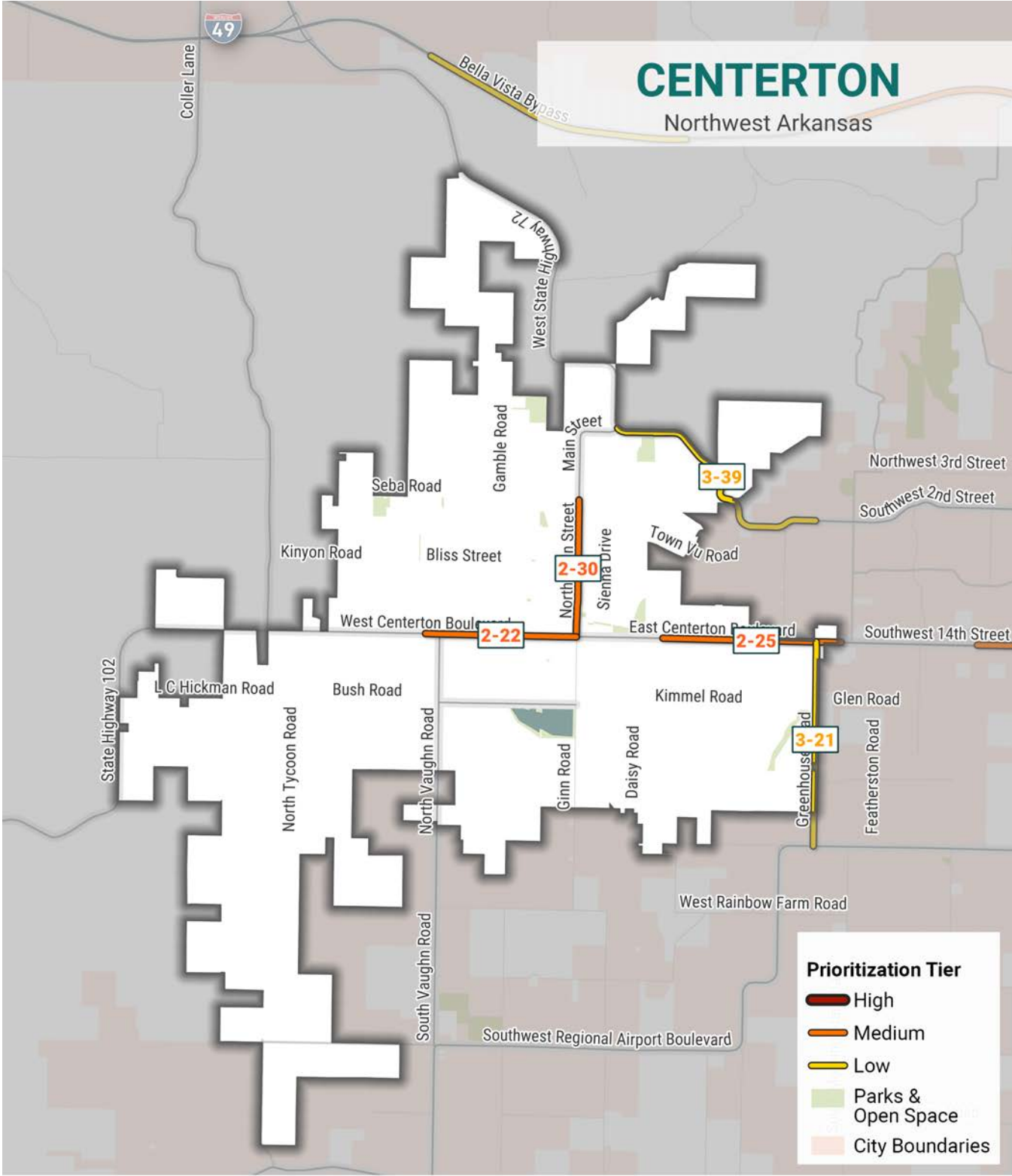


Table 5: Bella Vista HIN

ID	Corridor	From Extent	To Extent	Municipality	Length (mi)	Project Tier	Total Score	KSI Score	KSI Density	All Crash Score	All Density	Equity Score	HIN Score	Public Score	HIN Modes
2-15	Bella Vista Bypass	MP 21.95	MP 0.40	Bella Vista, Bentonville	1.9	2	1.95	2	4.2	2	87.9	1	3	2	mv, p
3-29	Bella Vista Way	MP 4.65	MP 2.35	Bella Vista	2.2	3	1.65	2	1.8	2	106.8	1	3	0	mc, mv

Table 6: Bentonville HIN

ID	Corridor	From Extent	To Extent	Municipality	Length (mi)	Project T1er	Total Score	KSI Score	KSI Density	All Crash Score	All Density	Equity Score	HIN Score	Public Score	HIN Modes
1-5	Southwest 14th Street	Water Tower Road/Bekaert Drive	West of Phyllis Street	Bentonville, Rogers	0.6	1	2.6	3	6.4	3	1002.3	2	3	2	mv
1-23	Southwest 14th Street	Southwest E Street	West of Phyllis Street	Bentonville	1.3	1	2.3	2	3.1	3	495.0	2	3	2	mv
2-11	Southwest Walton Boulevard	West extent of Southeast Walton Boulevard	East of Moberly Lane	Bentonville	1.3	2	2.05	2	2.3	3	544.9	1	3	2	mc, mv
2-13	Southwest 14th Street	South Main Street	MP 5.05	Bentonville	1.3	2	2.05	2	4.6	3	261.5	1	3	2	mv, p
2-15	Bella Vista Bypass	MP 21.95	MP 0.40	Bella Vista, Bentonville	1.9	2	1.95	2	4.2	2	87.9	1	3	2	mv, p
2-25	East Centerton Boulevard	MP 1.25	MP 2.40	Bentonville, Centerton	1.3	2	1.95	2	3.1	2	223.1	1	3	2	mc, mv
3-21	Greenhouse Road	East Centerton Boulevard	Southwest Regional Airport Boulevard	Bentonville, Centerton	1.5	3	1.65	2	2.0	2	59.1	1	3	0	mv
3-38	State Highway 72	North of East Plentywood Road	MP 1.30	Bentonville	2.7	3	1.65	2	3.7	2	48.1	1	3	0	mv
3-39	West State Highway 72	Main Street	Southwest Black Hawk Road	Bentonville, Centerton	1.9	3	1.65	2	1.6	2	33.9	1	3	0	mc

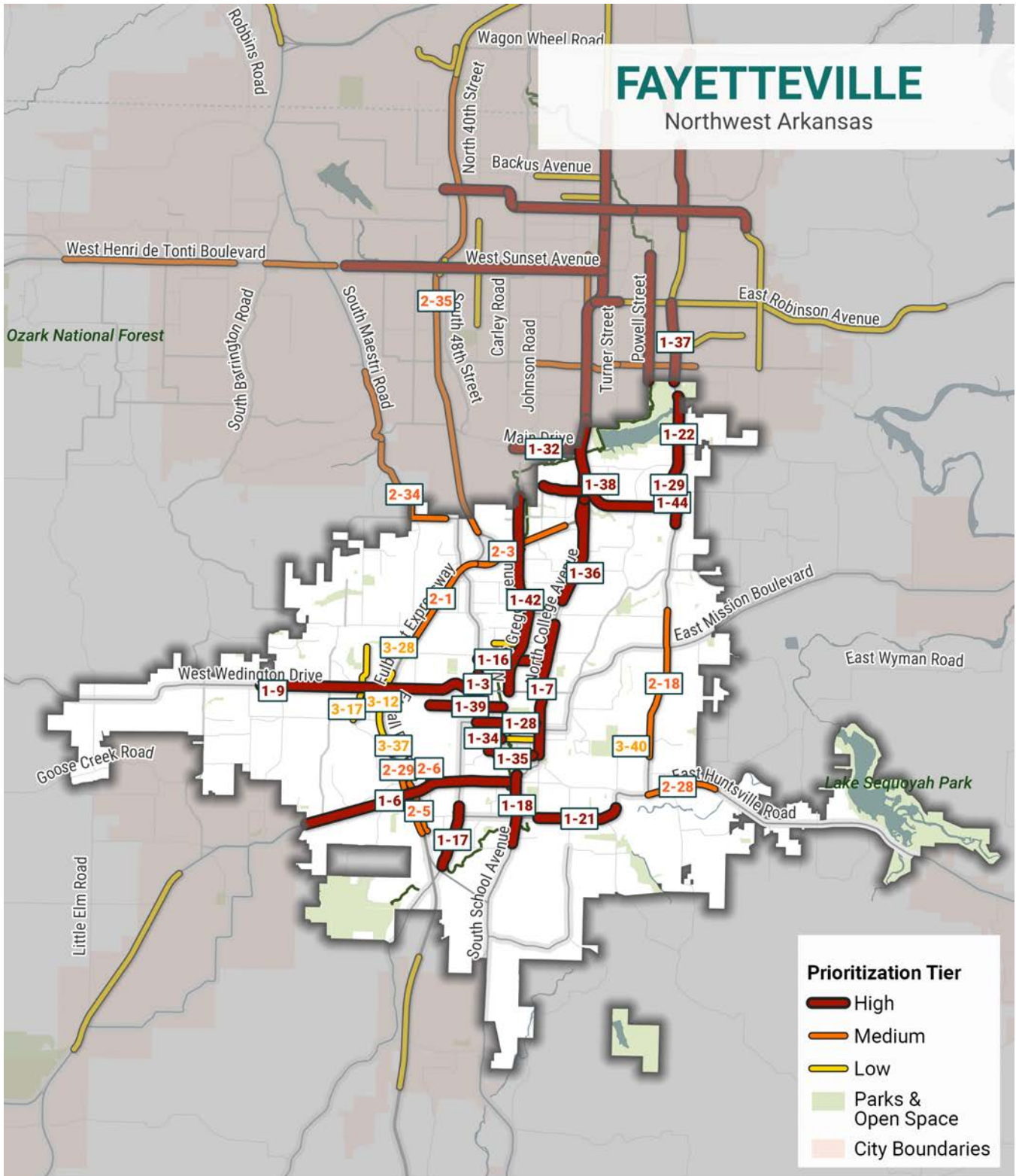


Note: Maps based on Arkansas DOT ACAT data and Missouri DOT STARS data for all recorded crashes between 2017-2021.



Table 7: Centerton HIN

ID	Corridor	From Extent	To Extent	Municipality	Length (mi)	Project Tier	Total Score	KSI Score	KSI Density	All Crash Score	All Density	Equity Score	HIN Score	Public Score	HIN Modes
2-22	West Centerton Boulevard	North Main Street	East of Western Heights Circle	Centerton	1.1	2	1.95	2	1.8	2	118.2	1	3	2	mv
2-25	East Centerton Boulevard	MP 1.25	MP 2.40	Bentonville, Centerton	1.3	2	1.95	2	3.1	2	223.1	1	3	2	mc, mv
2-30	North Main Street	Town Vu Road	West Centerton Boulevard	Centerton	1.0	2	1.95	2	4.0	2	98.1	1	3	2	p
3-21	Greenhouse Road	East Centerton Boulevard	Southwest Regional Airport Boulevard	Bentonville, Centerton	1.5	3	1.65	2	2.0	2	59.1	1	3	0	mv
3-39	West State Highway 72	Main Street	Southwest Black Hawk Road	Bentonville, Centerton	1.9	3	1.65	2	1.6	2	33.9	1	3	0	mc



Note: Maps based on Arkansas DOT ACAT data and Missouri DOT STARS data for all recorded crashes between 2017-2021.

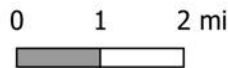
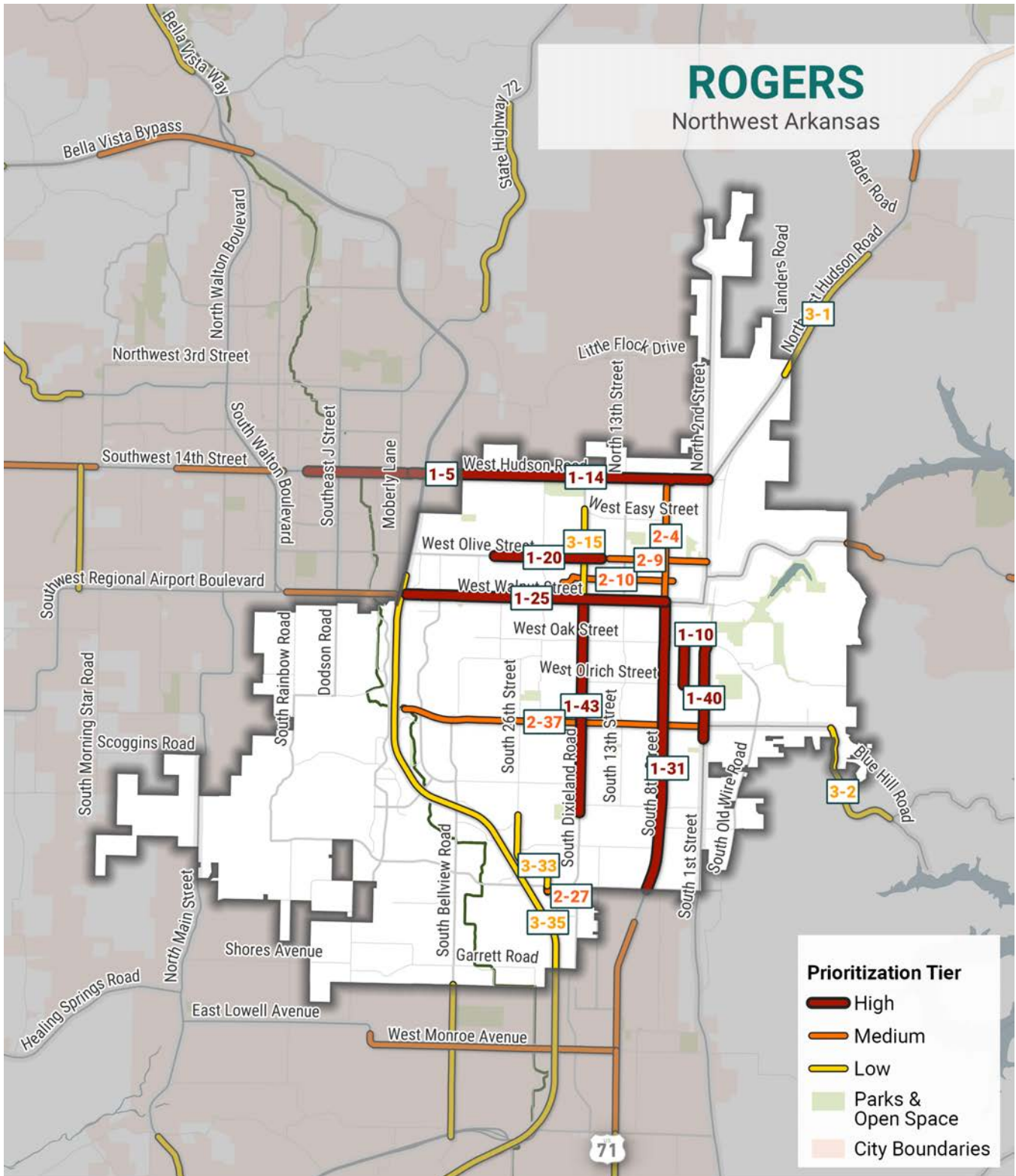


Table 8: Fayetteville HIN

ID	Corridor	From Extent	To Extent	Municipality	Length (mi)	Project Tier	Total Score	KSI Score	KSI Density	All Crash Score	All Density	Equity Score	HIN Score	Public Score	HIN Modes
1-3	North Garland Avenue	North of West Berry Street	South of West Lawson Street	Fayetteville	0.4	1	2.75	3	5.0	2	153.8	3	3	2	b
1-6	West Martin Luther King Jr. Boulevard	West Ozark Trail	South School Avenue	Fayetteville	3.5	1	2.6	3	7.8	3	439.3	2	3	2	b, mc, mv, p
1-7	North College Avenue	South of East Township Street	East Center Street	Fayetteville	2.1	1	2.6	3	5.2	3	372.9	2	3	2	mv, p
1-9	West Wedington Drive	MP 16.40	North Garland Avenue	Fayetteville	3.5	1	2.5	3	6.6	2	245.1	2	3	2	b, mc, mv, p
1-16	West Sycamore Street	North Woodland Avenue	North Garland Avenue	Fayetteville	0.9	1	2.45	2	1.1	2	90.9	3	3	2	mv
1-17	South Razorback Road	South of South Treat Street/Dowell Drive	Baum Drive	Fayetteville	1.0	1	2.45	2	1.0	2	29.9	3	3	2	b
1-18	South School Avenue	West Nonnamaker Drive	South Archibald Yell Boulevard	Fayetteville	1.1	1	2.45	2	0.9	2	54.5	3	3	2	mv
1-21	East 15th Street	South College Avenue	North of South Happy Hollow Road	Fayetteville	1.3	1	2.45	2	1.5	2	90.6	3	3	2	mv
1-22	North Crossover Road	MP 9.80	South of Hillside Terrace	Fayetteville, Springdale	1.2	1	2.35	3	8.3	3	363.3	1	3	2	mc, mv
1-28	West Maple Street	North Garland Avenue	North Highland Avenue	Fayetteville	0.9	1	2.2	2	1.1	2	91.9	2	3	2	p
1-29	North Crossover Road	MP 7.15	North of Brandon Circl	Fayetteville, Springdale	2.1	1	2.2	2	4.8	2	207.6	2	3	2	mc, mv
1-32	Main Drive	East of Ball Street	North College Avenue/South Thompson Street	Fayetteville, Johnson, Springdale	1.1	1	2.2	2	1.9	2	66.1	2	3	2	mv

ID	Corridor	From Extent	To Extent	Municipality	Length (mi)	Project Tier	Total Score	KSI Score	KSI Density	All Crash Score	All Density	Equity Score	HIN Score	Public Score	HIN Modes
1-34	West Dickson Street	North Arkansas Avenue	Garland Avenue	Fayetteville	0.4	1	2.2	2	2.6	2	36.0	2	3	2	b
1-35	West Center Street	South East Avenue	North Harmon Avenue	Fayetteville	0.7	1	2.2	2	1.4	2	69.1	2	3	2	p
1-36	North College Avenue	North of East Sunbridge Drive	Churchill Avenue/West Lakeview Drive	Fayetteville, Springdale	4.7	1	2.2	2	2.3	2	164.9	2	3	2	mv, p
1-37	South Old Missouri Road	East Robinson Avenue	Ivey Lane	Fayetteville, Springdale	1.3	1	2.2	3	6.4	2	151.9	2	3	0	mc, mv, p
1-38	N Exit 3900	South extent of North Exit 3900	North extent of North Exit 3900	Fayetteville	0.1	1	2.2	3	13.6	2	74.6	2	3	0	p
1-39	West Cleveland Street	West of North Willis Avenue	North Sang Avenue	Fayetteville	1.2	1	2.2	2	3.5	2	51.2	2	3	2	p
1-42	North Gregg Avenue	North of West Van Asche Drive	West North Street	Fayetteville	3.2	1	2.2	2	2.5	2	108.8	2	3	2	b, mv, p
1-44	East Joyce Boulevard	North Crossover Road	North Steele Boulevard	Fayetteville	2.2	1	2.2	2	2.7	2	220.7	2	3	2	mv
2-1	Fulbright Expressway	MP 123.20	I 49;US 62;US 71	Fayetteville	1.8	2	2.15	2	3.4	2	171.7	3	3	0	mc, mv
2-3	Fulbright Expressway	MP 2.50	I 49;US 62;US 71	Fayetteville	1.6	2	2.15	2	2.5	2	56.2	3	3	0	mc
2-5	South Futrall Drive	West Old Farmington Road	West of Custer Lane	Fayetteville	0.8	2	2.15	2	1.2	2	45.9	3	3	0	mv
2-6	South Sang Avenue	West Stone Street	West Martin Luther King Jr. Boulevard	Fayetteville	0.3	2	2.15	2	3.7	2	77.4	3	3	0	b
2-18	North Crossover Road	South of Deerpath Drive	South of East Shagbark Bend	Fayetteville	2.4	2	1.95	2	4.2	2	182.9	1	3	2	mc, mv

ID	Corridor	From Extent	To Extent	Municipality	Length (mi)	Project Tier	Total Score	KSI Score	KSI Density	All Crash Score	All Density	Equity Score	HIN Score	Public Score	HIN Modes
2-28	East Huntsville Road	South Crossover Road	West of Jarnigan Street	Fayetteville	1.1	2	1.95	2	0.9	2	90.9	1	3	2	mv
2-29	South Shiloh Drive	North extent of South Shiloh Drive	MP 1.15	Fayetteville	1.1	2	1.95	2	1.8	2	148.2	1	3	2	mv
2-34	AR 112	MP 6.05	East of North Cris Hollow Road	Fayetteville, Johnson	1.9	2	1.95	2	1.6	2	33.2	1	3	2	mc
2-35	I 49; US 62; US 71	MP 114.75	MP 90.65	Fayetteville, Johnson, Springdale	7.6	2	1.95	2	3.3	2	111.8	1	3	2	mv, p
3-6	West Dickson Street	North Arkansas Avenue	Highland Avenue	Fayetteville	0.5	3	1.9	2	1.8	2	174.2	2	3	0	b
3-12	AR 16	MP 0.25	MP 13.30	Fayetteville	0.2	3	1.9	1	0.0	2	56.0	2	3	2	p
3-16	West Poplar Street	North Leverett Avenue	North Gregg Avenue	Fayetteville	0.5	3	1.85	1	0.0	2	39.6	3	3	0	b
3-17	North Salem Road	North of West Fairfax Street	West Persimmon Street	Fayetteville	1.3	3	1.65	2	0.8	2	30.4	1	3	0	p
3-28	North Shiloh Drive	West Dorothy Jeanne Street	West Wedington Drive	Fayetteville	0.3	3	1.65	1	0.0	2	19.0	1	3	2	mv
3-37	North Shiloh Drive	MP 1.80	West Wedington Drive	Fayetteville	1.1	3	1.65	1	0.0	2	23.6	1	3	2	mv
3-40	East Cliffs Boulevard	North Happy Hollow Road	North Crossover Road	Fayetteville	0.5	3	1.6	1	0.0	2	7.5	2	3	0	mv



Note: Maps based on Arkansas DOT ACAT data and Missouri DOT STARS data for all recorded crashes between 2017-2021.

Table 9: Rogers HIN

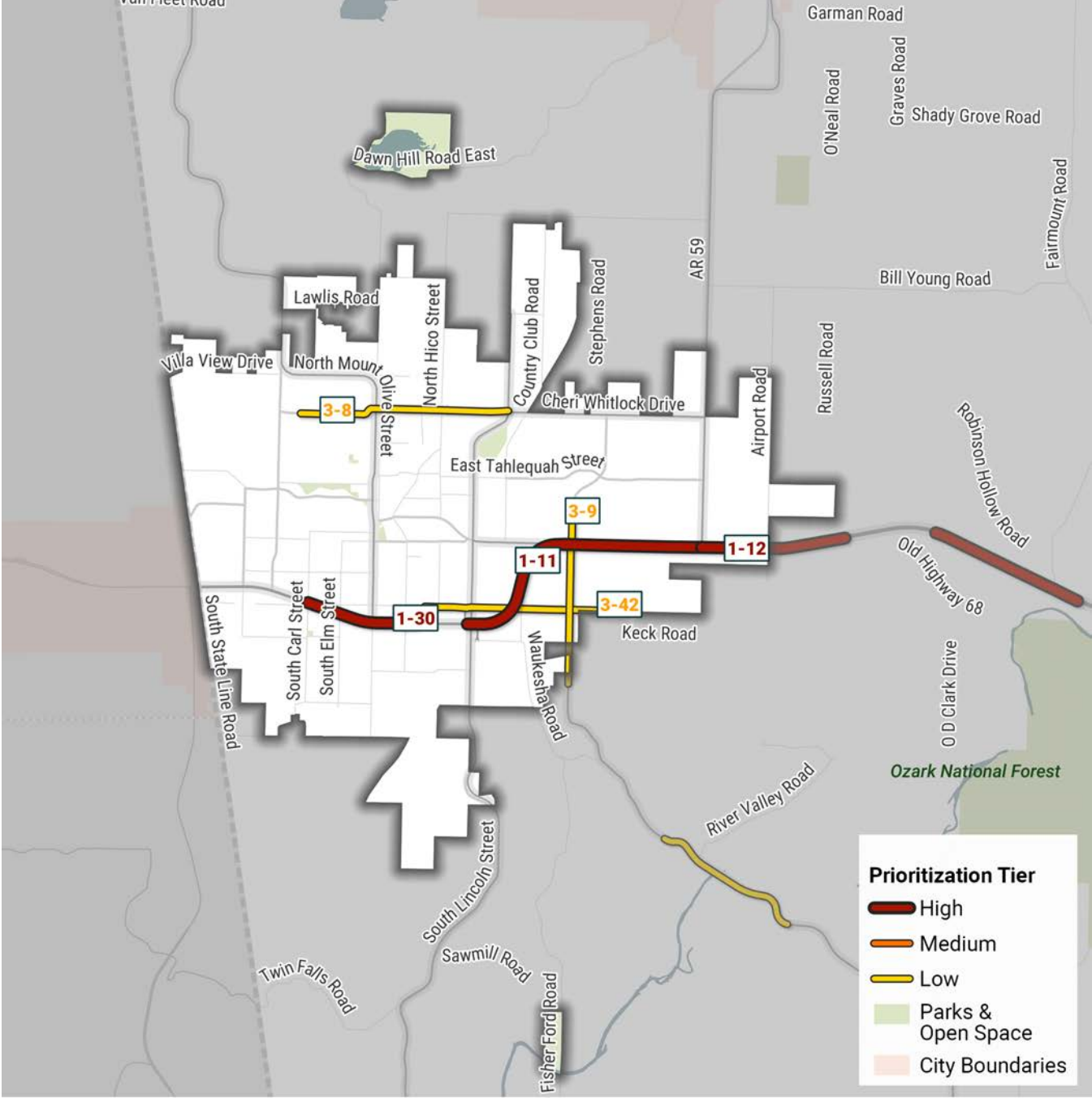
ID	Corridor	From Extent	To Extent	Municipality	Length (mi)	Project Tier	Total Score	KSI Score	KSI Density	All Crash Score	All Density	Equity Score	HIN Score	Public Score	HIN Modes
1-5	Southeast 14th Street	Water Tower Road/Bekaert Drive	West of Phyllis Street	Bentonville, Rogers	0.6	1	2.6	3	6.4	3	1002.3	2	3	2	mv
1-10	South 5th Street	West Olrich Street	West Oak Street	Rogers	0.5	1	2.5	3	6.0	2	11.9	2	3	2	p
1-14	West Hudson Road	Water Tower Road/Bekaert Drive	North 2nd Street	Rogers	3.0	1	2.45	2	3.3	2	168.7	3	3	2	mc, mv
1-20	West Olive Street	East of North 16th Street	Kingswood Drive	Rogers	1.3	1	2.45	2	0.8	2	89.2	3	3	2	mv, p
1-25	West Walnut Street	South 8th Street/North 8th Street	East of US 71	Rogers	3.2	1	2.3	2	4.4	3	309.3	2	3	2	b, mc, mv, p
1-31	South 8th Street	West Walnut Street	East Pleasant Grove Road	Rogers	3.5	1	2.2	2	4.3	2	153.3	2	3	2	mv, p
1-40	South 1st Street	East Glendale Lane	West Oak Street	Rogers	1.2	1	2.2	2	0.9	2	63.8	2	3	2	mc
1-43	South Dixieland Road	Cunningham Avenue	West Walnut Street	Rogers	2.6	1	2.2	2	3.5	2	75.4	2	3	2	mv, p
2-4	North 8th Street	West Walnut Street	West Hudson Road	Rogers	1.5	2	2.15	2	4.0	2	156.5	3	3	0	mc, mv
2-9	West Olive Street	West of North 14th Place	North 2nd Street	Rogers	1.2	2	2.15	2	0.8	2	97.8	3	3	0	mv, p
2-10	West Persimmon Street	East of North 7th Street	North 22nd Street	Rogers	1.4	2	2.15	2	1.4	2	20.3	3	3	0	p
2-14	Pleasant Crossing Boulevard	South of Pleasant Crossing Boulevard	West Pleasant Grove Road	Rogers	0.1	2	2.05	3	14.0	3	322.8	1	3	0	mv
2-27	Pleasant Crossing Drive	Pleasant Crossing Boulevard	South Dixieland Road	Rogers	0.3	2	1.95	3	6.5	2	71.5	1	3	0	b
2-37	West New Hope Road	South 1st Street	East of I-49	Rogers	3.7	2	1.95	2	2.5	2	95.9	1	3	2	mv, p

ID	Corridor	From Extent	To Extent	Municipality	Length (mi)	Project Tier	Total Score	KSI Score	KSI Density	All Crash Score	All Density	Equity Score	HIN Score	Public Score	HIN Modes
3-1	Northeast Hudson Road	North of Happy Trails Drive	MP 10.60	Avoca, Rogers	1.8	3	1.9	2	2.2	2	23.9	2	3	0	mc
3-2	Monte Northeast Road	East New Hope Road	AR 94	Rogers	1.6	3	1.9	2	3.7	2	26.3	2	3	0	mv
3-15	North Dixieland Road	West Walnut Street	North of West Easy Street	Rogers	1.1	3	1.85	1	0.0	2	106.4	3	3	0	mv
3-33	South 26th Street	North of Everest Avenue	West Pleasant Grove Road	Rogers	1.1	3	1.65	2	2.7	2	27.4	1	3	0	mv
3-35	I 49; US 62; US 71	MP 169.30	MP 114.75	Lowell, Rogers, Springdale	9.8	3	1.65	2	2.9	2	119.9	1	3	0	mc, mv

THIS PAGE INTENTIONALLY LEFT BLANK

SILOAM SPRINGS

Northwest Arkansas



Note: Maps based on Arkansas DOT ACAT data and Missouri DOT STARS data for all recorded crashes between 2017-2021.

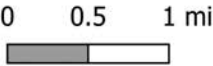
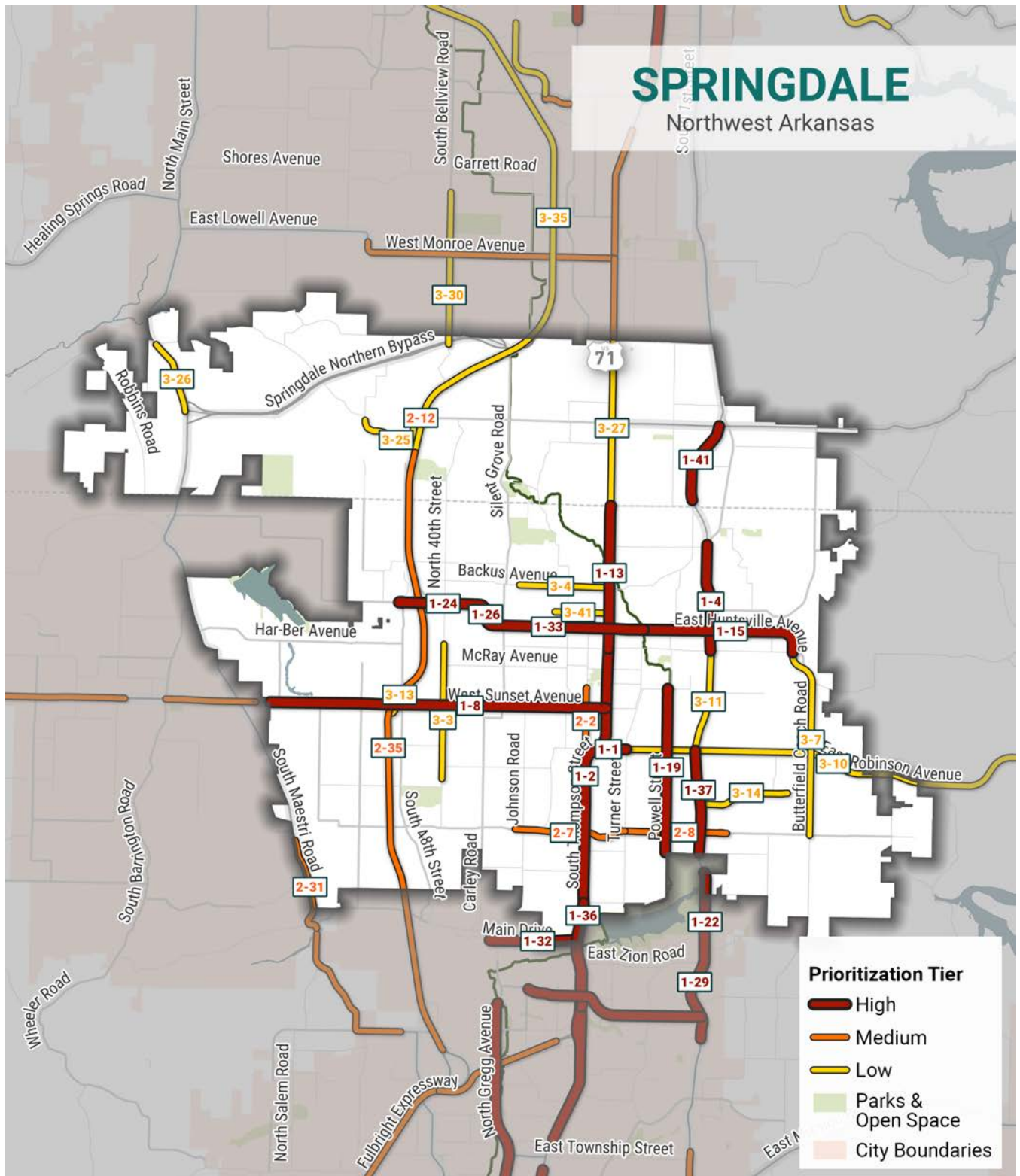


Table 10: Siloam Springs HIN

ID	Corridor	From Extent	To Extent	Municipality	Length (mi)	Project Tier	Total Score	KSI Score	KSI Density	All Crash Score	All Density	Equity Score	HIN Score	Public Score	HIN Modes
1-11	US 412;AR 59	AR 59	West of AR 59	Siloam Springs	2.1	1	2.5	3	5.6	2	202.0	2	3	2	mv
1-12	US 412	AR 59	MP 11.65	Siloam Springs	1.1	1	2.5	3	8.2	2	178.2	2	3	2	mc, mv
1-30	US 412	South Carl Street	East of South Washington Street	Siloam Springs	0.9	1	2.2	3	10.5	2	228.9	2	3	0	mc, mv
3-8	Cheri Whitlock Drive	North Lincoln Street	West of North Carl Street	Siloam Springs	1.6	3	1.9	2	3.1	2	65.6	2	3	0	mv
3-9	Progress Avenue	North of Carousel Drive	North of Ravenwood Boulevard	Siloam Springs	1.3	3	1.9	2	0.8	2	74.5	2	3	0	mv
3-42	East Kenwood Road	South Excelsior Drive	West of South Hico Street	Siloam Springs	1.4	3	1.6	1	0.0	2	22.9	2	3	0	mv



Note: Maps based on Arkansas DOT ACAT data and Missouri DOT STARS data for all recorded crashes between 2017-2021.



Table 11: Springdale HIN

ID	Corridor	From Extent	To Extent	Municipality	Length (mi)	Project Tier	Total Score	KSI Score	KSI Density	All Crash Score	All Density	Equity Score	HIN Score	Public Score	HIN Modes
1-1	West Robinson Avenue	Turner Street	South Thompson Street	Springdale	0.4	1	2.85	3	5.4	3	412.8	3	3	2	mv
1-2	South Thompson Street	West Lakeview Drive	West Emma Avenue	Springdale	3.2	1	2.85	3	8.8	3	311.9	3	3	2	mc, mv, p
1-4	North Old Missouri Road	East Emma Avenue	South of East Randall Wobbe Lane	Springdale	1.3	1	2.75	3	5.4	2	131.5	3	3	2	mv, p
1-8	West Sunset Avenue	South Thompson Street	Westside Village Street	Springdale	4.1	1	2.6	3	8.8	3	438.1	2	3	2	mc, mv, p
1-13	North Thompson Street	West Emma Avenue	West County Line Road	Springdale	1.7	1	2.45	3	5.2	2	225.2	3	3	0	mv, p
1-15	East Huntsville Avenue	Mill Street	East Emma Avenue	Springdale	2.0	1	2.45	2	4.5	2	97.7	3	3	2	mv, p
1-19	Powell Street	South of Southland Drive	Caudle Avenue	Springdale	2.0	1	2.45	2	2.0	2	32.2	3	3	2	b, p
1-22	North Crossover Road	MP 9.80	South of Hillside Terrace	Fayetteville, Springdale	1.2	1	2.35	3	8.3	3	363.3	1	3	2	mc, mv
1-24	Elm Springs Road	White Road	West of North 48th Street	Springdale	1.1	1	2.3	2	0.9	3	333.1	2	3	2	mc, mv
1-26	White Road	West Huntsville Avenue	Elm Springs Road	Springdale	0.2	1	2.2	2	4.2	2	97.7	2	3	2	mv
1-29	North Crossover Road	MP 7.15	North of Brandon Circl	Fayetteville, Springdale	2.1	1	2.2	2	4.8	2	207.6	2	3	2	mc, mv
1-32	Main Drive	East of Ball Street	North College Avenue/South Thompson Street	Fayetteville, Johnson, Springdale	1.1	1	2.2	2	1.9	2	66.1	2	3	2	mv

ID	Corridor	From Extent	To Extent	Municipality	Length (mi)	Project Tier	Total Score	KSI Score	KSI Density	All Crash Score	All Density	Equity Score	HIN Score	Public Score	HIN Modes
1-33	West Huntsville Avenue	Mill Street	White Road	Springdale	1.9	1	2.2	2	1.6	2	161.0	2	3	2	mv
1-36	North College Avenue	North of East Sunbridge Drive	Churchill Avenue/West Lakeview Drive	Fayetteville, Springdale	4.7	1	2.2	2	2.3	2	164.9	2	3	2	mv, p
1-37	South Old Missouri Road	East Robinson Avenue	Ivey Lane	Fayetteville, Springdale	1.3	1	2.2	3	6.4	2	151.9	2	3	0	mc, mv, p
1-41	Dick Trammel Highway	AR 264	Remington Drive	Springdale	1.0	1	2.2	3	4.9	2	61.2	2	3	0	mc
2-2	South Pleasant Street	South Thompson Street	Watson Avenue	Springdale	0.9	2	2.15	2	2.2	2	148.2	3	3	0	mv
2-7	West Don Tyson Parkway	West of Johnson Road	Turner Street	Springdale	1.6	2	2.15	2	0.6	2	105.8	3	3	0	mv
2-8	East Don Tyson Parkway	Turner Street	East of Old Missouri Road	Springdale	1.3	2	2.15	2	0.8	2	68.9	3	3	0	mv
2-12	East Wagon Wheel Road	Puppy Creek Road	I-40;US 71	Springdale	0.1	2	2.05	3	8.4	3	395.2	1	3	0	mv
2-31	South Maestri Road	Western Trails Drive	South of Greathouse Springs	Springdale, Tontitown	1.2	2	1.95	2	2.5	2	35.8	1	3	2	mc
2-35	I 49;US 62;US 71	MP 114.75	MP 90.65	Fayetteville, Johnson, Springdale	7.6	2	1.95	2	3.3	2	111.8	1	3	2	mv, p
3-3	South 40th Street	North of Haile Lane	North of Holt Avenue	Springdale	1.6	3	1.9	2	1.2	2	75.6	2	3	0	mv
3-4	Backus Avenue	East of San Miguel Drive	North Thompson Street	Springdale	1.1	3	1.9	2	1.8	2	87.3	2	3	0	p
3-7	Butterfield Coach Road	East Don Tyson Parkway	East Emma Avenue	Springdale	2.3	3	1.9	2	3.0	2	91.7	2	3	0	mc, mv

ID	Corridor	From Extent	To Extent	Municipality	Length (mi)	Project Tier	Total Score	KSI Score	KSI Density	All Crash Score	All Density	Equity Score	HIN Score	Public Score	HIN Modes
3-10	East Robinson Avenue	Turner Street	East of Sonora Acres Road	Springdale	5.4	3	1.9	2	3.3	2	133.1	2	3	0	b, mc, mv, p
3-11	South Old Missouri Road	East Robinson Avenue	East Emma Avenue	Springdale	1.2	3	1.9	2	4.0	2	148.0	2	3	0	mc, mv
3-13	Ramp	MP 0.20	MP 0.30	Springdale	0.3	3	1.9	1	0.0	2	117.5	2	3	2	mv
3-14	Electric Avenue	East of Woodford Street	South Old Missouri Road	Springdale	1.1	3	1.9	2	1.8	2	31.8	2	3	0	mv
3-25	East Wagon Wheel Road	South of South Zion Road	Puppy Creek Road	Springdale	1.0	3	1.65	2	2.1	2	43.2	1	3	0	mv
3-26	North Main Street Elm Springs	South of Springdale Northern Bypass	Wagon Wheel Road	Springdale	0.9	3	1.65	2	3.3	2	42.7	1	3	0	mv
3-27	North Thompson Road	West County Line Road	South of West Apple Blossom Avenue	Springdale	2.0	3	1.65	2	1.5	2	110.5	1	3	0	mc, mv
3-30	Spring Creek Road	South of Springdale Northern Bypass	West Monroe Avenue	Lowell, Springdale	1.1	3	1.65	2	0.9	2	4.5	1	3	0	mv
3-35	I 49; US 62; US 71	MP 169.30	MP 114.75	Lowell, Rogers, Springdale	9.8	3	1.65	2	2.9	2	119.9	1	3	0	mc, mv
3-41	Christian Avenue	North Thompson Street	Elmdale Drive	Springdale	0.7	3	1.6	1	0.0	2	16.6	2	3	0	p



Safety Action Plan