



Prince Avenue  
Pilot Project Feedback

Survey at  
[accgov.com/prince](https://accgov.com/prince)  
through gov. 2

Questions?  
706-613-3025

SPLOST  
The State Planning and  
Local Operations Support  
Team



# Regional Working Group Meeting #1

December 15, 2022

# Introductions

---



# The Safe Systems Principles

---



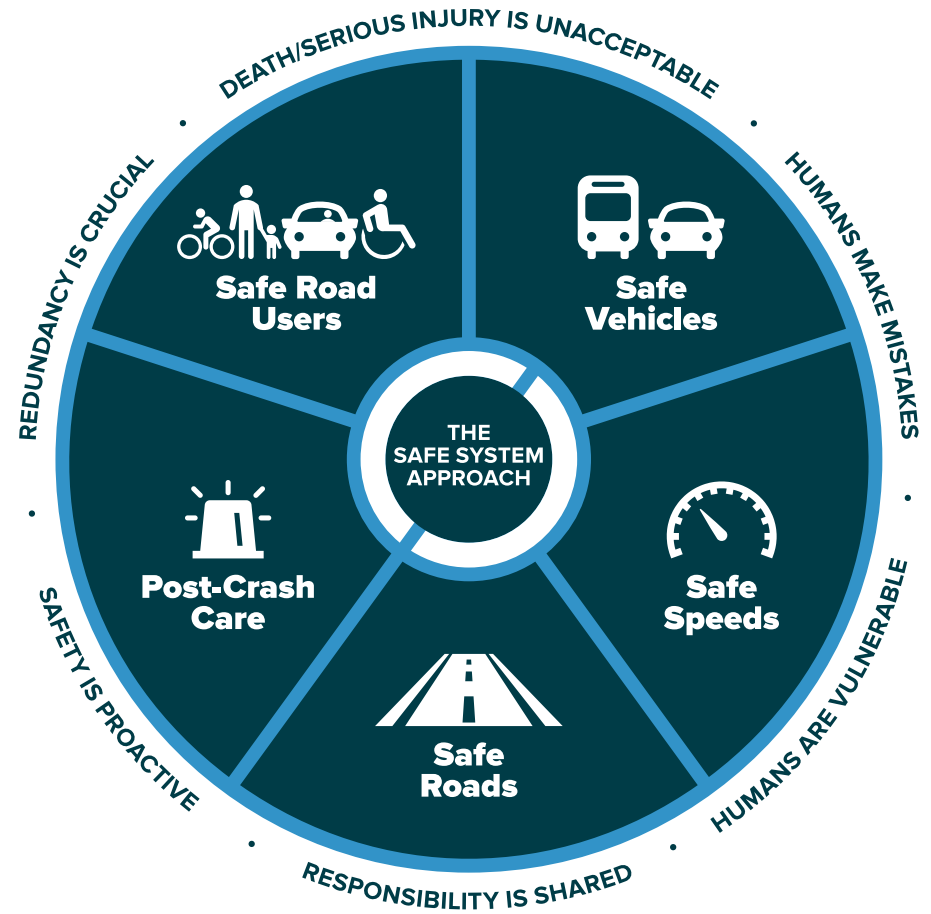
# Safety Vocabulary

---

- ***Crashes*** not accidents
- ***KSI*** – Killed or Serious Injury Crashes
- ***Proven Safety Countermeasure*** - an action designed to reduce KSI crashes
- ***Systemic Safety*** – applying changes to a system based on risk and not just history

# The Safe System Approach

- Aims to eliminate fatal and serious injuries for all road users by:
  - accommodating human mistakes
  - keeping impacts on the human body at tolerable levels



# Principles

---



---

Death/serious injury  
is unacceptable



---

Humans make  
mistakes



---

Humans are  
vulnerable



---

Responsibility is  
shared



---

Safety is proactive



---

Redundancy  
is crucial

# Elements

---



---

Safe road users



---

Safe vehicles



---

Safe speeds



---

Safe roads



---

Post-crash care





# Safety Focus Areas

---

- Speed Management
- Pedestrian/Bicyclist
- Roadway Departure
- Intersections
- Crosscutting



# Proven Safety Countermeasures

- **Speed Management**

- Appropriate Speed Limits
- Speed Cameras

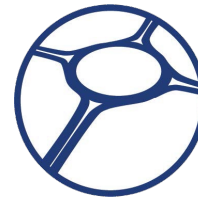
- **Pedestrian/Bicyclist**

- Refuges
- Bike Lanes

- **Roadway Departure**

- **Intersections**

- **Crosscutting**



# Proven Safety Countermeasures

- Speed Management
- Pedestrian/Bicyclist
- Roadway Departure
  - Enhanced Delineation
  - Design Changes at Curves
- Intersections
  - Access Management
  - Reduce Left Turn Conflicts
  - Roundabouts
- Crosscutting
  - Lighting
  - Pavement Friction Management



# Breakout Discussion

---



**Have you ever been in a crash?**

# Questions for Discussion

---

1. How do you learn about road safety issues in your community?
2. What are the specific locations in your community that have been identified as having crashes/near crashes that safety countermeasures can be implemented?
3. How would you describe your community's approach to increasing road safety?
4. After you have identified a corridor or intersection in need of safety improvements, what comes next?
5. How well do your local leaders and agency staff understand road safety issues?

# Your Input for Safety Webinars

---



**What will be valuable to learn during this project?**



# Next Steps

