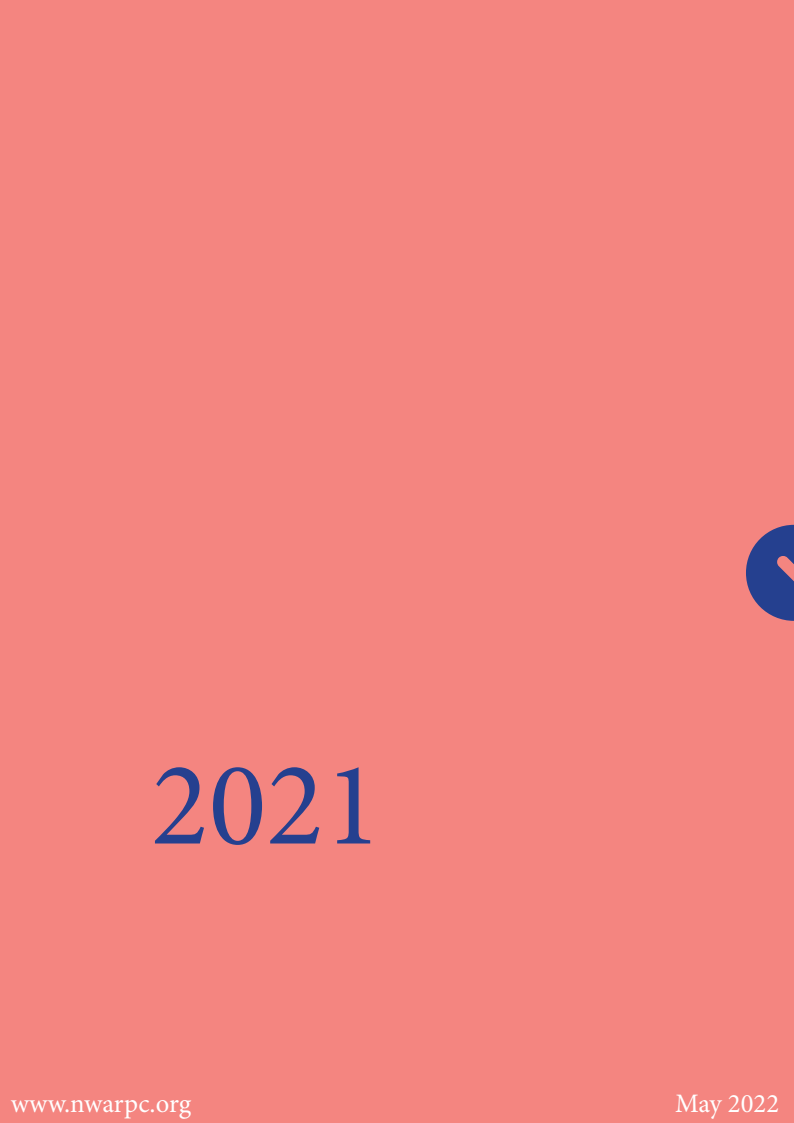




# Annual Report



2021





# Northwest Arkansas Regional Planning Commission (NWARPC)



American Planning Association Arkansas Chapter Conference in Rogers, AR

The Northwest Arkansas Regional Planning Commission (NWARPC) was formed in 1966. In 1983, NWARPC was designated as the Metropolitan Planning Organization (MPO) under U.S. DOT regulations for transportation planning purposes. In 2021 NWARPC had 44 members with 37 jurisdictions in Benton and Washington Counties in Arkansas and three jurisdictions in Missouri. The MPO has four permanent committees: the Regional Planning Commission/Policy Committee (RPC/Policy Committee), the Technical Advisory Committee (TAC), the Active Transportation Committee (ACT), and the Northwest Arkansas GIS Users Group.

The RPC/Policy Committee is the chief decision-making body for the MPO and consists of the jurisdictions' chief elected official and/or other appointed representatives. The TAC develops the technical aspects of plans and reports and makes recommendations to the RPC/Policy Committee. The NWARPC is a multi-modal transportation planning agency for the region. In 2021 NWARPC focused on implementing its long range transportation plan, the 2045 Metropolitan Transportation

Plan (NWARPC 2045 MTP), the FFY 2021-2024 Transportation Improvements Program (TIP), updating its Congestion Management Plan (CMP), the Transportation Systems Maintenance and Operations (TSMO), updating its Intelligent Transportation Systems(ITS), and started the update to the Bicycle and Pedestrian Transportation Plan. The NWARPC, as the designated Metropolitan Planning Organization (MPO), is responsible for the coordination of transportation planning activities in Benton County, Washington County, and a portion of McDonald County, Missouri. This geographic area is known as the Metropolitan Planning Area (MPA). The TIP document applies to the MPA and is required under federal transportation legislation and lists all federally funded transportation and transportation-related projects to be undertaken within the transportation study area by implementing agencies over the next four years. NWARPC develops the Northwest Arkansas Regional Transportation Study (NARTS) TIP, in cooperation with the Arkansas Department of Transportation (ARDOT) and Missouri Department of Transportation (MoDOT).

# Index

## 1

Words from our Chairman	04
Transportation Projects	05
Bella Vista Bypass Completion	06
US 412 Future Interstate Designation	07
Rethinking Hwy 71B	08
Improving Hwy 112	09

## 2

Transportation Plans	10
Active Transportation	11
Heritage Trail Partners	12
NWA Bike Ped Plan Update	13
Census 2020 Population Change	14

## 3

Razorback Transit	16
Ozark Regional Transit	17
Stormwater Education	18
Annual Financial Summary	20
APA AR Chapter Conference	21

## 4

Contact	22
Membership	23

**This report was funded in part through grants from the Federal Highway Administration (FHWA), Federal Transit Administration (FTA), and the U.S. Department of Transportation (U.S.DOT). The views and opinions of the Northwest Arkansas Regional Planning Commission (NWARPC) expressed herein do not necessarily state or reflect those of the U.S. Department of Transportation.**

# Words From Our Chairman



*“As you read through the report, I would like you all to think about how Northwest Arkansas Regional Planning Commission Staff and Board Members have been steadfast in their commitment to providing the resources, securing funding, and aiding the region”.*



In this 2021 annual report, the region, partners, and residents have been a part of the juxtaposition of growth and challenges. This is apparent looking at the official census population numbers increase of 28% and 21% respectively in Benton and Washington Counties, with no sign of that trend slowing down.

As the region continues to grow at this pace, projects that increase mobility throughout the region are vital. These projects include the completion of the Bella Vista Bypass, working to improve Hwy 112 and 71 Business, adding more multimodal travel options and capacity, as well as improving mass transit opportunities, while protecting our natural resources for generations to come. All of these constitute focal points for the region and the Commission.

As you read through the report, I would like you all to think about how Northwest Arkansas Regional Planning Commission Staff and Board Members have been steadfast in their commitment to providing the resources, securing funding, and aiding the region. This is happening as we, the region and every member entity in the region work toward the future, as we are all in “this” together.

Thank you all for your time and efforts.

Chris Keeney

# Transportation Projects

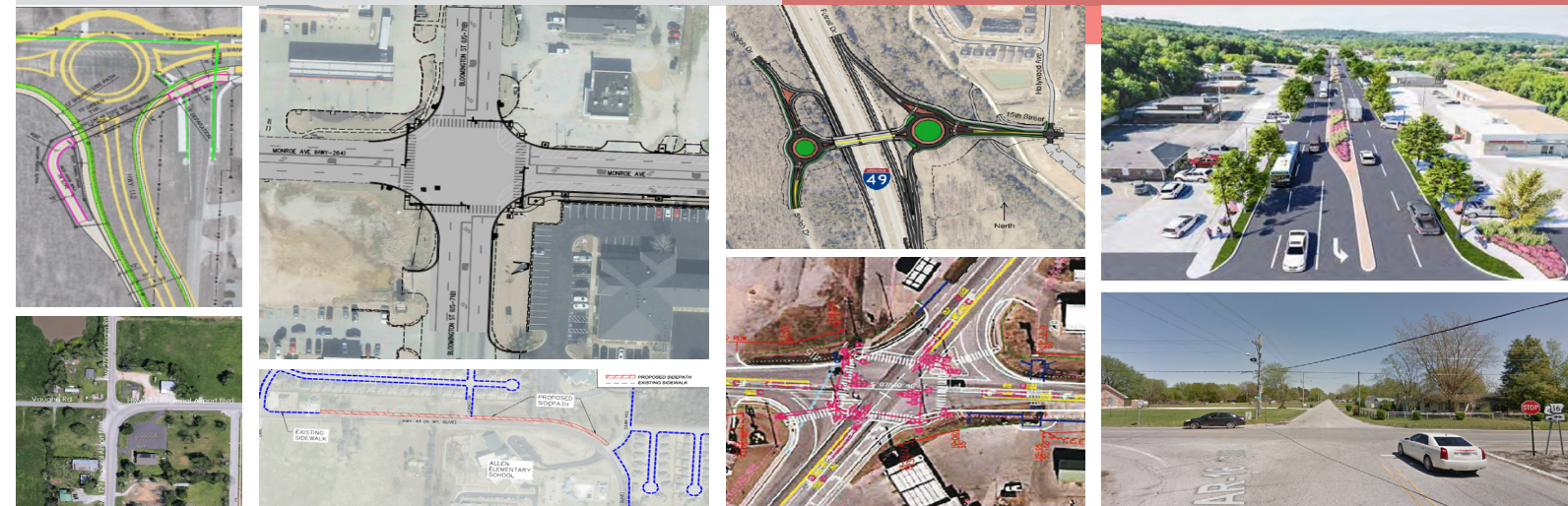
## STBGP-A and TAP Projects

Surface Transportation Block Group Projects - Attributable (STBGP-A) and Transportation Alternative Projects (TAP) are federal-aid grants that NWARPC awards on a competitive basis annually.

In 2021 NWARPC approved thirteen projects in the region to receive a total of \$8,660,319 in funding.

The funding for these projects will be used to preserve and improve conditions and performance on roads, intersections and bridges and also improve infrastructure for the pedestrian and bicycle trail systems in the region.

Jurisdiction	Project	Funding Amount
Benton County	Wagon Wheel Road Bridge Replacement	\$500,000
Bentonville	SW Regional Airport Blvd/S Vaughn Road Intersection	\$500,000
Bentonville-Centerton	Greenhouse Road - Hwy 12 to Hwy 102	\$112,000
Fayetteville	College Avenue Complete Street - North to Township	\$1,500,000
Fayetteville	Hwy 62 Interchange Improvements	\$1,500,000
Fayetteville	Heritage Springs Trail and Tunnel (Hwy 112)	\$250,000
Gentry	Hwy 12/59 Signal and Intersection Improvements	\$250,000
Lowell	US-71B/HWY264 Intersection Improvements	\$730,000
Lowell	Hwy 264/Bellview /Spring Creek Road Intersection	\$150,000
Siloam Springs	E Kenwood Street (widening, incl. side path)	\$220,000
Siloam Springs	N Mt Olive Side path (between Dawn Hill Rd. and Carl St.)	\$376,000
Springdale	Gene George S. Ph III	\$909,050
Springdale	Gene George S. Ph I	\$1,663,269
	<b>Total</b>	<b>\$8,660,319</b>



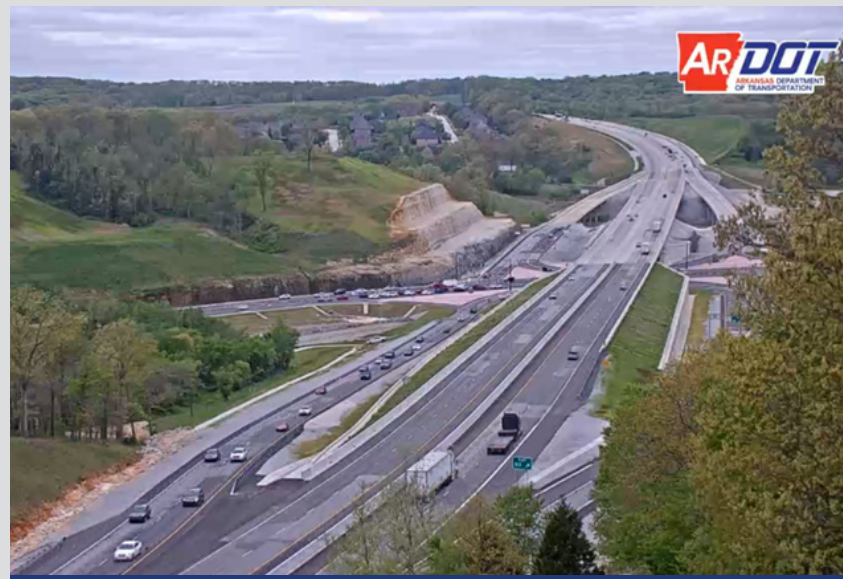




Ribbon-cutting ceremony for the opening of the Bella Vista Bypass (I-49) in September 2021

## Bella Vista Bypass (I-49 Arkansas Missouri Connector) Completion

The Interstate 49 Bella Vista Bypass opened to drivers in October 2021. The decades' long planning project was celebrated with a ribbon-cutting ceremony on September 30, 2021. The Arkansas Gov. Asa Hutchinson and the Missouri Gov. Mike Parson joined supporters from both states at the state line to celebrate the project's completion. The project, consisting of six projects, totaling more than \$220 million started in February 2011 and it is one of the most important highway projects to be completed in Northwest Arkansas. The completion of the project links 265 miles of interstate between Fort Smith and Kansas City, Mo. The road replaces what was the only missing link in that portion of I-49. For years, motorists had to leave I-49 and navigate through a series of stop lights in the city of Bella Vista on U.S. 71/Bella Vista Way. A 2015 study found that the road in Bella Vista was one of the most congested corridors in the region.



Missouri contracted \$58.7 million in April 2020, to build the final 5 miles of I-49 between Pineville, Mo to the state line in McDonald County. Work started May 11, 2020.

The Northwest Arkansas Regional Planning Commission (NWARPC) applied for, and received a \$25 million federal grant in December 2018 and gave the money to Missouri to complete I-49. The I-49 Missouri project is in the NWARPC's transportation planning area. Arkansas officials awarded bids in July 2019 and broke ground in October 2019 on two sections needed to fill missing links on the Arkansas side.

The two projects were the last 2.5 miles from Hiwasse, AR to the state line. The funding was also used to complete the single-point urban interchange

to replace the roundabout at I-49 and U.S. 71 in north Bentonville. A portion of the Bypass opened to traffic in May 2017 with the completion of a 12.1 miles two-lane section connecting U.S. 71/I-49 to Arkansas 72 near Hiwasse.

By easing traffic congestion, the Bella Vista Bypass will not only decrease commute times and reduce transportation cost for motorists, but it will also provide direct access to businesses and community residents to the south and west of Bella Vista. It will also improve transportation connectivity and travel safety in the Northwest Arkansas region.

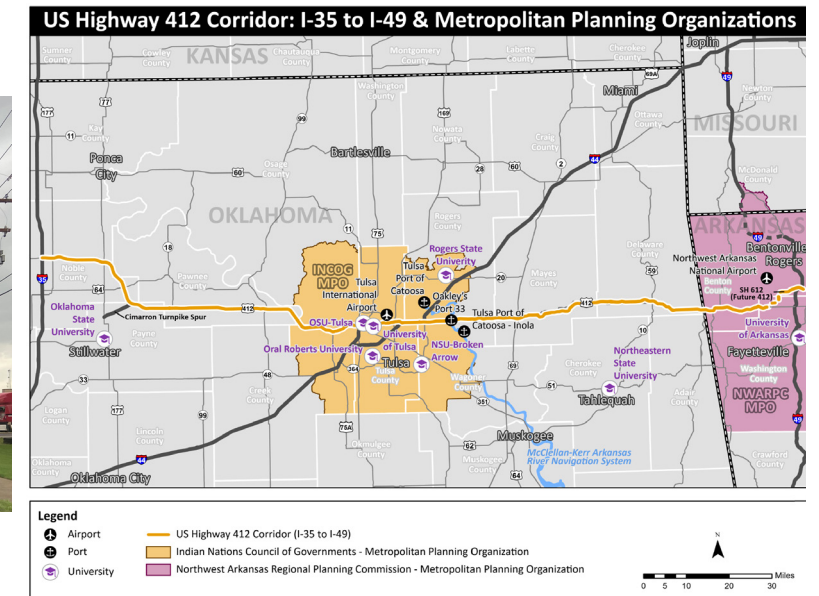
## US 412 Future Interstate Designation



“It is being designed as a freeway, full interstate standards from I-49 to Tontitown. There’s no change as to how the 612 Bypass is being designed. It’s already being designed as a freeway which could then become an interstate.” Tim Conklin - Northwest Arkansas Regional Planning Commission



US Hwy 412 (Sunset Avenue) in Springdale



A section of U.S. 412 in Arkansas and Oklahoma has been officially designated as a future interstate on the National Highway System.

This section of highway connects Interstate 35 in Noble County, OK and Interstate 49 in Springdale, AR. The designation is included in the new infrastructure bill and it will authorize the U.S. Department of Transportation to add segments of the corridor to the interstate system when certain criteria are met.

The Northwest Arkansas Regional Planning Commission passed a resolution in May 2021 supporting the designation. In Arkansas, the route would use the new U.S. 412 Springdale Northern Bypass, when completed. Phase one of the bypass -- designated Arkansas Highway 612 -- opened between Lowell and Arkansas Highway 112. Phase two of the bypass, from Arkansas Highway 112 to U.S. 412 in Tontitown, AR will continue the project. In Oklahoma, the

route likely would follow the current U.S. 412 route through the Tulsa, Oklahoma metro area.

The Oklahoma Department of Transportation, in collaboration with the Arkansas Department of Transportation on the Arkansas portion of the highway, has commissioned a study to assess the need for upgrading about 189 miles of U.S. 412 to interstate standards.

Connecting Northwest Arkansas and north central Oklahoma with an interstate highway will encourage economic development along the corridor and expand opportunities for employment in the region. It will also make travel easier and safer.



# Rethinking Hwy 71B

In 2018, Fayetteville launched a community planning process to rethink the 71B corridor. The goal of the process was to help develop strategies to improve the corridor's economic vitality, address congestion issues, increase affordable housing, make travel safe and convenient for all modes of travel, encourage active and healthy living, and create an attractive entry to Fayetteville's downtown and adjacent neighborhoods.

The 71B corridor serves as the major north-south arterial through the central part of the City of Fayetteville and it is also a major commercial and retail destination. Maintaining and improving the corridor will allow it to continue to serve mobility needs, and to continue to develop/redevelop as a commercial corridor.

A section of the 71B corridor, from North St. to Township St. has been selected to receive STBGP-A funding in 2021.



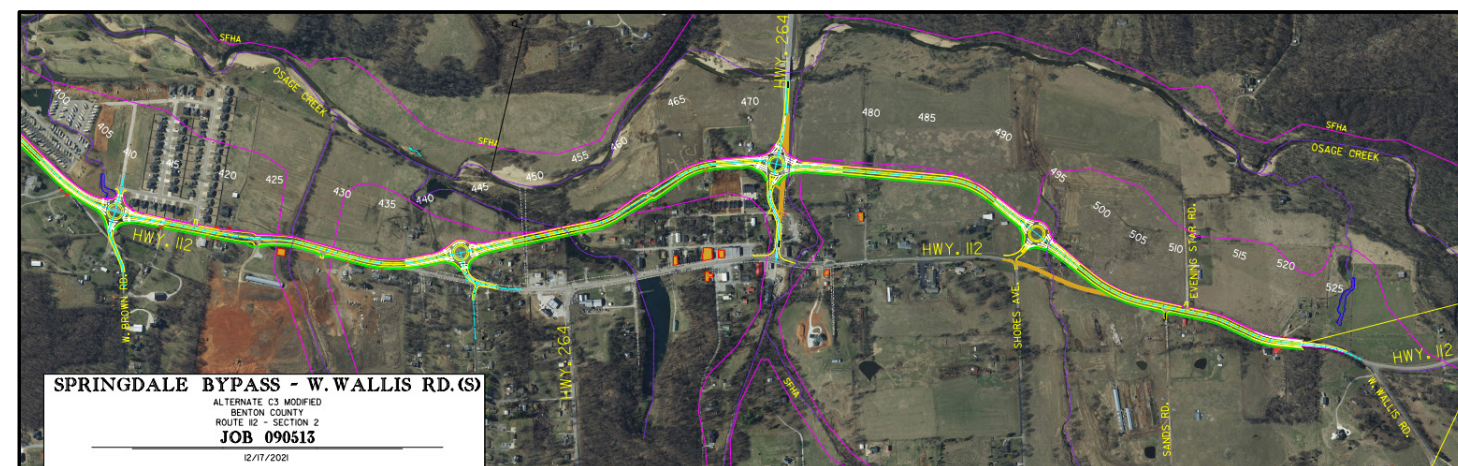
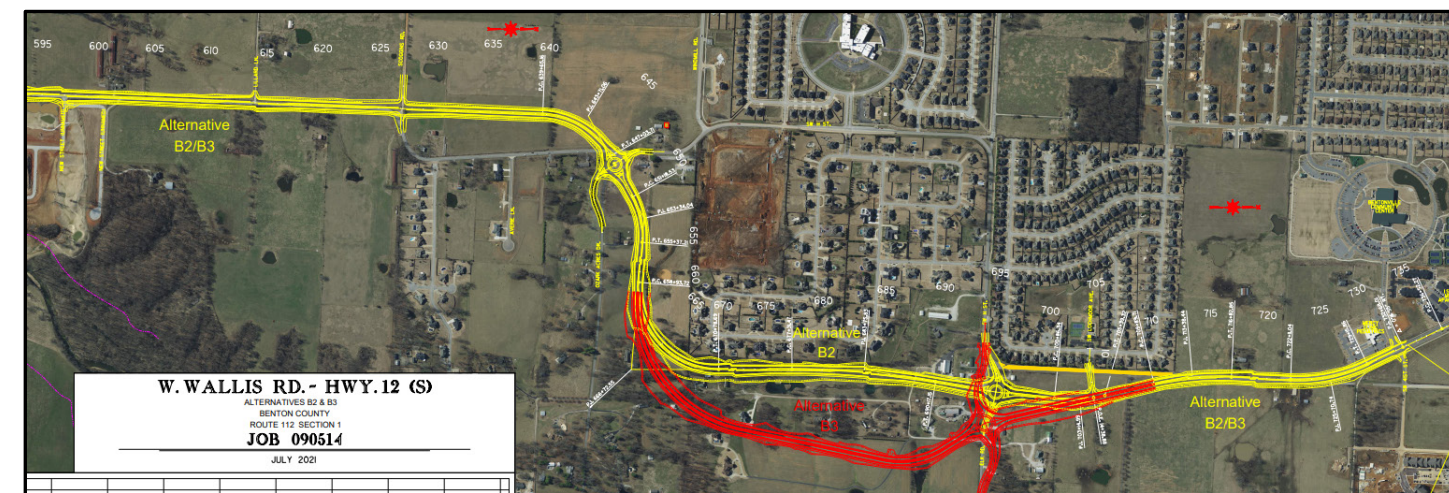
# Improving Hwy 112



## NWARPC's Regional Vision for Hwy 112

NWARPC's regional vision for Hwy 112 includes a design with access management, a raised median, and the use of roundabouts for intersection control, where feasible, and the construction of a 12-foot sidewalk/side path with a 6-foot greenspace (Heritage Springs Trail). This vision also addresses meeting AASHTO Guidelines for the development of bicycle facilities, a side path – along the road and across bridges and overpasses. This vision also addresses designing the project(s) to meet Federal-aid requirements in order to allocate federal aid for the projects.

Hwy 112 Improvements and plans





# Transportation Plans

NWARPC started work on three transportation improvement plans that will effectively address transportation issues and will assist in improving travel reliability, performance and safety in the region: Intelligent

Transportation Systems Architecture and Deployment Plan (ITS), Congestion Management Process (CMP) and the Transportation System Management and Operations Plan (TSMO).



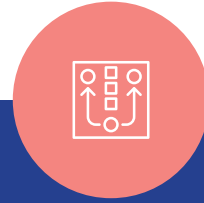
## Intelligent Transportation Systems Architecture and Deployment Plan (ITS)

An Intelligent Transportation Systems (ITS) is a combination of leading-edge information and communication technologies used in transportation and traffic management systems to improve the safety, efficiency, and sustainability of transportation networks, to reduce traffic congestion and to enhance drivers' experiences. NWARPC, in partnership with ARDOT is working on updating its 2007 ITS plan. The final plan will be completed in 2022.



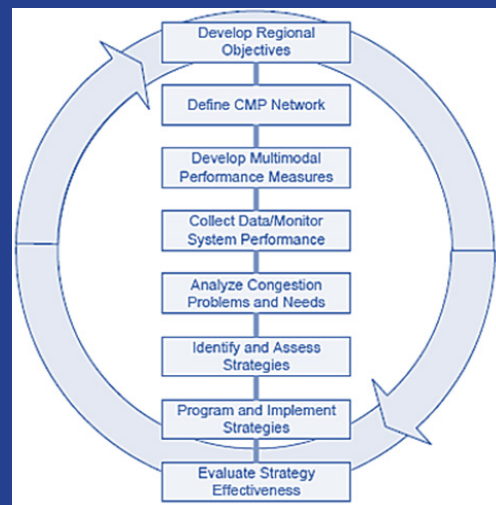
## Transportation System Management and Operations Plan (TSMO)

The development of the TSMO plan started in September 2021. The Transportation System Management and Operations (TSMO) is a strategic approach to proactively improve mobility for all modes of transportation by integrating planning and design with operations and maintenance to holistically manage the transportation network and optimize existing infrastructure. The final plan will include innovation, collaboration, and performance-based decision making strategies.



## Congestion Management Process (CMP)

A CMP is a systematic process for identifying congestion and its causes, developing monitoring processes to measure transportation system performance and reliability, and developing congestion management strategies and moving them into the funding and implementation stages. The plan is currently being developed and will include a list of congested corridors based on the National Performance Management Research Dataset (NPMRDS) with action items and general strategies to address the identified congested segments.

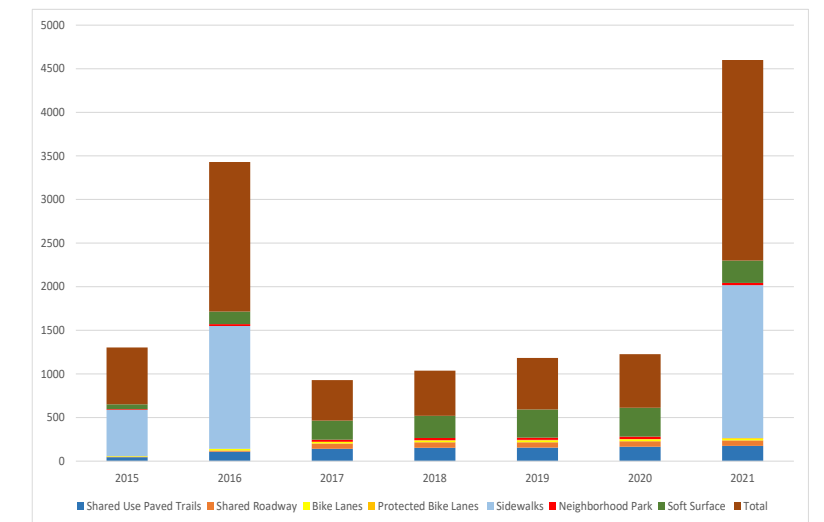
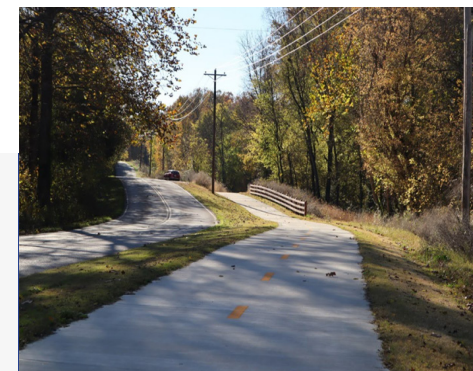


Elements of the Congestion Management Process

# Active Transportation

The Northwest Arkansas Active Transportation Committee continued to meet in 2021. Below are a few of the items the ACT Committee worked on:

- The Butterfield Stage Coach Experience Route from Springfield, MO to the Oklahoma line in Fort Smith, AR.
- The Heritage Springs Trail was adopted as the name for the western regional trail – a 12' sidepath from Bentonville to Fayetteville along Hwy 112.
- An update of the NWA Regional Bicycle and Pedestrian Master Plan including Plans for 31 cities.
- Sent comments to be included in the Manual for Uniform Traffic Control Devices (MUTCD) to update streets and highways that govern signs, signals and markings.
- Developing a policy for signage and street markings and detour and cross section consistency for the region's trails.
- Update sidewalk data using aerial imagery for cities from 2014 to 2021 based on aerial photography.



Total mileage of trails and sidewalks built in the region since 2015

Blowing Springs Greenway in Bella Vista completed in 2021. This 3-mile trail connects the Razorback Regional Greenway to Blowing Springs MTB trails and to Metfield Park and pump track.

NWARPC worked with ARDOT, MODOT, local government entities and advocacy groups on creating and adopting the development of the US Bicycle Route System 51 (USBR51) routes through Benton and Washington Counties in Arkansas and McDonald County in Missouri.



# Heritage Trail Partners

Heritage Trail Partners (HTP) worked diligently to inventory signs for the Heritage Trail in Benton County. The HTP received a grant from the Benton County Historical Preservation Society to replace signs in Benton County. The Benton County Road Department began installing new signs and replacing damaged and faded signs in 2021.

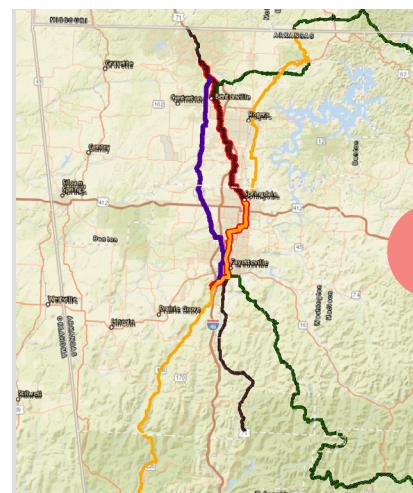
The Heritage Trail Partners also approved an update to the Heritage Trail Plan and map. The Heritage Trail Plan was updated to Version V which included modifying the Heritage Trail Plan map to remove trails outside of the MPO, trail changes correcting mapping errors and incorporate historical information discovered since the last map update in the Bentonville, Lincoln, Prairie Grove, Siloam Springs, Springtown and the unincorporated area in Benton County.

Additional information was also added which included the following stipulation:

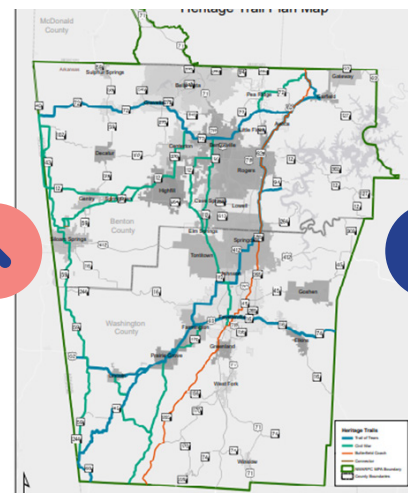
*“When major road improvements are made to Heritage Trail routes where the Northwest Arkansas Bicycle/ Pedestrian Master Plan calls for a paved sidepath, and where other major road improvements have the potential to connect to the region’s existing and future paved multi-use trail network, the preferred cross section from the Heritage Trail Plan would be a 10 to 12-foot multiuse sidepath along one side of the route with a six-foot sidewalk on the other side”.*

The Board also approved a recommendation to the Active Transportation Committee (ACT) to adopt the title “Heritage Springs Trail” for the trail that will be alongside Highway 112 when improved.

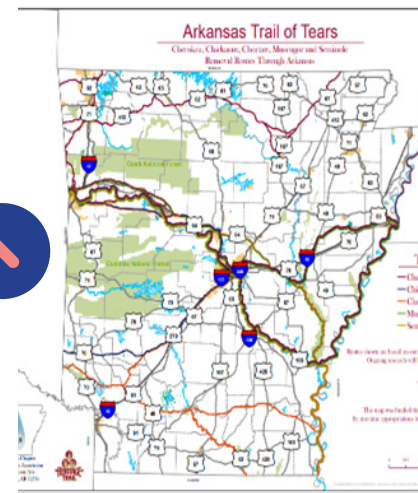
The Heritage Trail Plan was adopted by Heritage Trail Partners on January 15, 2021 and then adopted by the RPC/Policy Committee by Resolution #2021-01 on January 27, 2021



Butterfield Stagecoach Experience Trail



Heritage Trail Plan Map



Arkansas Trail of Tears Map

# NWA Regional Bike Ped Plan Update

In 2021 an update to the current Northwest Arkansas Bicycle and Pedestrian Master Plan was initiated. The plan update will include a review of the existing plan adopted in 2015, reviewed goals and objectives, review of proposed trail connections, a public input plan and inclusion of additional cities’ plans. The pan update is estimated to be completed by late 2022.



Improved tunnel under the Fulbright Expressway on Razorback Greenway in Fayetteville.



Razorback Greenway at 15th Street in Fayetteville.



Book exchange box on the Razorback Greenway at Silent Grove Rd.



I-49 (Bella Vista Bypass) tunnel to accommodate the Razorback Greenway.



Wayfinding artwork in downtown Springdale.



2021 Square 2 Square Bike Ride Event Start and Finish Lines (bi-annual bike ride event connecting Bentonville and Fayetteville).



[Northwest Arkansas Trails and Bikeways Interactive Map](#)



## Northwest Arkansas continues to grow

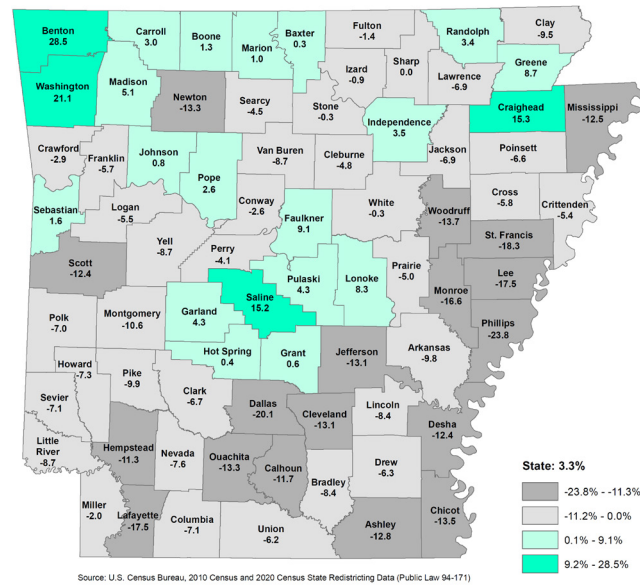
# Census 2020 Population Change

The 2020 Census population numbers were released in August 2021 and, according to the data, Benton and Washington counties continued to grow at a steady and noteworthy pace. Percentage wise Benton County's population increased by 28.5% while Washington County's population increased by 21.1% compared to the 2010

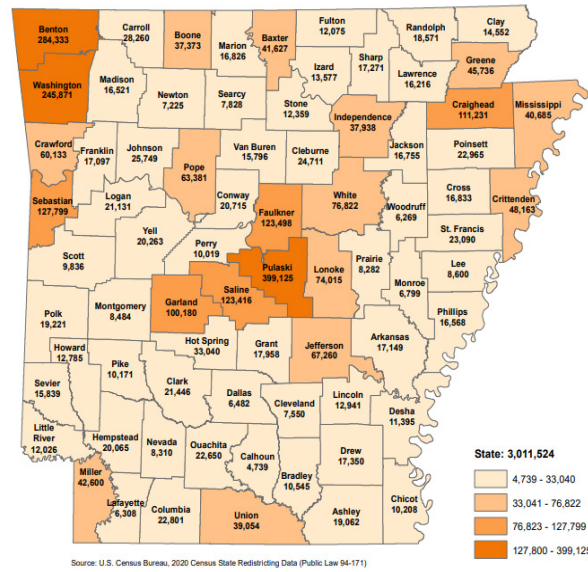
Census numbers. This increase totaled 105,800 people for the two-county since 2010.

The four largest cities (Fayetteville, Springdale, Rogers and Bentonville) added 67,540 more people since 2010 totaling together 305,197 people, an increase of 63.84% compared to a decade ago.

## 2010-2020 Percent Change in Population by County



## 2020 Total Population by County



Benton and Washington Counties total population is now 530,204, with Benton County totaling 284,333 and Washington County totaling 245,871. The two counties combined represent 17.6% of the State population of 3,011,524.

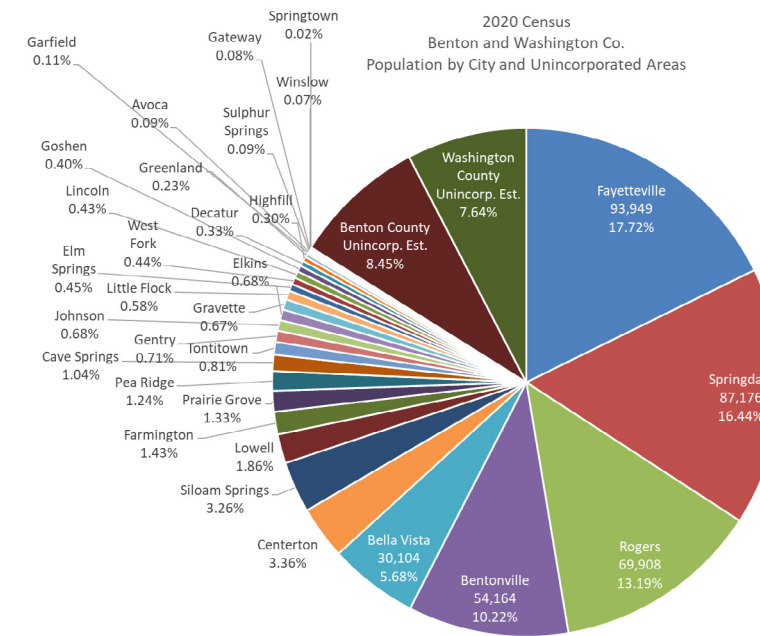
The graphic below illustrates the population percentage of each jurisdiction in the Washington and Benton counties. Notable population increases, however have occurred also in smaller jurisdictions such as Cave Springs where population has increased by almost 200% since 2010 (from 1,729 to 5,495) or Centerton where population almost doubled since 2020, from 9,515 in 2010 to 17,792 in 2020.

all jurisdictions that requested help in compiling redistricting maps.

**Redistricting:** redrawing of legislative district lines following the census, to accommodate population shifts and keep districts as equal as possible in population. The GIS team at NWARPC helped school dsitric boards, the two counties and jurisdictions in the two counties in the process of redistricting.

As a consequence of change in population redistricting was necessary in numerous cases and NWARPC assisted

## Census 2020 Population by Jurisdiction



American Plannig Association (APA) AR Chapter Conference in Downtown Bentonville

Jurisdiction	2020 Census Benton and Washington Co. Population	Percent
Fayetteville	93,949	17.72%
Springdale	87,176	16.44%
Rogers	69,908	13.19%
Bentonville	54,164	10.22%
Bella Vista	30,104	5.68%
Centerton	17,792	3.36%
Siloam Springs	17,287	3.26%
Lowell	9,839	1.86%
Farmington	7,584	1.43%
Prairie Grove	7,045	1.33%
Pea Ridge	6,559	1.24%
Cave Springs	5,495	1.04%
Tontitown	4,301	0.81%
Gentry	3,790	0.71%
Johnson	3,609	0.68%
Elkins	3,602	0.68%
Gravette	3,547	0.67%
Little Flock	3,055	0.58%
Elm Springs	2,361	0.45%
West Fork	2,331	0.44%
Lincoln	2,294	0.43%
Goshen	2,102	0.40%
Decatur	1,773	0.33%
Highfill	1,587	0.30%
Greenland	1,213	0.23%
Garfield	593	0.11%
Avoca	487	0.09%
Sulphur Springs	481	0.09%
Gateway	436	0.08%
Winslow	365	0.07%
Springtown	83	0.02%
Benton County Unincorp. Est.	44,795	8.45%
Washington County Unincorp. Est.	40,497	7.64%
<b>Total</b>	<b>530,204</b>	<b>100.00%</b>



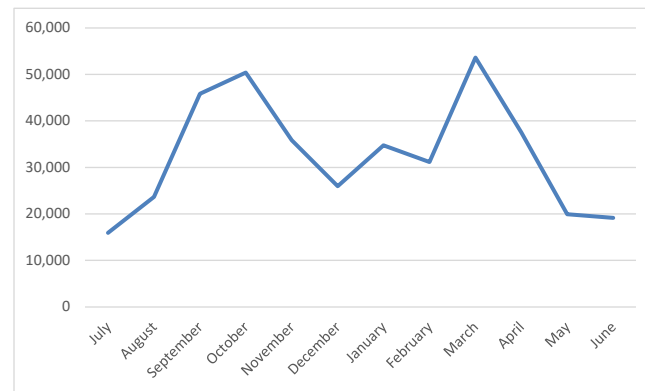
# Razorback Transit

Razorback Transit is running at least 10 routes and, on a typical day, the routes run from 6:30AM to 10:40PM. Since its origins as a bus shuttle program in the late 1970s, Razorback Transit has continuously served the University of Arkansas community and the City of Fayetteville, carrying as many as 2 million passengers during a normal year.

During FY 2021 (July 2020 to June 2021), the total

ridership (including paratransit and on-demand) was 404,629. The drop in ridership is due mainly to the Covid-19 pandemic. Total ridership for the fixed-routes only in FY 2021 was 393,759 as illustrated in the graphic below.

Razorback Transit riders can use the app [PassioGo](#) to see the current routes and schedule and access live routing.



Fixed routes ridership in FY 2021 (July 2020 to June 2021)



NWARPC, is the designated recipient for the Fayetteville-Springdale-Rogers AR-MO Urbanized Area and Formula Grants apportioned by FTA.

NWARPC is also responsible for monitoring compliance with Federal Transit Administration (FTA) requirements for the life of FTA Section 5339-funded projects that are maintained by subrecipients in the MPO area: Ozark Regional Transit Authority and RazorbackTransit.

# Ozark Regional Transit

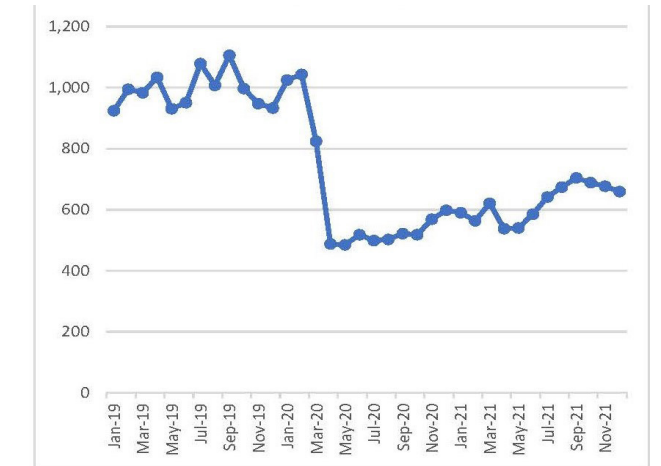
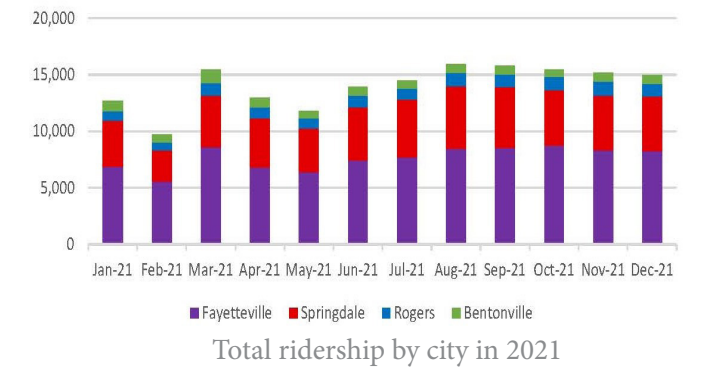
ORT operates four fixed routes in Fayetteville and three in Springdale. ORT offers on-demand transit in Rogers and Bentonville using two buses in each community. An express bus service that runs between Fayetteville and Bentonville is also available and used mostly by students at the Northwest Arkansas Community College.

As in 2020, ridership in 2021 has been down compared to pre-pandemic time.

In 2021 the total annual ridership, including paratransit was 170,527. The adjacent graphics show total monthly ridership between January and December 2021 and daily passengers by month between January 2019 and November 2021. Riders on ORT can use [PassioGo](#) to see current routes and access live routing.

In 2021 ORT was selected to be a part of the **Crystal Bridges Arts and Social Impact Accelerator Program (ASAP)**. The program was designed to be a catalyst to educate the communities on the importance of public transit in Northwest Arkansas. ORT was paired with artist Octavio Logo for this program. The program is expected to continue on into 2022. The “Where To” event was a pop-up art experience inviting visitors to share their thoughts and experiences about local public transit, hosted in partnership with Ozark Regional Transit (ORT). The event took place at the Hillcrest Towers in Fayetteville and created a temporary mural on the side of an ORT bus. The event also included a dialogue station hosted for a conversation and writing activity to inform the future of Northwest Arkansas’ public transit.

It was a beautiful day for great art and conversation, as the pictures to the right illustrate it.



9  
FIXED ROUTES

296  
STOPS

51,300  
WITHIN 0.25MI OF STOPS

14,644  
AVG. MONTHLY PASSENGERS



Protecting our environment while educating

## Stormwater Education



Cleanup team in Farmington, AR

Seventeen Northwest Arkansas cities, Benton and Washington counties, and the University of Arkansas are partnering with the U of A System Division of Agriculture Cooperative Extension Service and the NWA Regional Planning Commission (NWARPC) on a regional approach to stormwater management.

The 17-year partnership creates the NWA Urban Stormwater Education Program and is responsible for the educational components that are required through the National Pollutant Discharge Elimination System (NPDES) permit for Municipal Separate Storm Sewer System (MS4) jurisdictions.

During the 2021 year, the Extension's stormwater program held 42 in-person or virtual events and staffed displays that reached 2,093 MS4 residents with the message of stormwater pollution prevention. 966 residents participated in public involvement activities such as litter clean-ups, pledges to reduce stormwater pollution, or participated on steering committees. The program reached an audience of 27,603 through 5 social media accounts and [www.knowtheflownwa.com](http://www.knowtheflownwa.com). Mass media outlets such as radio, television and newspaper reached residents through articles, PSAs, and photographs.

Available to all **MS4 jurisdictions**, the pre-construction educational program is developed for contractors and includes post-test examinations eliminating the "I didn't know" response that is often used during site inspections. In 2021, there were an additional **259 construction industry personnel** trained on Stormwater Construction BMPs. Additional stormwater construction inspection trainings were conducted with local builders. As part of the permit requirements, 526 employees of MS4 cities, counties and UofA were trained on stormwater and good housekeeping BMPs.

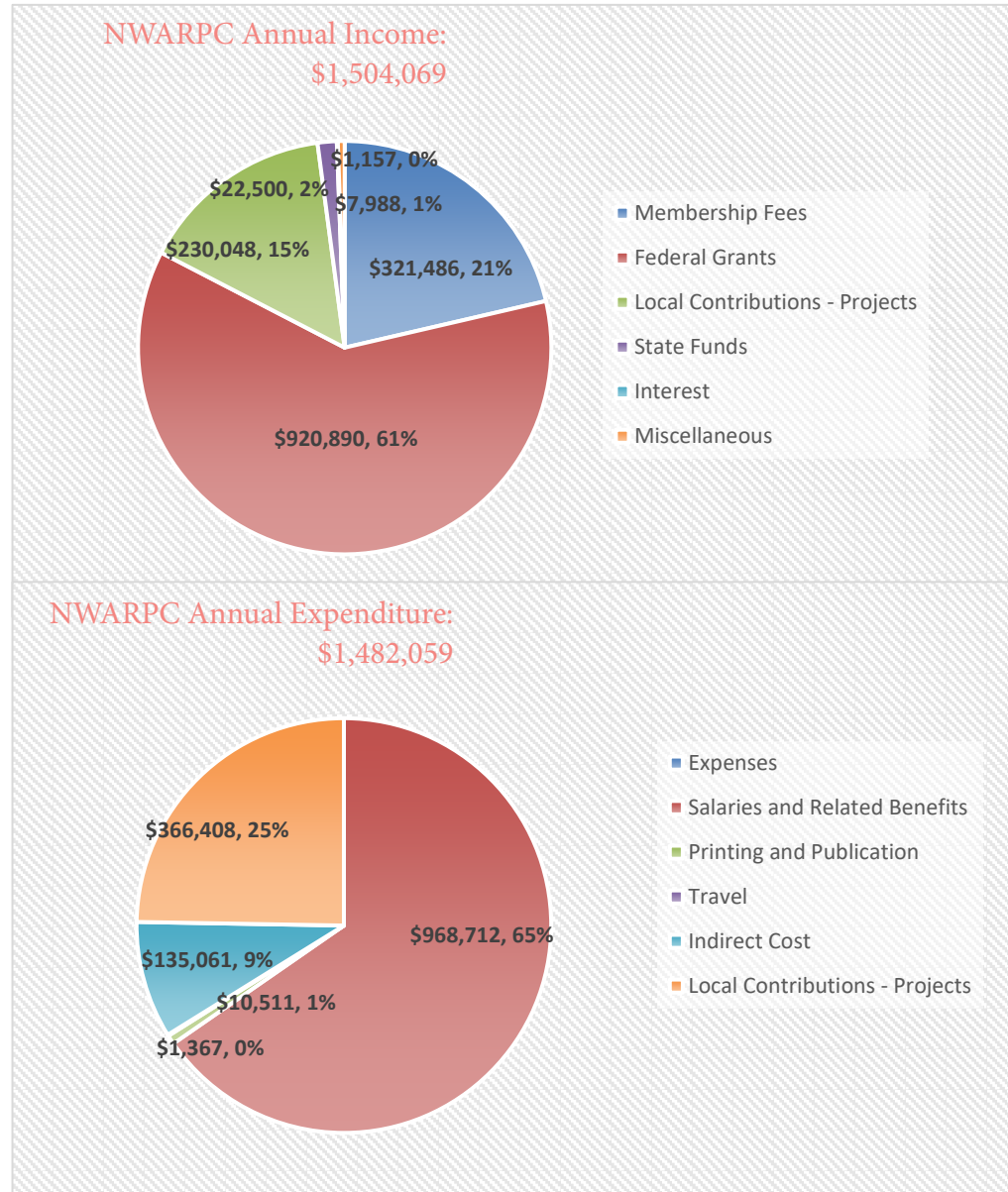
In 2021, the 5-yr NPDES MS4 permit educational emphasis was litter prevention. In response, a regional litter cleanup which was traditionally a one-day event was scaled up to a 6-week long litter cleanup over the two-county area. The event, called "**Pick Up Where You Play**," enticed **502 volunteers** to remove **11,520lbs. of litter from 22 locations** with a chance to win a grand prize of a guided striped fishing trip on Beaver Lake. Additionally, a billboard campaign targeting accidental litter blowing from truck beds was design and ran on 4 area billboards for 7 months. The message of "**Don't Blow It**" pictured a truck with litter blowing from its bed.

The goal of the program is to help jurisdictions stay in compliance of permit requirements which are set to maintain local water quality standards. To do this, the program, with NWARPC, conducts bi-monthly stormwater compliance meetings for MS4 representatives to ask questions of what others in the area are doing. The regional program provides shared knowledge and individualized audit support for each jurisdiction. Additional guidance is given to MS4s as unique situations arise to find resources that ensure they are staying compliant with federal and state stormwater regulations. This regional program has received praise from the Arkansas Division of Environmental Quality which oversees the permit requirements as an innovative and cost-efficient way to help jurisdictions stay compliant.





## Annual Financial Summary



## Clearinghouse Review

NWARPC is the federally designated review agency and Clearinghouse for Washington and Benton County portion of the Fayetteville/Springdale/Rogers, Arkansas, Metropolitan Statistical Area (MSA). The purpose of this designation, which is made pursuant to Executive Order #12372, is to ensure that requests for federal funding are reviewed to determine compatibility with local and regional

plans, and that such funding will not be used for duplicative purposes. In 2021, federal-aid grants with a total value of \$175,862,309 were submitted and were cleared in order to ensure that proposed uses were consistent with, and in furtherance of the goals, objectives and planned development for the MSA.

## American Planning Association (APA) Arkansas Chapter Conference



Staff organized and participated in a very successful conference of the Arkansas Chapter of the American Planning Association (APA) between September 15-16, 2021. Due to Covid-19 pandemic restrictions the attendees participated in outdoors meetings only. Meetings and presentations took place in Fayetteville, Springdale, Rogers and Bentonville. The participants got to experience great tours of Northwest Arkansas assets and interesting presentations outdoors in spite of the hot summerlike weather.





## Contact

### NWARPC STAFF

**Jeff Hawkins - Executive Director**

**Tim Conklin, AICP - Assistant Director/ NARTS Director**

**Donna Lange - Office Manager**

**Nicole Gibbs, AICP - Regional Planner**

**Cristina Scarlat - GIS Coordinator/Travel Demand Modeler**

**Elizabeth Bowen - Project Manager**

**Stephanie Shaw - Transportation GIS Analyst**

### Northwest Arkansas Regional Planning Commission

1311 Clayton St., Springdale, AR, 72762

Phone : (479) 751-7125

[comment@nwarpc.org](mailto:comment@nwarpc.org)

[www.nwarpc.org](http://www.nwarpc.org)

Facebook: @rpcnwa

*Cristina Scarlat:* writing, editing, layout and graphics  
All photos by NWARPC and partners except where noted  
Front cover pictures downtown Bentonville (upper left)  
and downtown Springdale (lower right).

**NWARPC NOTICE OF NONDISCRIMINATION POLICY:** The NWARPC complies with all civil rights provisions of federal statutes and related authorities that prohibit discrimination in programs and activities receiving federal financial assistance. Therefore, the NWARPC does not discriminate on the basis of race, sex, color, age, national origin, religion or disability, in the admission, access to and treatment in NWARPC's programs and activities, as well as the NWARPC's hiring or employment practices. Complaints of alleged discrimination and inquiries regarding the NWARPC's nondiscrimination policies may be directed to Nicole Gibbs, AICP, Regional Planner – EEO/DBE (ADA/504/Title VI Coordinator), 1311 Clayton, Springdale,

AR 72762, (479) 751-7125, (Voice/TTY 7-1-1 or 1-800-285-1131); Para llamadas en español, marque el 866-656-1842; para llamadas en inglés, marque el 711 o directamente al 800-285-1131 or the following email address: [ngibbs@nwarpc.org](mailto:ngibbs@nwarpc.org). This notice is available from the ADA/504/Title VI Coordinator in large print, on audiotape and in Braille. If information is needed in another language, contact Nicole Gibbs. Si necesita información en otro idioma, comuníquese Nicole Gibbs, 479-751-7125, cuando menos 48 horas antes de la junta.

## Membership

### AGENCY

Avoca

*Bella Vista*

Benton County

Bentonville

Cave Springs

Centerton

Decatur

Elkins

Elm Springs

Farmington

Fayetteville

Garfield

Gateway

Gentry

Goshen

Gravette

Greenland

Highfill

Huntsville

*Johnson*

Lincoln

Little Flock

Lowell

McDonald County, MO

*Pea Ridge*

City of Pineville, MO

*Prairie Grove*

Rogers

Siloam Springs

Springdale

Springtown

Sulphur Springs

Tontitown

Washington County

West Fork

Winslow

ARDOT – Planning

ARDOT Districts

MODOT

Beaver Water District

University of Arkansas

Northwest AR National Airport

### REPRESENTATIVE

Mayor Robert Whitehorn

*Mayor Peter Christie - Vice-Chair*

Judge Barry Moehring, Josh Beam, Jay Frasier

Mayor Stephanie Orman, Shelli Kerr

Mayor Randy Noblett

Mayor Bill Edwards

Mayor Bob Tharp

Mayor Bruce Ledford

Mayor Harold D. Douthit

Mayor Ernie Penn, Melissa McCarville

Mayor Lionel Jordan, Chris Brown, Jonathan Curth

Mayor Gary L. Blackburn

Mayor Andrew Tillman

Mayor Kevin Johnston

Mayor Max Poye

Mayor Kurt Maddox

Mayor Bill Groom

Mayor Michele Reiff

Mayor Darrell Trahan

*Mayor Chris Keeney - Chair*

Mayor Doug Hutchens

Mayor Jeff Van Sickler

Mayor Chris Moore

County Commissioners Bill Lant, Rick Lett, Jamey Cope

*Mayor Jackie Crabtree - Treasurer*

Mayor Greg Sweeten

*Mayor Sonny Hudson - Secretary*

Bob Crafton, Lance Jobe, John McCurdy

Mayor Judy Nation, Phillip Patterson

Mayor Doug Sprouse, Patsy Christie, Jim Ulmer

Mayor Terri Glenn

Mayor Shane Weber

Mayor Angela Russell

Judge Joseph K. Wood, Brian Lester

Mayor S. Heith Caudle

Ann Malkie

Brad McCaleb

Chad Adams (District 4)

Marvin Morris, Britni O'Connor

Lane Crider

Scott Turley

Aaron Burkes

### Other Transportation Planning Partners:

Federal Highway Administration (FHWA) – Amy Heflin

Federal Transit Administration (FTA) – Lynn Hayes

Arkansas State Highway Commission

Razorback Transit – Gary Smith, Adam Waddell

Ozark Regional Transit - Joel Gardner

Human Service Agencies

Arkansas Missouri Railroad



# Annual Report

2021

[www.nwarpc.org](http://www.nwarpc.org)

