

**RESOLUTION #2022-17**

**A RESOLUTION APPROVING AND SUPPORTING THE DEVELOPMENT OF BUTTERFIELD STAGE EXPERIENCE ROUTE FROM SPRINGFIELD, MO THROUGH BENTON COUNTY, AR AND WASHINGTON COUNTY, AR TO FORT SMITH, AR**

**WHEREAS**, the Northwest Arkansas Regional Planning Commission (NWARPC), as the designated Metropolitan Planning Organization (MPO), is responsible for the coordination of transportation planning activities in Benton and Washington Counties in Arkansas and a portion of McDonald County in Missouri; and

**WHEREAS**, bicycle tourism is a growing industry in North America, that contributes to the economies of communities that provide facilities for such tourists; and

**WHEREAS**, the Missouri Bicycle and Pedestrian Federation has designated a corridor from Jefferson City, Missouri to Springfield, Missouri; and

**WHEREAS**, the Missouri Bicycle and Pedestrian Federation has proposed a corridor from Springfield, Missouri to Fort Smith, Arkansas; and

**WHEREAS**, the Cities, Counties, and other stakeholders, have proposed a specific route to be designated as Butterfield Stage Experience Route, a map of which is herein incorporated into this resolution by reference; and

**WHEREAS**, the proposed route for the Butterfield Stage Experience Route is from Springfield, Missouri to the Arkansas State line at N Old Wire Road to Alvin Seamster Road, Dennis Mitchell Road, Perry Road, Boundary Line Road, Highway 62, N Old Wire Road, Sugar Creek Road, N Old Wire Road, Pearl Avenue, Rose Street, N Old Wire Road, N Arkansas Street, S Arkansas Street, S Monte Ne Road, S Old Wire Road, Frisco Cemetery Road, N Primrose Road, E Highway 264, Old Wire Road, E Randall Wobbe Lane, Old Wire Road, Mill Street, Razorback Greenway, Highway 265, Bug Scuffle Road WC 216 to Washington County Line, and continues to Fort Smith connecting multiple cities and multiple counties, connecting cultural and heritage sites, and can therefore provide benefits to residents and businesses, and

**WHEREAS**, NWARPC has reviewed the proposed route and found it to be suitable, and desires that the route be designated so that it can be mapped and signed, thereby promoting bicycling tourism in the area.

**NOW THEREFORE, BE IT RESOLVED BY THE BOARD OF DIRECTORS OF THE NORTHWEST ARKANSAS REGIONAL PLANNING COMMISSION:**

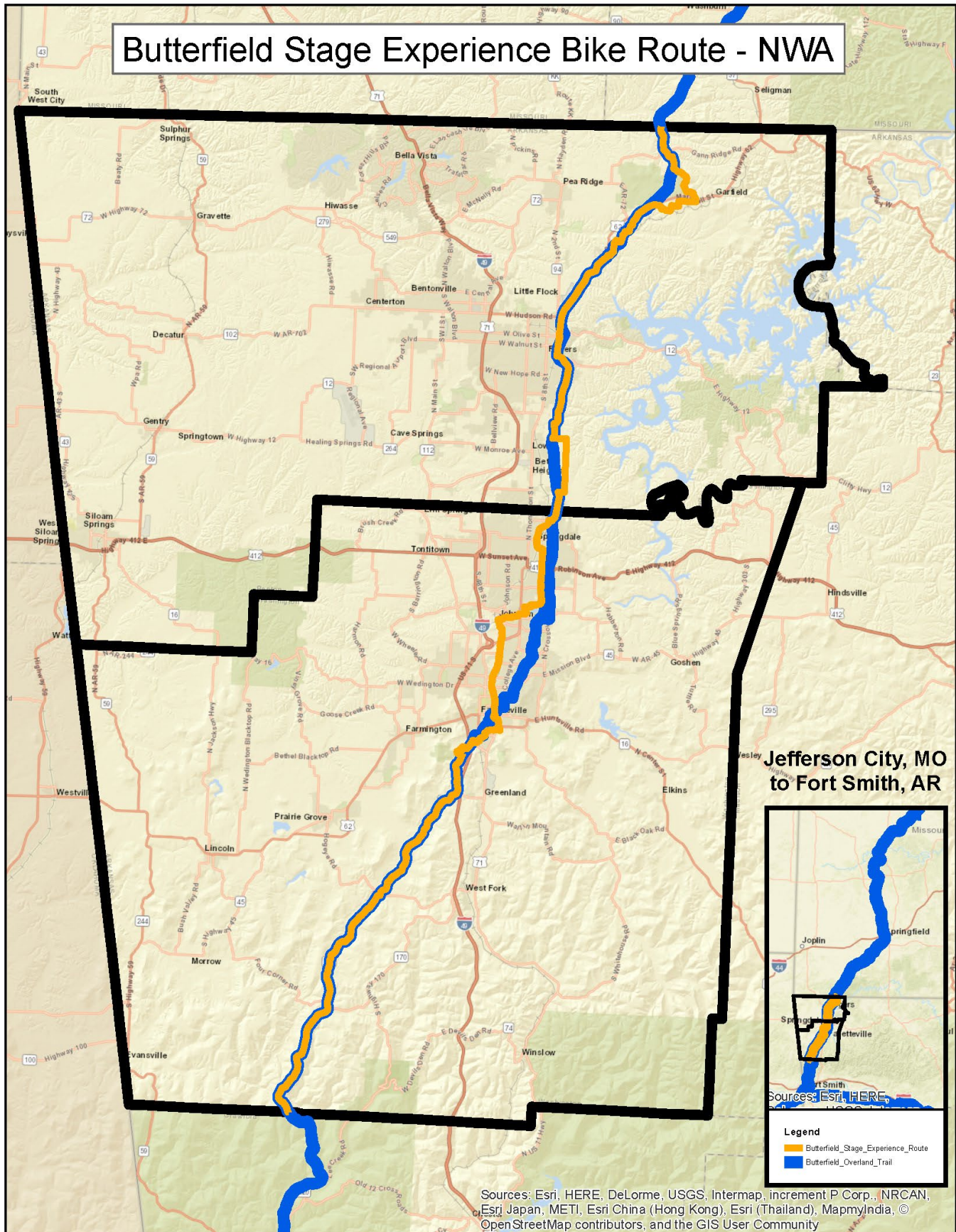
That the NWARPC Policy Committee hereby approves and supports the development of Butterfield Stage Experience Route from Springfield, Missouri to Fort Smith, Arkansas through Benton County, Arkansas, and Washington County, Arkansas utilizing the Razorback Regional Greenway and other city/county streets, and requests that the appropriate officials ensure that the route is officially approved by Adventure Cycling Association as soon as this can be achieved.

**PASSED AND APPROVED THIS \_\_\_\_\_ DAY OF \_\_\_\_\_, 2022.**

\_\_\_\_\_  
Chris Keeney, Chair, NWARPC

ATTEST: \_\_\_\_\_

# Butterfield Stage Experience Bike Route - NWA



Jefferson City, MO  
to Fort Smith, AR

