

**RESOLUTION 14- 1**

**A RESOLUTION APPROVING THE METROPOLITAN PLANNING AREA FOR THE FAYETTEVILLE-SPRINGDALE-ROGERS, AR-MO URBANIZED AREA FOR MPO TRANSPORTATION PLANNING PURPOSES**

**WHEREAS**, U. S. Department of Transportation regulations require an areawide, multi-modal transportation plan and a continuing planning process for urbanized areas, and for the area projected to become urban within 20-25 years henceforth; and

**WHEREAS**, such planning must be carried out by a designated Metropolitan Planning Organization (MPO), which for the urbanized area has been the Northwest Arkansas Regional Planning Commission; and

**WHEREAS**, Decennial Census data has resulted in the expansion of the Fayetteville-Springdale-Rogers Urbanized Area (UZA) into Missouri; thus necessitating a redefined Metropolitan Planning Area (MPA) for transportation planning purposes; and

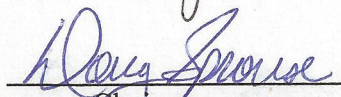
**WHEREAS**, consultations with affected parties in Missouri have resulted in a new recommended Metropolitan Planning Area boundary, and planning participation by appropriate authorities.

**NOW, THEREFORE, BE IT RESOLVED BY THE NWA TRANSPORTATION POLICY COMMITTEE OF THE NORTHWEST ARKANSAS REGIONAL PLANNING COMMISSION (THE MPO):**

**SECTION 1.** That the Metropolitan Planning Area for the Fayetteville-Springdale-Rogers, AR-MO, Urbanized Area, for MPO transportation planning purposes, as shown on the map attached hereto and made a part hereof, is hereby approved.

**SECTION 2.** That the execution of appropriate documents to effectuate MPO participation by Missouri jurisdictions is hereby approved.

PASSED AND APPROVED THIS 26<sup>th</sup> DAY OF February, 2014.

  
Chairman

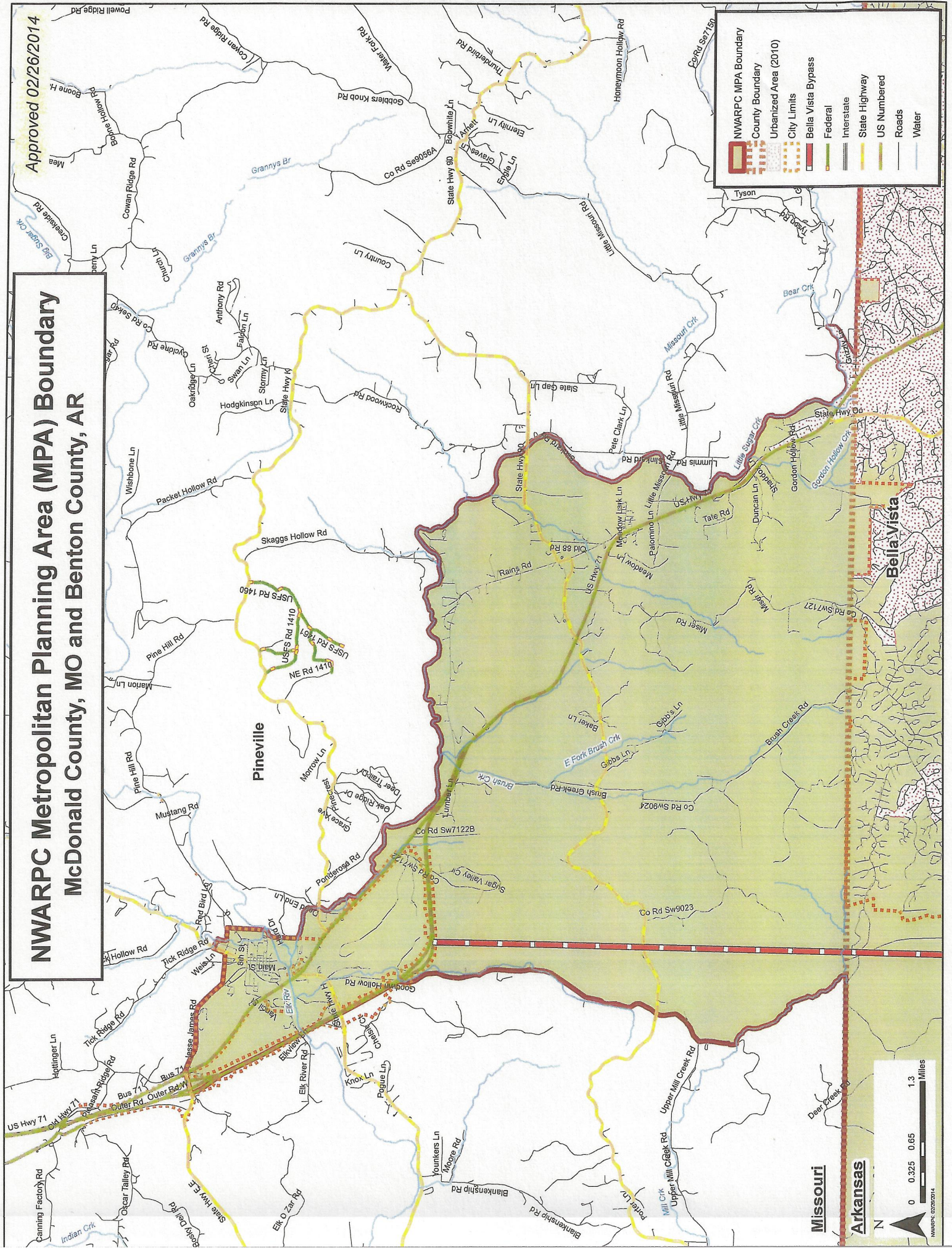
Attest:

  
Director



Approved 02/26/2014

# NWARPC Metropolitan Planning Area (MPA) Boundary McDonald County, MO and Benton County, AR



**Legend**

- NWARPC MPA Boundary
- County Boundary
- Urbanized Area (2010)
- City Limits
- Bella Vista Bypass
- Federal
- Interstate
- State Highway
- US Numbered Roads
- Water

**Scale**

0 0.325 0.65 1.3 Miles

**North Arrow**

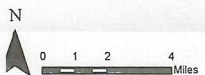
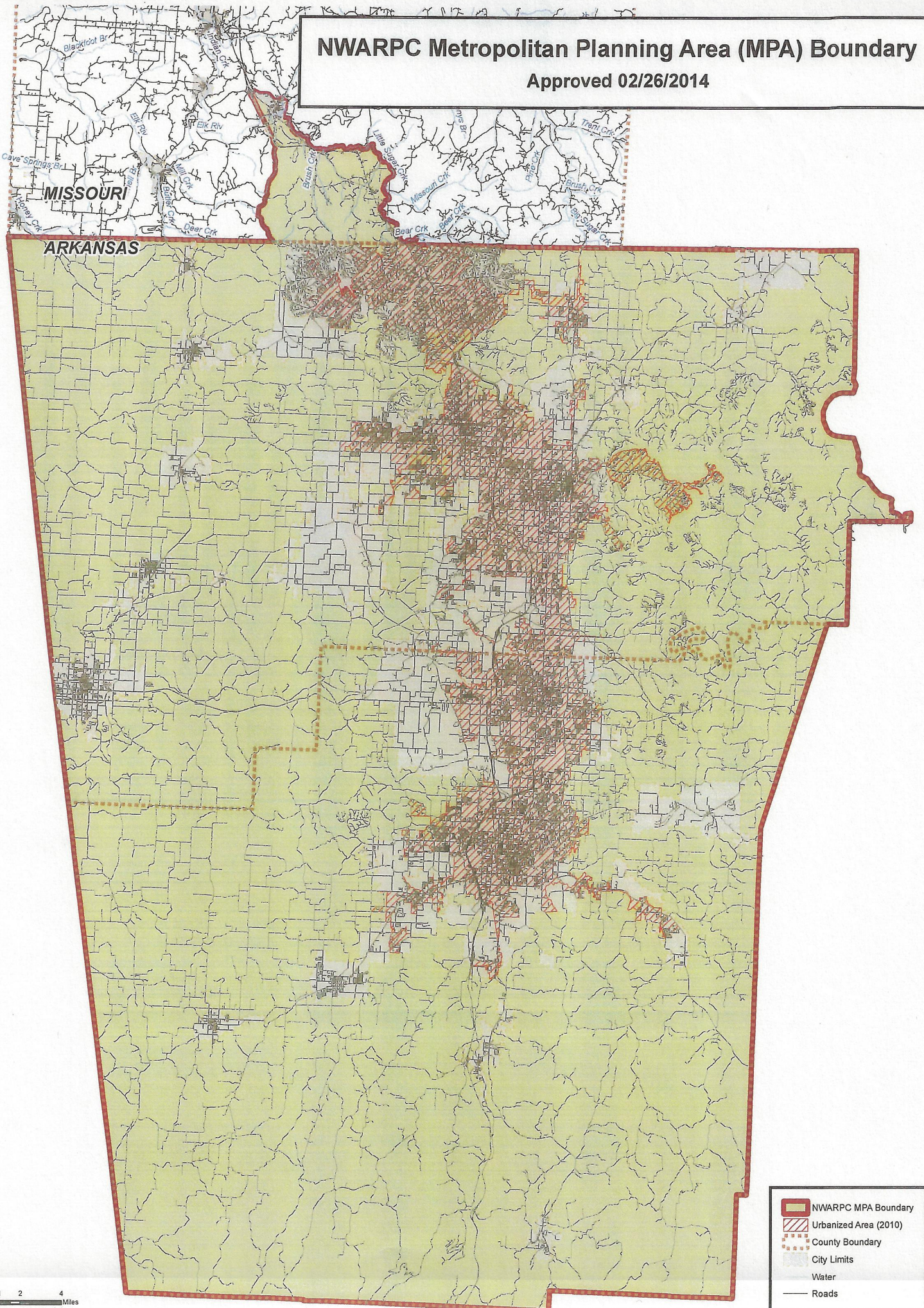
Missouri  
Arkansas

NWARPC 02/26/2014



# NWARPC Metropolitan Planning Area (MPA) Boundary

Approved 02/26/2014



- NWARPC MPA Boundary
- Urbanized Area (2010)
- County Boundary
- City Limits
- Water
- Roads