

50 YEARS

Northwest Arkansas Regional Planning Commission



ANNUAL REPORT

2016

Published May 2017

About NWARPC

The Northwest Arkansas Regional Planning Commission (NWARPC) was formed in 1966 through a cooperative agreement between Benton County, Washington County, and the cities of Bentonville, Fayetteville, Rogers, Siloam Springs, and Springdale. In 1983, NWARPC was designated as the Metropolitan Planning Organization (MPO) under U.S. DOT regulations for transportation planning purposes. The MPO is designated by the Governors of Arkansas and Missouri to conduct the federally mandated 3C (Comprehensive, Continuing and Cooperative) planning process necessary for transportation projects to qualify for federal transportation funds.

Transportation Management Area (TMA) status was recognized after 2010 Census Bureau data indicated the Fayetteville-Springdale-Rogers, AR-MO Urbanized Area (UZA) had grown from 172,585 in 2000 to 295,083 in 2010. The 200,000 population mark is the threshold for an area to become a TMA. With the new UZA boundary extending into Missouri, the Metropolitan Planning Area (MPA) for transportation planning now extends into McDonald County, Missouri. Today, NWARPC's membership includes 35 units of government in Benton, Madison, and Washington Counties, Arkansas; McDonald County and Pineville, Missouri; the Arkansas State Highway and Transportation Department (AHTD); the Missouri Department of Transportation (MoDOT); transit agencies; and Beaver Water District.

The MPO has five permanent committees, the Regional Planning Commission/Policy Committee (RPC/Policy Committee), the Technical Advisory Committee (TAC), the Active Transportation Committee (ACT), the Open Space Committee and the Northwest Arkansas GIS Users Group. The RPC/Policy Committee is the chief decision-making body for the MPO and consists of the jurisdictions' chief elected official and/or other appointed representatives. The TAC develops the technical aspects of plans and reports and makes recommendations to the RPC/Policy Committee. The NWARPC is a multi-modal transportation planning agency for the region.

This report was funded in part through grants from the Federal Highway Administration (FHWA), Federal Transit Administration (FTA), and the U.S. Department of Transportation (U.S.DOT). The views and opinions of the Northwest Arkansas Regional Planning Commission (NWARPC) expressed herein do not necessarily state or reflect those of the U.S. Department of Transportation.



Notice of Nondiscrimination

The Northwest Arkansas Regional Planning Commission (NWARPC) complies with all civil rights provisions of federal statutes and related authorities that prohibit discrimination in programs and activities receiving federal financial assistance. Therefore, the NWARPC does not discriminate on the basis of race, sex, color, age, national origin, religion or disability, in the admission, access to and treatment in NWARPC's programs and activities, as well as the NWARPC's hiring or employment practices. Complaints of alleged discrimination and inquiries regarding the NWARPC's nondiscrimination policies may be directed to Celia Scott-Silkwood, AICP, Regional Planner – EEO/DBE (ADA/504/Title VI Coordinator), 1311 Clayton, Springdale, AR 72762, (479) 751-7125, (Voice/TTY 7-1-1 or 1-800-285-1131; Para llamadas en español, marque el 866-656-1842; para llamadas en inglés, marque el 711 o directamente al 800-285-1131) or the following email address: cscott-silkwood@nwarpc.org

NWARPC Membership

Avoca	Mayor Jordan W. Sullivan, Nanette Barnes
Bella Vista	Mayor Peter Christie
Benton County	Judge Barry Moerhing, John Sudduth, Jay Frasier/Dean Klingman
Bentonville	Mayor Bob McCaslin, Shelli Kerr, Troy Galloway
Bethel Heights	Mayor Cynthia J. Black, Amanda Fenton
Cave Springs	Mayor Travis Lee
Centerton	Mayor Bill Edwards -Treasurer, Rick Hudson
Decatur	Mayor Bob Tharp
Elkins	Mayor Bruce Ledford
Elm Springs	Mayor Harold D. Douthit
Farmington	Mayor Ernie Penn, Melissa McCarville
Fayetteville	Mayor Lioneld Jordan, Justin Tennant, Don Marr
Garfield	Mayor Gary L. Blackburn
Gateway	Mayor Andrew Tillman
Gentry	Mayor Kevin Johnston - Vice-Chair
Goshen	Mayor Max Poye
Gravette	Mayor Kurt Maddox
Greenland	Mayor Bill Groom - Chair
Highfill	Cassie Elliot
Hindsville	Mayor X Dotson
Huntsville	Mayor Darrell Trahan
Johnson	Mayor Chris Keeney
Lincoln	Mayor Rob Hulse
Little Flock	Mayor Buddy Blue
Lowell	Mayor Eldon Long, Kris Sullivan
McDonald County. MO	County Commissioner Keith Lindquist
Pea Ridge	Mayor Jackie Crabtree
City of Pineville, MO	Mayor Greg Sweeten, Melissa Ziemianin
Prairie Grove	Mayor Sonny Hudson - Secretary
Rogers	Mayor Greg Hines, Bob Crafton, Nathan Becknell
Siloam Springs	Mayor John Turner, Phillip Patterson
Springdale	Mayor Doug Sprouse, Patsy Christie, Jim Ulmer
Springtown	Mayor Preston Barrett
Sulphur Springs	Mayor Greg Barber
Tontitown	Mayor Paul Colvin, Jr.
Washington County	Judge Joseph K. Wood, Carl Gale
West Fork	Mayor S. Heith Caudle
AHTD – Planning	Jessie Jones
AHTD District 4	Chad Adams
Highway Commission	Dick Trammel, Phillip Taldo
MODOT	Laurel McKean/Frank Miller
Beaver Water District	Alan Fortenberry
Razorback Transit	Gary Smith, Adam Waddell
University of Arkansas	Mike Johnson

Advisory Members:	
Federal Highway Administration	Amy Heflin
Regional Airport Authority	Scott Vanlaningham

Letter from the Chairman

May 2017

Upon being installed as Chair of the Northwest Arkansas Regional Planning Commission, I learned, to my surprise, the Commission has existed for 50 years.

It would be impossible to enumerate how many communities, organizations and individuals have benefited from advice and guidance given by the Commission.

We, as members, should not forget those who founded the Commission, as well as those who were stewards throughout 50 years. They are the foundation of our efforts. The one thing that most of these people share is they were and now are “ahead of their time”.

Please take a few minutes to peruse this Annual Report to learn about five decades of devoted work to make our region a great place to live and work in.

This report summarizes each of the five decades. Take some time to get acquainted with our past. It’s good stuff! Many changes have occurred in that 50 years. And, by the way, an “open space” plan was discussed in 1971!

In closing, I would like to remind all our members what an outstanding staff we have. Every one of them is intelligent, articulate and helpful. They all care about and believe in what they do. These people take on impossible tasks and organize action to make them happen. They manage an unbelievable number of programs simultaneously.

The question that begs for an answer is “what would our two-county region be today without 50 years of planning?”

We are doing good things. Thank you for your cooperative efforts as a region!

Mayor Bill Groom, Greenland
Chair, Northwest Arkansas Regional Planning Commission



1966 - 1975

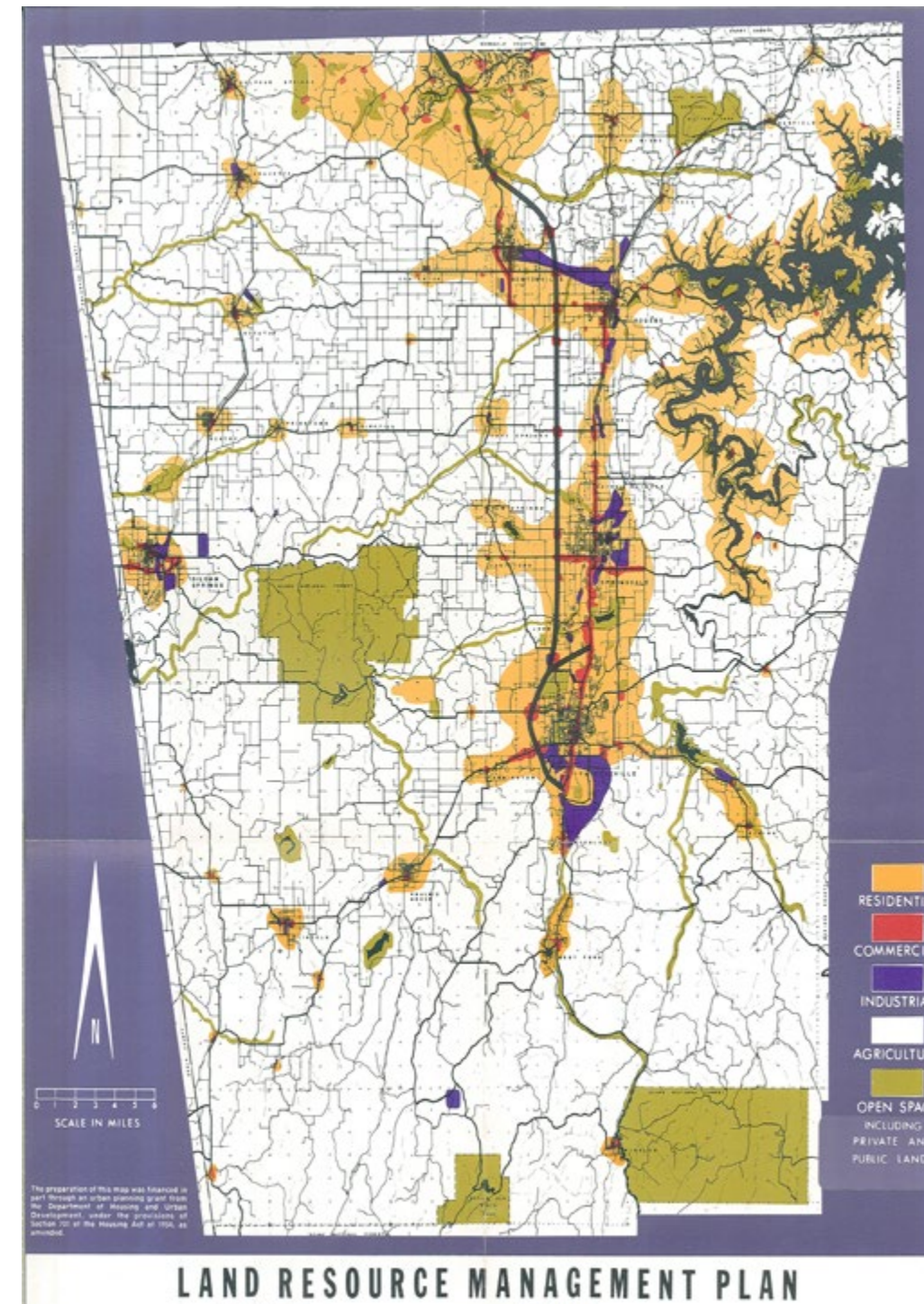
On September 29, 1966 the Northwest Arkansas Regional Planning Commission held its organizational meeting with Fayetteville, Springdale, Rogers, Bentonville, Siloam Springs and Washington and Benton Counties.

Plans and studies:

- 1967 - 1970**
- Study Design Program
 - A Program for Planning 1968-1977 - Ten year planning program for Washington and Benton Counties
 - Short Range Comprehensive Water and Sewer Plans
 - Land Use Mapping
 - Resource Inventory of Northwest Arkansas
 - Open Space and Recreation Study
 - Commercial Land Use Plan
 - Storm Drainage Study
 - Regional Housing Reports
 - Land Resource Management Plan
- 1971 - 1975**
- Short Range Water and Sewer Plan
 - Northwest Arkansas Capital Improvement Programming Study
 - Annual Transportation Report
 - Northwest Arkansas Population Projections 1975-2000
 - Soil Interpretations for Resource Planning and Development
 - The Regional Airport Authority initiative development
 - Various land use and housing studies
 - Upper White River Basin Study
 - Development of the Water Quality Management Program
 - Support of the Traffic Operations Programs to Increase Capacity and Safety (TOPICS)
 - Completing 4-lanes to major portions of Hwy 71
 - County road numbering and signage system implementation

“Northwest Arkansas is relatively undeveloped at this point and can maintain a quality and balanced environment through the adoption and application of regional standards. These standards must be uniformly applied for each development proposal”.

Recommended Land Resource Management Plan - 1973



Transportation

Transportation facilities are among the most critical to be considered in the total development of the region.



“Through the long-range planning program we have developed a vehicle which will allow us to consult, cooperate, and coordinate so that we may continue to lead Arkansas as the most desirable area in which to live, work and play.” Dr. C. Garland Melton Jr., Chairman

1976 - 1985

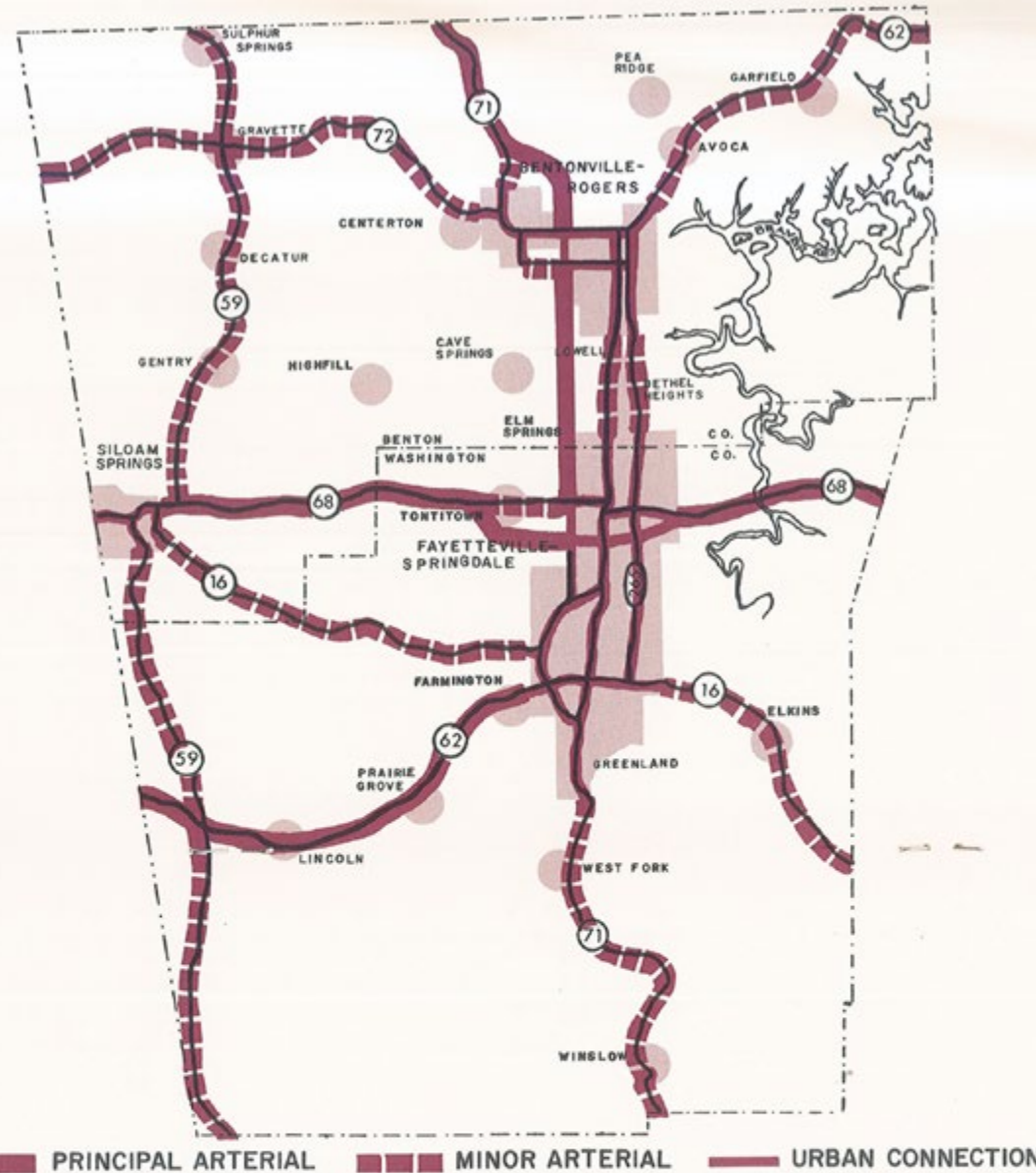
Plans and studies:

1978 - 1981:

- Housing Summary
- Prevention of Adverse Impacts on Endangered, Threatened & Rare Animal Species in Benton and Washington Counties
- Fayetteville Public Parks & Recreational Needs
- Fire Planning/Management Materials
- Transportation Improvement Report (first TIP)
- Land Use Inventory and Update
- Funding for planning for the majority of the local government units
- Planning Area Amendments
- Master Street Plans development
- HUD grants development
- Community Development Grants development
- Solid Waste plan
- Parks and Recreation studies
- Multi-Modal Transportation Projects
- Construction Improvements: Hwy 71, Hwy 62
- Community parking facilities development
- Mapping and graphics development

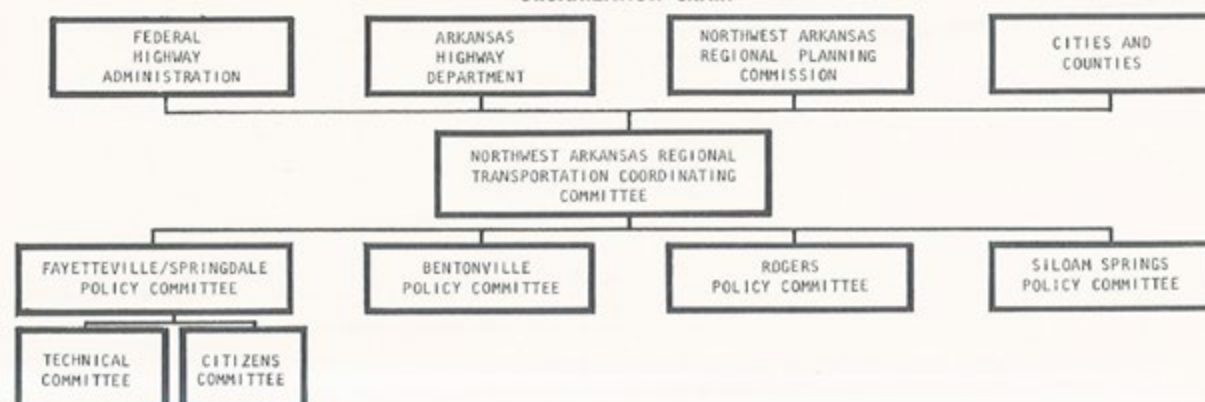
1982 - 1985

- Official Urbanized Area status for Fayetteville/Springdale area by US Department of Commerce, Census Bureau
- Transportation System Management (TSM) Report
- Hwy 71 relocation
- Regional Development Data reports and housing and development reports
- Small Urbanized Area Case Study - planning procedures for small newly urbanized areas
- Urban Transportation Planning Package - tabulation of census data - leading to traffic analysis zones delineation
- Hwy 412 realignment and lanes addition, Improvements on Hwy 112



REGIONAL TRANSPORTATION PLAN

ORGANIZATION CHART



1986 - 1995



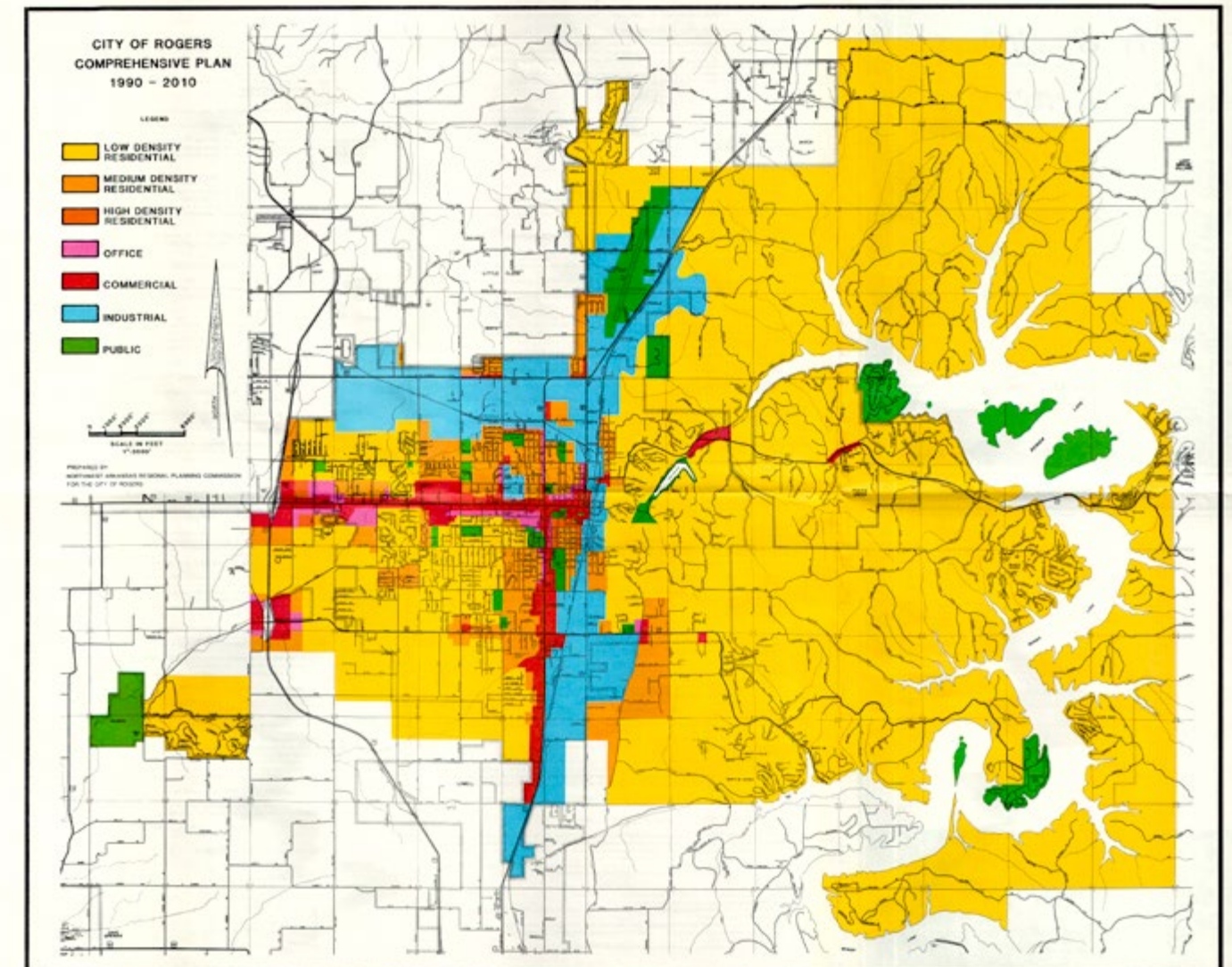
University of Arkansas Campus in the early 1990s

Plans, studies and activities:

1986-1995:

- 2020 Regional Transportation Plan
- Fayetteville Trails Advisory Committee participation
- Assistance with Transportation Enhancement Grants
- Development of the region's first cell tower ordinance
- 1990s Census assistance
- Special Census packages for several communities
- Attended Planning Commission, Planning Board, Subdivision Committee and other land use committees
- Local Land Use Plans
- Comprehensive Plans
- Parks Plans
- Zoning Ordinances
- Subdivision Regulations
- Master Street Planning Area Boundaries
- Data migration to AutoCAD
- Roads functional classification inventory and updates
- Initial 911 addressing for Benton and Washington Counties

During this decade NWARPC provided data, assistance and coordination to the MIS (Major Investment Study) group for developing a feasibility analysis of an E-W corridor for Hwy 412, a N-S corridor east of Hwy 265 from Fayetteville to Rogers, and a western corridor for a bypass of Bella Vista. NWARPC continued to develop the Quarterly Regional Development Data Reports and the Regional Housing Reports. NWARPC worked with Mack Blackwell National Rural Transportation Center at the University of Arkansas in the areas of land use inventory and database support.



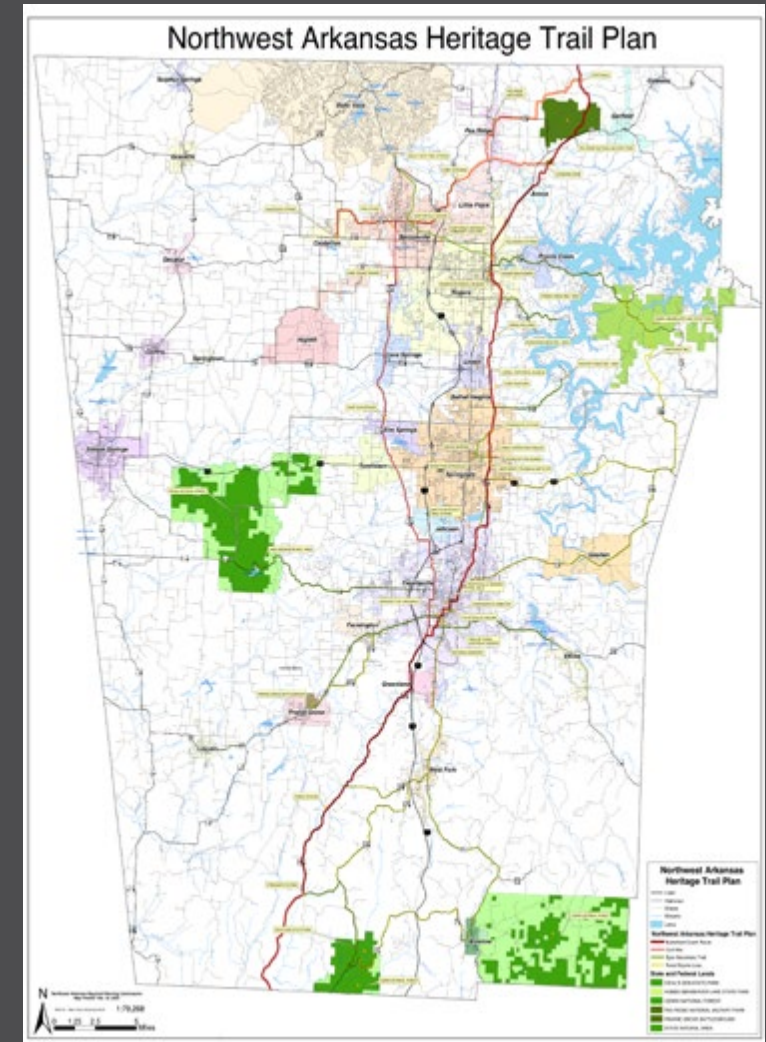


Bobby Hopper Tunnel - Courtesy of Garver Engineering

1996 - 2005

Plans, projects and studies:

- 1996-2000: Bobby Hopper Tunnel on I-540
Trail Advisory Committee meetings
- 2001-2003: NWA Public Transportation Expansion Feasibility Study and Implementation Plan
- 2004-2005: Interstate 540 Improvement Study - Washington and Benton Counties
Northwest Arkansas Regional Development Reports
Northwest Arkansas Travel Demand Model
Northwest Arkansas Heritage Trail Plan



Elkhorn Tavern

2006 - 2015

Plans, projects and studies:

- 2007: NWA Reginal ITS Architecture and Deployment Plan
- 2008: Regional Mobility Authority establishment and staffing
- 2010: I-540 Study and Improvements
NWA Intergovernmental Working Group on Water and Wastewater Discharge Issues
- 2011: Western Beltway Feasibility Study
NWA Transit Development Plan
Transportation Management Area (TMA) Designation for NWARPC
- 2012: Northwest Arkansas Transportation Alternatives Analysis
Northwest Arkansas Travel Demand Model - Transit Component
Northwest Arkansas Heritage Trail Plan
- 2013: Designated Recipient for FTA Programs
- 2014: Bella Vista Bypass construction began
- 2015: Congestion Management Process
NWA Bicycle and Pedestrian Plan
NWA Regional Razorback Greenway planning, design and construction (2012-2015)
Cave Springs Area Karst Resource Conservation Study
- 2016: 2040 Metropolitan Transportation Plan
2016-2020 Transportation Improvement Program (TIP)
Northwest Arkansas Open Space Plan
Hwy 412 Northern Bypass construction began



Razorback Greenway Ground Breaking - 2012



Razorback Greenway Grand Opening - 2015



Don Tyson Interchange (completed in 2014)



Crystal Bridges Museum of American Art (opened in 2011)

Six Livability Principles:

- (1) Provide more transportation choices
- (2) Promote equitable affordable housing
- (3) Enhance economic competitiveness
- (4) Support existing communities
- (5) Coordinate policies and leverage investment
- (6) Value communities and neighborhoods

2016

Many exciting projects and events occurred in 2016 in the region. The following pages feature some of the highlights and accomplishments made possible through the hard work and dedication of the NWA Regional Planning Commission's members.



Puppy Creek Bridge - Hwy. 412 Bypass (Courtesy AHTD)

2016-2020 Transportation Improvement Program (TIP)

The FFY 2016 - 2020 TIP includes all transportation improvements planned or programmed within the MPA that will utilize federal funding for all or part of their implementation costs. The purpose of the TIP is to assist in coordinating the use of these funds for area-wide transportation improvements and to ensure that the projects that are the recipients of these federal funds are in conformance with the 2040 NWA Metropolitan Transportation Plan (MTP) adopted on March 23, 2016.



TIME PERIOD.

This TIP identifies the projects planned and projected from Federal Fiscal Year 2016 through Federal Fiscal Year 2020 (October 1, 2016 to September 30, 2020).

SELECTION PROCESS.

The TIP is consistent with the 2040 Northwest Arkansas Metropolitan Transportation Plan (MTP). Full funding is anticipated to be available for each project within the time period contemplated for completion of the project.

2040 Metropolitan Transportation Plan (MTP)

In March 2016 NWARPC adopted the 2040 MTP in collaboration with the public, the TAC and the RPC/Policy Committee, Arkansas Highway and Transportation Department, Missouri Department of Transportation, Federal Highway Administration, Federal Transit Administration, as well as many organizations, agencies and individual experts. The MTP functions as a framework for continued regional awareness and cooperation between the region's governments. The Plan includes twelve chapters and outlines transportation plans that include roads, active transportation, public transportation, the environment, intermodal, air, freight and rail travel patterns and travel forecasting to the horizon year 2040. The plan can be found on the NWARPC website at nwarpc.org.



"The choices we make today are affecting who we become tomorrow..." Public Comment from the 2040 MTP

The FAST Act and previous transportation authorizations apportion Federal funds for use in specific areas within the State. The Fayetteville, Springdale, Rogers AR-MO Urbanized Area receives funds in the following programs: STBGP GT 200K, TAP Attributable, FTA 5307, and FTA 5339. Projects that utilize these funds are selected by the Northwest Arkansas Regional Planning Commission/Policy Committee.



Gordon Long Park Trailhead Amenities Ribbon Cutting



Northern Bypass- Bridge over I49
(Courtesy AHTD)

FFY 2016 STBGP-A and TAP Projects:

STBGP-A PROJECT	LOCATION	PROJECT TYPE
Bentonville	US 71B (N Walton Blvd) and 12th Street Intersection	Construction (Left-turn lanes on 12th St/Tiger Blvd)
	SW "I" Street and Hwy 102 Intersection	Construction (Right-turn lane southbound on SW "I" St)
Fayetteville	Rupple Road (Starry Nite View to Mt Comfort)	Construction (New location)
Springdale	HWY 265 (Randal Wobbe to Hwy 264)	Construction, ROW and Utilities (five-lane road, traffic signals)
	Don Tyson Parkway Extension (S 56th St to Hwy 112)	Design and Environmental (Extension)
Centerton	Hwy 102 and Seba Road Intersection Improvements	Construction, ROW and Utilities (North and southbound left-turn lane and traffic signal)
Rogers	Walnut Street and Hwy 71B Intersection (Dixieland Rd to 8th St)	Construction, ROW and Utilities (Add two-way center left-turn lane)
Razorback Transit and ORT	Rolling Stock for Public Transit Operations	New Buses (Razorback and ORT)
TAP PROJECT	LOCATION	PROJECT TYPE
Rogers	Razorback Regional Greenway New Hope Road Bridge	New Bike and Pedestrian Bridge
Springdale	Dean's Trail Phase I	12' Shared Use Trail

NWA Bicycle/Pedestrian Master Plan and Active Transportation

The Bike/Ped Plan was adopted in December 2014 when 25 communities in the two-county area adopted individual community plans. In 2016, the City of Avoca joined them in developing their community bicycle and pedestrian draft plan. The draft is expected to be adopted in the spring of 2017.

In 2016, the Catalyst Projects outlined in these plans were given priority and work has started on several projects. Trail marking systems have started to be implemented and a Bike/Ped Safety Group and an Emergency Response Committee have formed to address safety and emergency response on the trail system. Completed projects in 2016 include: Lake Atalanta Park and trail system, Gordon Long trailhead bathroom, Walton Tunnel, Town Branch Trail, Kessler Mountain trail system, Back Forty natural surface trail.



NWA Trails and Bikeways Phone APP was launched



7th International Mountain Biking Association (IMBA) World Summit in Bentonville

NWARPC receives Henry Award for the Razorback Greenway Governor's Tourism Conference

Outsideonline.com ranked Bentonville as second best travel destination

More information about the Bicycle and Pedestrian program at nwarpc.org



Interactive map: <https://trails.cast.uark.edu>

BIKE NWA PILOT PROJECTS

Sponsored by the Walton Family Foundation, Bike NWA was a series of month-long demonstration projects implemented by the Northwest Arkansas Regional Planning Commission, the Bicycle Coalition of the Ozarks, and three cities in Northwest Arkansas: Bella Vista, Bentonville, and Rogers.



NWA Regional Razorback Greenway

Saturday May 14, 2016 marked the one-year anniversary of the Razorback Greenway with a full day of events and activities at locations along the Greenway and a Square to Square bike ride (Fayetteville Square to Bentonville Square). Thousands of people participated in the celebration as part of the Northwest Arkansas Artosphere Festival and enjoyed a day full of sunshine, music, food and an overall good outdoors time. In 2016 the mile markers project was completed (thirty eight mile markers were installed on the Greenway) and the thermo signs were also installed. A new trailhead was completed in Johnson and the Gordon Long trailhead bathroom was also completed. New paper maps of the Greenway were developed and made available to the public.



NWA Open Space Plan

The Northwest Arkansas Open Space Plan was adopted by the Northwest Arkansas Regional Planning Commission in January 2016.

After the adoption of the NWA Open Space Plan, NWARPC took the lead in forming and leading the NWA Open Space Committee and the following sub-committees:

- » Framework
- » Outreach
- » Education
- » Funding
- » Priorities Properties.

In addition to maintaining the Open Space website at <http://www.nwaopenspace.com/>, NWARPC developed an interactive map of the Open Space results.

More information can be found at: nwarpc.org/environment



Dr. Delia Haak, Illinois Watershed Conservation Partnership at the Cave Springs Watershed Sanctuary Center



Beaver Lake

Stormwater Management

Since 2004, the NWA Municipal Separate Storm Sewer System (MS4s), currently involving 22 jurisdictions, have contracted jointly with the NWARPC and the University of Arkansas Cooperative Extension Service (UACES) to provide the NWA Stormwater Education Program. The NWARPC plays a key role in administering the contract and coordinating regular meetings of the MS4 Stormwater Compliance Group (SCG). The SCG, composed of the local MS4 representatives, the UACES and NWARPC staff meet monthly to discuss regional coordination of stormwater protection efforts, local stormwater education program needs and accomplishments, target audiences, program methods, and provide annual input and evaluations.

The Education Program began in 2016 with a NWA Stormwater Forum for MS4 elected officials and staff. This event served as a reminder to elected officials of the importance of stormwater runoff management and the need to continue to develop individual stormwater programs. 2016 also saw increased public awareness and understanding of stormwater runoff through a stepped-up presence in mass media and outreach. Examples of this effort include: numerous newspaper articles, television PSAs, month-long segments on local radio programs, to-the-trade newsletter features, Facebook, Instagram and Twitter pages.



The Education Program also included a broader public presence at events such as:

- » Artosphere Trail Mix
- » Local farmers' markets
- » County fairs
- » Secchi Day on Beaver Lake, and
- » Bats and Bluegrass Festival.

The Education Program also partnered with private industry to spread the stormwater message. One such program involved the Boomerang Car Wash. The public took selfies while getting their car washed in the Boomerang Car Wash, posted the picture on Facebook and were entered into a sweepstakes to win free car washes for a year.

Numerous workshops were held throughout the year including rain barrel building and the popular "Blue Pathways" series of workshops promoting rainwater harvesting and low impact landscaping designs. Another popular outreach and education tool was the UpStream Art program which now includes 50 painted storm drain inlet structures. Additionally, the Education Program reached numerous youth and adult audiences, as well as conducting construction industry and MS4 employee training.

NWARPC continues the work of assisting the NWA MS4s in the development of their stormwater management programs as well as the education of the public at large on the importance of stormwater runoff management.





Public Transportation

NWARPC is providing support to two public transit providers that currently operate in the urban and rural areas of the region and include Ozark Regional Transit, Inc. (ORT) and University of Arkansas Razorback Transit.

Razorback Transit

In 2016 Razorback Transit had a fleet of 25 buses and 6 paratransit vans.

Razorback Transit provides fare-free transportation to on-campus locations and major off-campus living and shopping areas from 7:00 AM to 6:00 PM, Monday through Friday on 10 Fixed Routes during the Fall and Spring semesters.

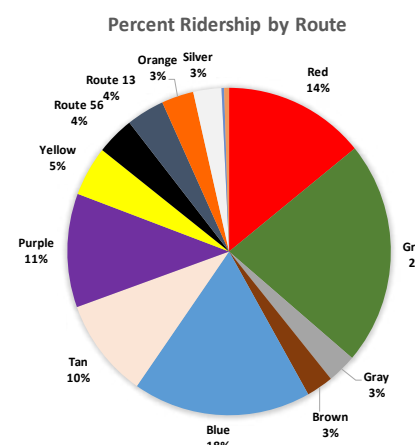
Reduced service is provided from 6:00 PM to 10:30 PM, Monday through Friday and 7:00 AM to 10:30 PM on Saturdays during the Fall and Spring semesters.

Complimentary paratransit service is provided during the same hours as fixed route service.

Approximately 21% of the total fixed route ridership was generated by non-students in 2016.

The total ridership for Razorback Transit in 2016 was 1,769,495. There were approximately 18,364 bicycles transported on buses in 2016.

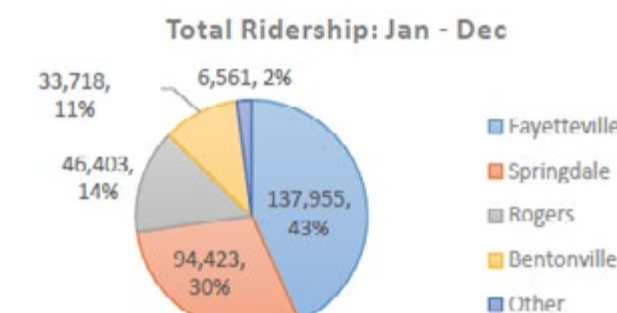
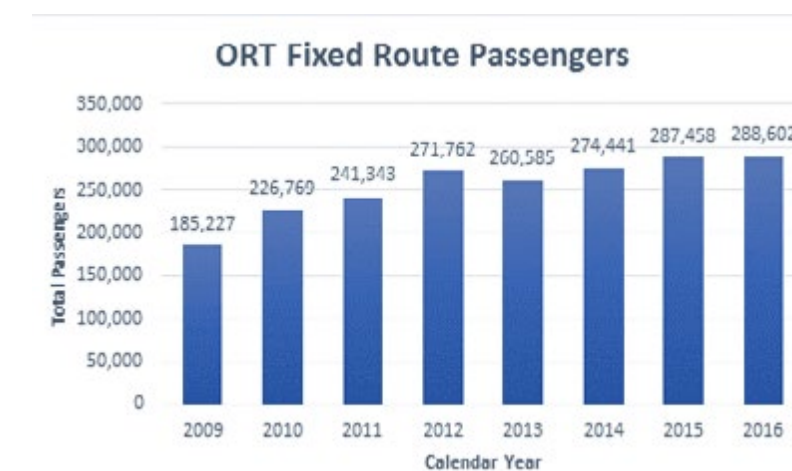
Route:	Ridership:
Red	254,274
Green	396,847
Gray	52,335
Brown	48,329
Blue	319,543
Tan	176,597
Purple	201,825
Yellow	88,297
Route 56	67,870
Route 13	68,296
Orange	57,601
Silver	50,543
Gold	4,708
PT Van	8,767
Total:	1,769,495



Ozark Regional Transit, Inc. (ORT)

In 2016 ORT traveled 1,402,609 miles and carried 337,360 passengers, including charters.

During the year, ORT operated 14 Fixed Routes with 15 buses and 11 paratransit routes. The number of passengers on the Fixed Routes was 288,602, a 0.4% increase compared to the previous year. The number of paratransit passengers was 30,458, an increase of 1.6% compared to 2015.



ORT Operates the Following Fixed Routes in Northwest Arkansas:

- » In Fayetteville: Routes 1, 2, 3, 4
- » In Springdale: Routes 61, 62, 63, 64, 65
- » In Rogers: Routes 51, 52, 53
- » In Bentonville: Route 11
- » I-49 Commuter Express: Route 490

ORT Operates the Following Paratransit Routes in Northwest Arkansas:

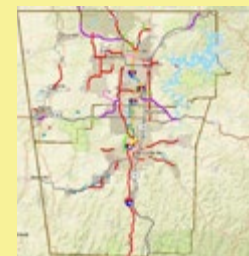
- » Demand Response Routes usually in Rural Areas: DR1, DR3
- » Demand Response Routes usually in Carroll County: DR2, CC
- » Mostly ADA Paratransit Routes in the Urban Areas: PT1-PT7

GIS and Mapping

NWARPC continues to provide mapping and GIS assistance to its members and maintains county and regional maps. Staff continues to update map information for cities and counties throughout the Northwest Arkansas region, as well as the transit agencies.

- » Assisted in municipal annexation analysis, creation, and descriptions.
- » Produced cartographic products and interactive maps that were published on the newly upgraded nwarpc.org website.
- » Continued to lead the Northwest Arkansas GIS Users Forum and organized regular meetings for the GIS professionals in the region.
- » Received and distributed the newly acquired Lidar data and products for Benton County as part of the USGS 3DEP program.
- » Contracted for the development of 1 foot contours data based on the Lidar data for Washington County and the urban areas of Benton County.
- » Continued to support the annual high resolution aerial photography acquisition project for both Benton and Washington Counties.
- » Continued to provide access for its members to online imagery through the subscription to the Pictometry Connect online account.
- » Organized and assisted the Pictometry training session.

Interactive maps at
nwarpc.org/interactive-gis-maps/



TRANSPORTATION PROJECTS MAPS
Displays the TIP, 2040 MTP, TAP and ALOP



ENVIRONMENTAL MAP
Includes environmental data of Northwest Arkansas (watersheds, karst sensitivity areas, etc.)



BENTON AND WASHINGTON COUNTY MAP
Basic geographic information and political boundaries for Benton and Washington Counties

Travel Demand Model Forecasting

The NWA travel forecasting model is continuously being improved and was used during the 2040 MTP and TIP planning effort. The transit component has been upgraded and new validation and calibration work has been performed.

- » Utilized the Travel Demand Forecasting Model to refine and prioritize the regional arterial network.
- » Assisted various cities and consultants by running travel demand model scenarios and provided the requested information derived from model runs.
- » Staff continued to disseminate model based counts for various future road projects.
- » Utilized the Travel Demand Model to assist both transit agencies with route optimization.
- » Additional tasks leading to improvement of the transit component of the Travel Demand Model were completed during 2016.



New NWARPC Website



In 2016 NWARPC completed and launched a newly improved website.

The new website has improved functionality, new look, better organization of the information and features, and a Data Catalog which includes documents, maps and interactive maps organized by topic.

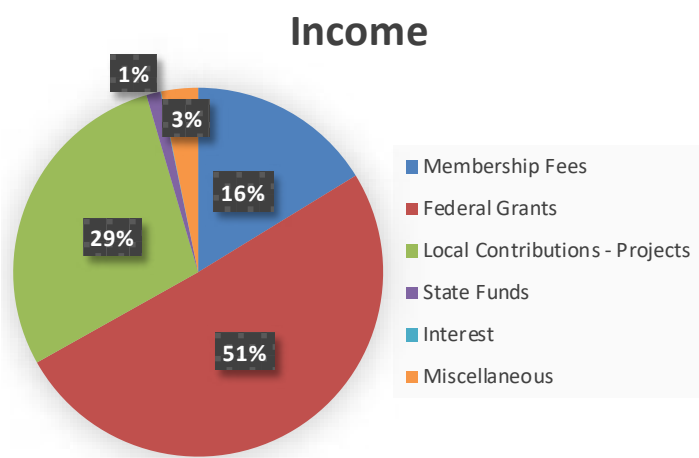
The website is also integrated with social media, email updates, calendar for meetings and events, and is mobile friendly.



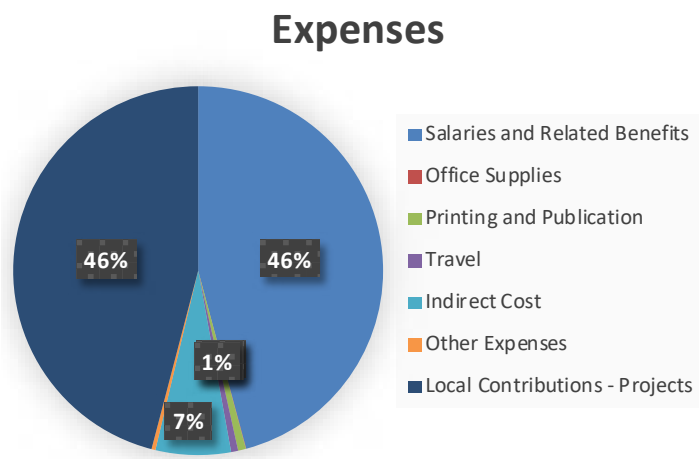
<http://nwarpc.org>

Revenue Income and Expenses Summary for the Fiscal Year 2016 (July 1, 2015 to June 30, 2016)

Financial Report



Income	Amount
Membership Fees	\$295,209
Federal Grants	\$920,886
Loc. Con. Projects	\$520,882
State Funds	\$22,500
Interest	\$1,156
Miscellaneous	\$58,487
Total	\$1,819,120



Expenses	Amount
Salaries	\$775,281
Office Supplies	\$580
Printing and Publ.	\$11,472
Travel	\$10,445
Indirect Cost	\$111,253
Other Expenses	\$5,827
Loc.Con. Projects	\$777,363
Total	\$1,692,221

Clearinghouse Reviews

NWARPC is the federally designated regional clearinghouse for Northwest Arkansas region.

The purpose of this designation, which is made pursuant to Executive Order 12372, is to insure that requests for federal funding are reviewed to determine compatibility with local and regional plans, and that such funding will not be used for duplicative purposes.

In 2016, federal-aid grants with a total value of \$74 million were submitted and were cleared in order to insure that proposed uses were consistent with, and in furtherance of, the goals, objectives and planned development for the region.

Conferences, Workshops, and Training

Sessions attended by Staff in 2016

March 10-11	Arkansas Chapter American Planning Association (APA) Spring Conference in Conway, AR.
March 31	Transportation Alternatives Program (TAP) training workshop presented by AHTD in Little Rock, AR.
April 13	Spring GIS meeting in Little Rock, AR.
April 27	2016 Road Conference on Pavement Management offered by Center for Training Transportation Professionals (CTTP) at the University of Arkansas Fayetteville campus.
May 18-20	National Highway Institute (NWI) Training on Performance Measures and Safety Target Setting sponsored by MoDOT in Jefferson City, MO.
June 15-17	Arkansas Municipal League Conference in Little Rock, AR.
August 17-18	Transit Asset Management MoDOT Conference, Kansas City, MO.
August 24-25	FHWA Transportation Performance Management (TPM) Capacity Building Program Workshop sponsored by MoDOT in Jefferson City, MO.
December 1-2	Federal Transit Administration (FTA) Triennial Review Workshop in Fayetteville, AR.

Recognition

Since 1973, Donna Lange has been a loyal employee of NWARPC and we are taking this opportunity to recognize her contribution to not only the well-being of the organization, but to the NWA region in general. When asked, Donna stated that “because of having wonderful coworkers and the best bosses in Ken Riley, Larry Wood and Jeff Hawkins, the Regional Planning Commission has been a very pleasurable place to work for 44 years”. Donna began working for NWARPC as a secretary/receptionist. During her career, Donna typed all office reports and managed the office books by hand, until the office administrative duties were computerized making her job a little easier. On top of Donna’s regular duties as office manager, bookkeeper, payroll and answering the phone, she administered the financial coordination of the very successful 2006 EPA Region 6 MS4 Stormwater Conference and recently maintained the NWA Razorback Regional Greenway financial records.



During her 44 years, Donna has seen the changes that NWARPC and the region have experienced and has met and worked with countless local and state officials, consultants and citizens ensuring that the mission of NWARPC has endured throughout the years.

A warm shout-out to Donna with the hope she will continue to work and support NWARPC and for being the cheerful and dedicated employee everyone knows and appreciates.

Thank You, Donna!!

NWARPC Staff:

Jeff Hawkins - Executive Director
Tim Conklin, AICP - Assistant Director/NARTS Study Director
Donna Lange - Office Manager
Celia Scott-Silkwood, AICP - Regional Planner
Cristina Scarlat - GIS Coordinator/ Travel Demand Modeler
Elizabeth Bowen - Project Manager
Stephanie Shaw - Transportation GIS Analyst
Brandon Ives - IT/GIS Analyst

Northwest Arkansas Regional
Planning Commission

1311 Clayton St., Springdale, AR 72762
Tel: 479-751-7125 Fax: 479-751-7150
<http://nwarpc.org> | f@rpcnwa

