

ANNUAL REPORT

2015

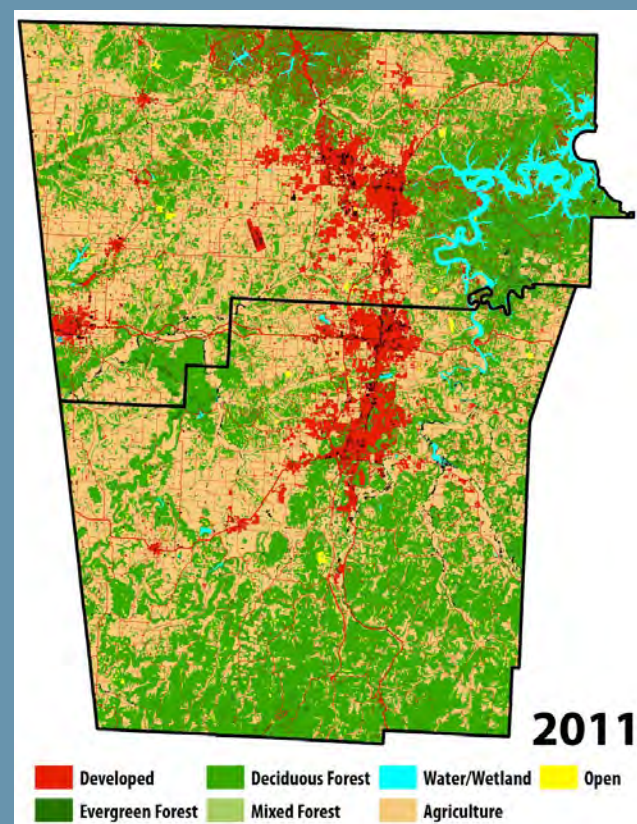
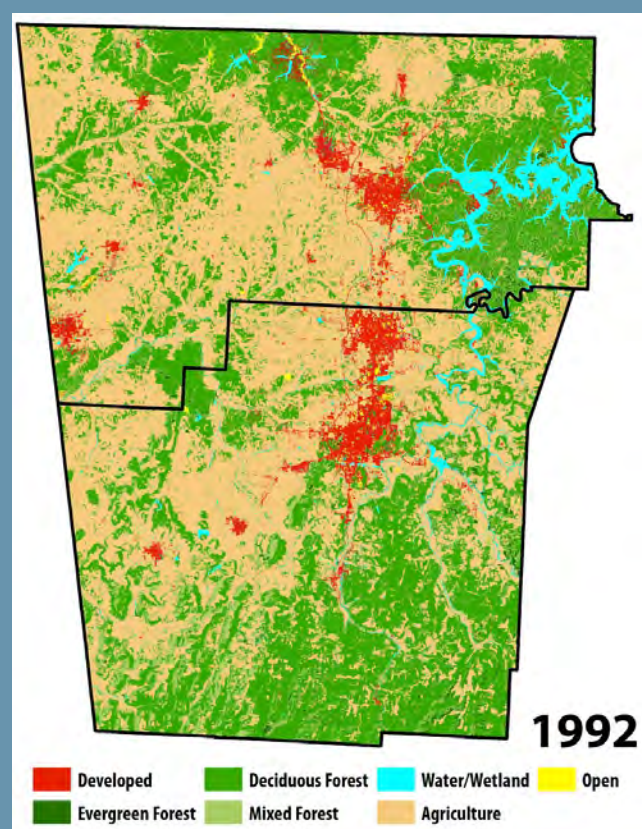
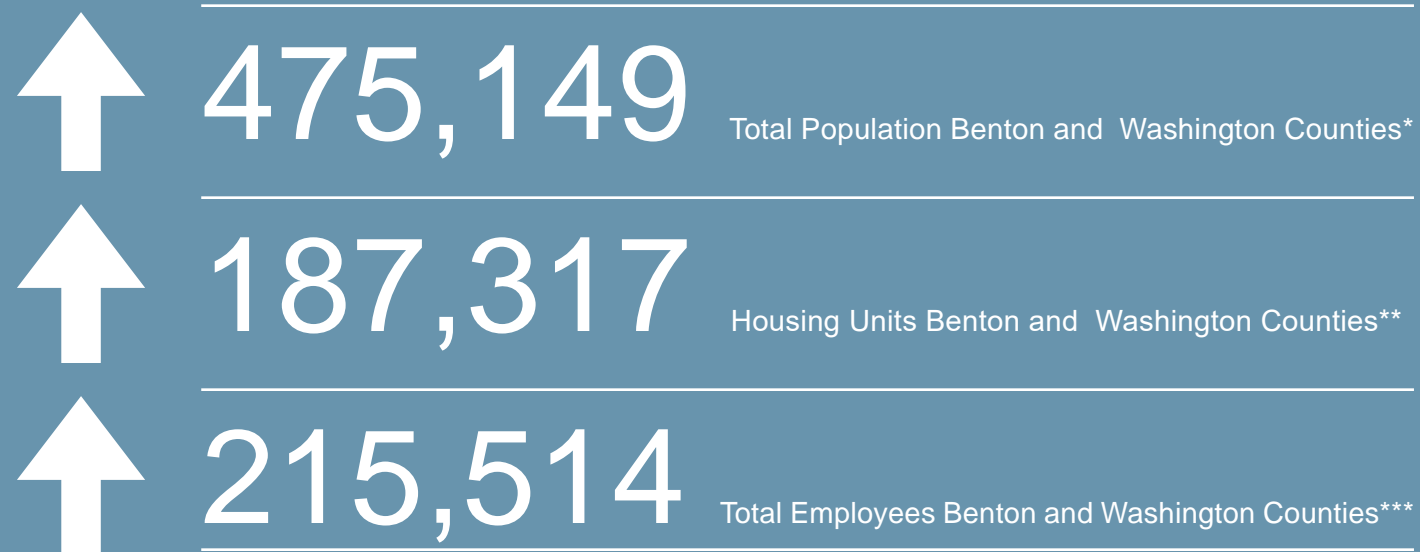
Northwest Arkansas Regional Planning Commission



This report was funded in part through grants from the Federal Highway Administration (FHWA), Federal Transit Administration (FTA), and the U.S. Department of Transportation (U.S.DOT). The views and opinions of the Northwest Arkansas Regional Planning Commission (NWARPC) expressed herein do not necessarily state or reflect those of the U.S. Department of Transportation.

Published May 2016





Northwest Arkansas Growth

Annual Letter

I am pleased to present the Northwest Arkansas Regional Planning Commission 2015 Annual Report.

Our organization continues to provide leadership and vision for issues of regional significance, and strives to serve as a model for the cooperative spirit that drives our region's advancement.

Increasingly, quality of life, infrastructure, and economic development issues are transcending individual jurisdictional boundaries. As such, it is more important now than ever that local governments work together regionally to address the problems and meet the challenges confronting our rapidly growing region. Regional cooperation is key, and the involvement and participation of all is imperative.

As our region continues to develop and population continues to grow at a steady pace, we continue to face the challenges posed by the demand for services and the expansion of improved and diverse transportation facilities. Given upcoming challenges, our Commission will remain committed to the partnership that defines us as an organization and region. With continued hard work and diligence, and with the support of our members, we will stand together and find the best solutions to ensure a bright future and opportunities for all our citizens.

Thank you for your participation in, and support of, Commission efforts and initiatives.



Jeff Hawkins
Executive Director

“Our organization continues to provide leadership and vision for issues of regional significance, and strives to serve as a model for the cooperative spirit that drives our region's advancement.”

* American Community Survey July 1 2015 Estimates
 ** American Community Survey July 1 2014 Estimates
 ***InfoUSA - 2015 Data

About NWARPC

As the Metropolitan Planning Organization, the NWARPC provides the framework for joint cooperation and decision-making in the planning and prioritization of transportation system improvements. A Technical Advisory Committee (TAC), consisting principally of professionals associated with various aspects of transportation, is charged with developing the technical aspects of plans and reports, and makes recommendations to the NWARPC/Policy Committee. All planning is carried out through the 3C approach – Cooperative, Continuing, and Comprehensive – with planning partners AHTD, MODOT, and other public transportation providers.

The Northwest Arkansas Regional Planning Commission (NWARPC) was formed in 1966 through a cooperative agreement between Benton County, Washington County, and the cities of Bentonville, Fayetteville, Rogers, Siloam Springs, and Springdale. In 1983, NWARPC was designated as the Metropolitan Planning Organization (MPO) under U.S. DOT regulations for transportation planning purposes. The MPO is designated by the Governors of Arkansas and Missouri to conduct the federally mandated 3C (Comprehensive, Continuing and Cooperative) planning process necessary for transportation projects to qualify for federal transportation funds.

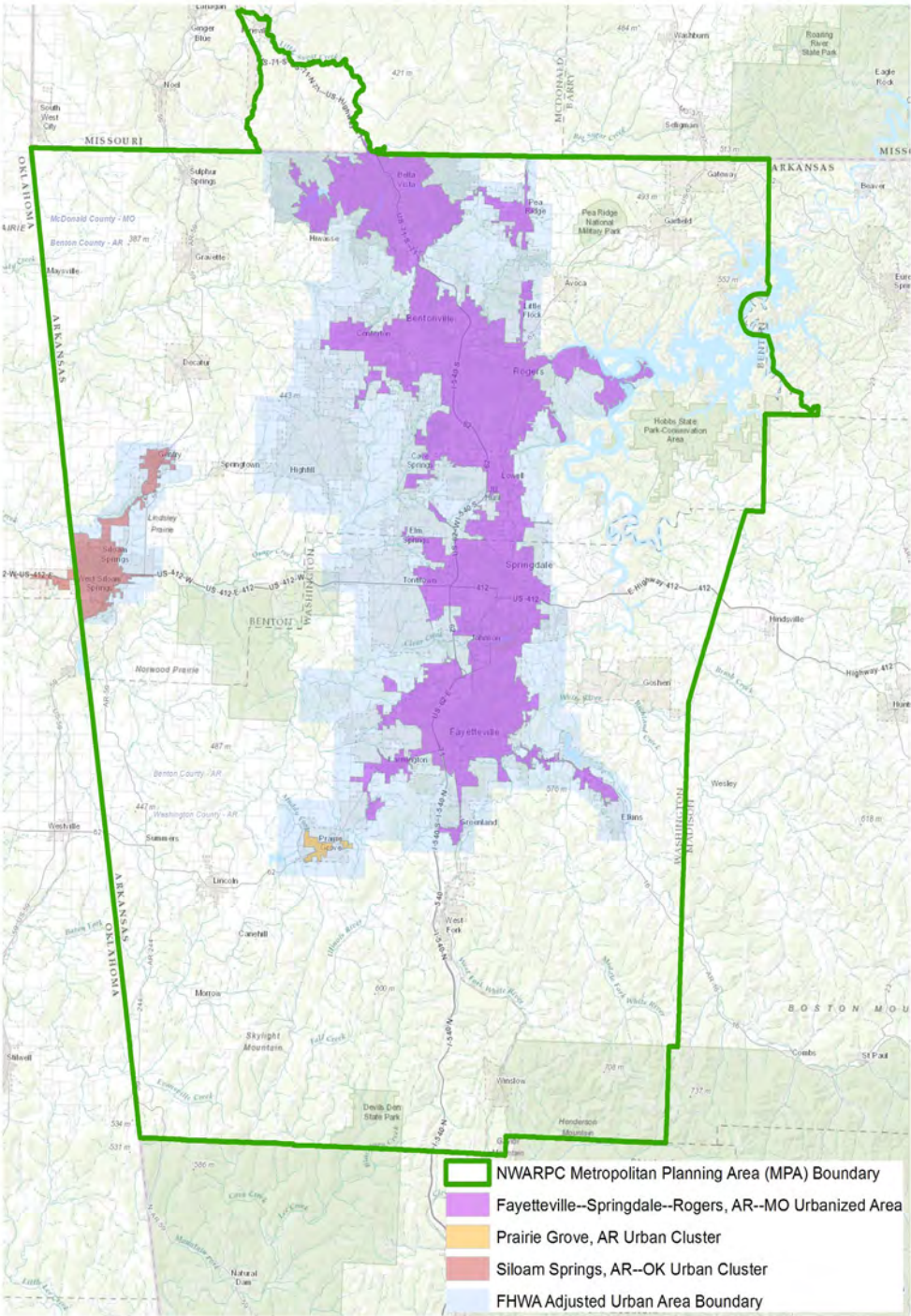
Transportation Management Area (TMA) status was recognized after 2010 Census Bureau data indicated the Fayetteville-Springdale-Rogers, AR-MO Urbanized Area (UZA) had grown from 172,585 in 2000 to 295,083 in 2010. The 200,000 population mark is the threshold for an area to become a TMA. With the new UZA boundary extending into Missouri, the Metropolitan

Planning Area (MPA) for transportation planning now extends into McDonald County, Missouri. Today, NWARPC's membership includes 35 units of government in Benton, Madison, and Washington Counties, Arkansas; McDonald County and Pineville, Missouri; the Arkansas State Highway and Transportation Department (AHTD); the Missouri Department of Transportation (MoDOT); transit agencies; and Beaver Water District.

The MPO has six permanent committees, the Regional Planning Commission/Policy Committee (RPC/Policy Committee), the Technical Advisory Committee (TAC), the Active Transportation Committee (ACT), the Open Space Committee, the Northwest Arkansas GIS Users Group and the Management and Operations Committee (M&O). The RPC/Policy Committee is the chief decision-making body for the MPO and consists of the jurisdictions' chief elected official and/or other appointed representatives. The TAC develops the technical aspects of plans and reports

and makes recommendations to the RPC/Policy Committee, the Act and M&O Committees develop the technical aspects of plans and reports and makes recommendations to the TAC. The NWARPC is a multi-modal transportation planning agency for the region.

The NWARPC has created many plans and programs including the NWA 2040 Metropolitan Transportation Plan, the Transportation Improvement Program (TIP), the Cave Springs Area Karst Resource Conservation Study, the Congestion Management Process, the Intelligent Transportation System Architecture and Deployment Plan, the NWA Transportation Alternatives Analysis, the NWA Regional Bicycle and Pedestrian Master Plan, and the NWA Open Space Plan. Additionally, the NWARPC initiated a 5 E's summit that was held in October 2015, and made application for the region for the Bicycle Friendly Community Award in which Benton and Washington Counties received the Bronze level award.

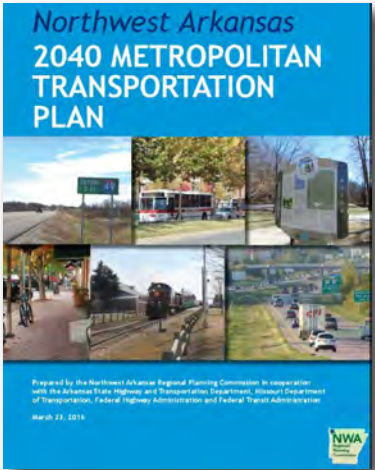


Metropolitan Planning Area

The NWARPC supported the development of the Razorback Regional Greenway by applying for and administering the TIGER II grant portion of the Greenway.

The NWARPC obtained a grant from the Walton Family Foundation to hire a consultant to create the NWA Regional Bicycle and Pedestrian Master Plan for the Region. The Plan called for 20 catalyst projects to be implemented which included 17 infrastructure projects and 3 non-infrastructure projects. One of the catalyst projects provides non-motorized transportation training for engineers and planners. NWARPC is the agency that will coordinate the regional training sessions.

Northwest Arkansas 2040 Metropolitan Transportation Plan



In 2015, NWARPC continued development of the 2040 MTP in collaboration with the public, the TAC and the RPC/Policy Committee, as well as many organizations, agencies and individual experts. The MTP functions as a framework for continued regional awareness and cooperation between the region’s governments. The fact that in the past 20 years five long-range transportation plans have been developed and adopted by the RPC/Policy Committee is evidence that area governments are committed to approaching transportation challenges in Northwest Arkansas on a united front.

The 2040 MTP Community Outreach Plan (COP) was developed to guide the community outreach efforts throughout the development of the MTP. **Over 2,700 individuals attended over 70 community outreach activities and over 60 articles and photos concerning area transportation issues and the MTP were published.** The TAC and RPC/Policy Committee were continually updated on the development process and they provided valuable guidance throughout the process.



The 2040 MTP Public Opinion Survey and the Online Input Map were made available between September 11, 2014 and October 1, 2015 with links to the online versions from the NWARPC website and Facebook page, as well as emails, media and newspaper articles. A paper copy of the survey was also made available at open houses, public input meetings and presentations. **Both the online and paper surveys were published in both English and Spanish, with 444 English surveys and seven Spanish surveys received.** The comments received through the surveys and other community outreach efforts helped shape the goals and objectives for the 2040 MTP.

The President signed into law the Fixing America’s Surface Transportation (FAST Act) in December 2015, continuing national goals and objectives set out in Moving Ahead for Progress in the 21st Century (MAP-21). The 2040 MTP framework was developed around national goals, state goals and MTP goals.

The 2040 MTP recommends several methods to accomplish these goals, such as:

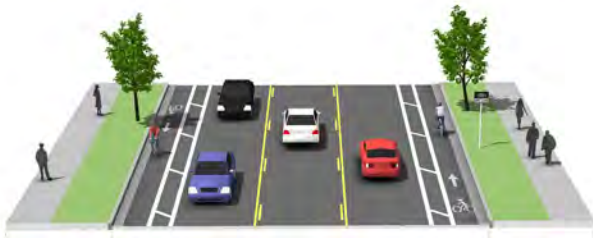
- Access Management
- Context Sensitive Solutions
- Congestion and Transportation Demand Management
- Transit Oriented Development
- Intelligent Transportation Systems
- Complete Streets



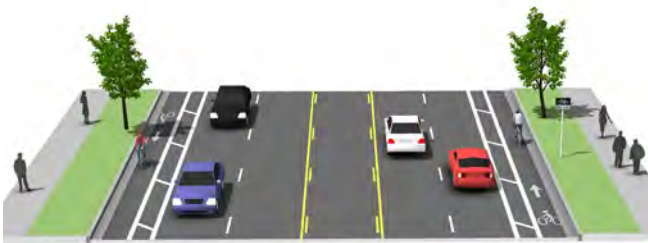
Minor Street



Collector Street



Minor Arterial



Major Arterial

Complete Streets Design



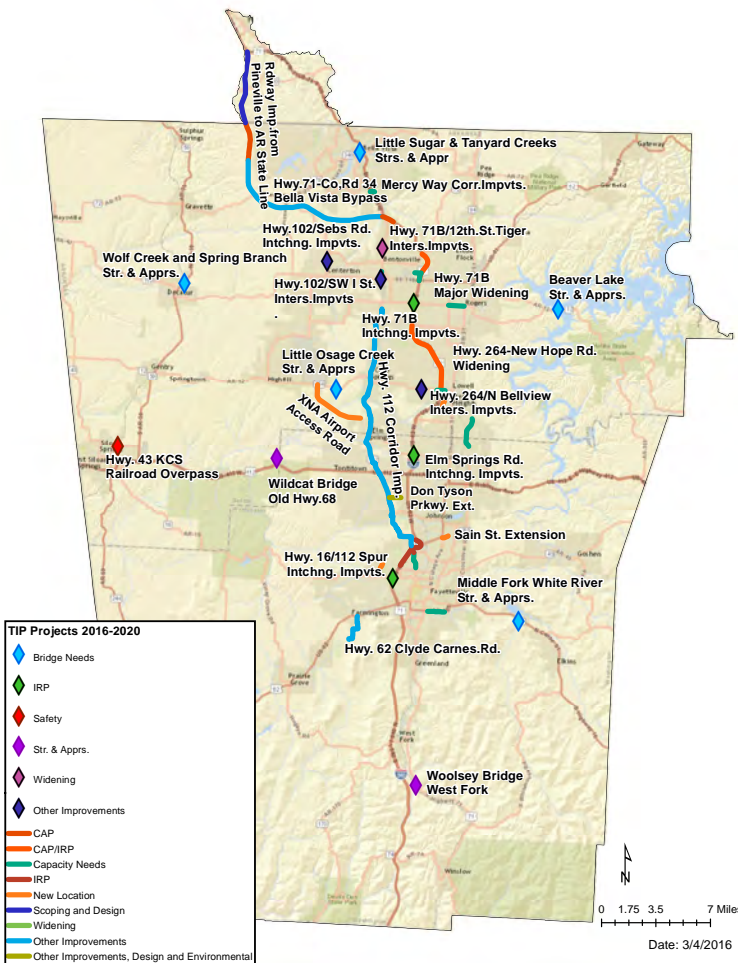
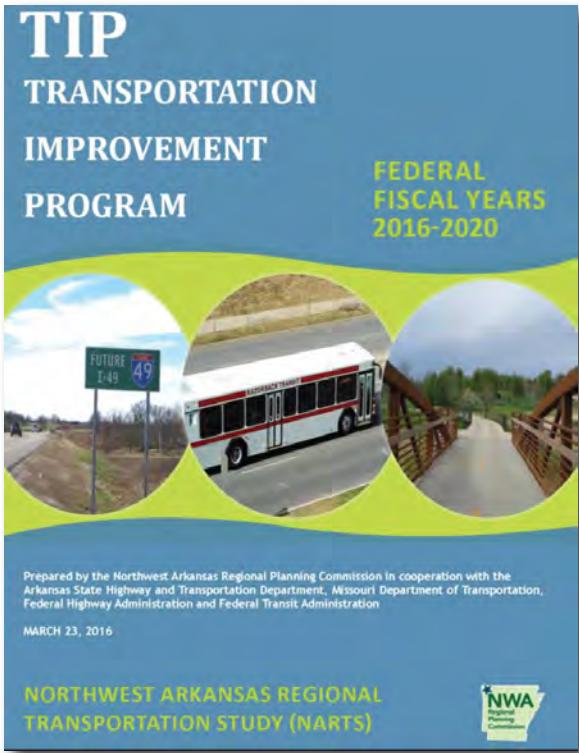
Chapters in the 2040 MTP include:

- Travel Patterns and Travel Forecasting
- Streets and Highways
- Transportation Facility Design, Management and Operations, and System Performance
- Bicycle and Pedestrian Facilities
- Public Transportation
- The Environment

TIP Development

The FFY 2016 - 2020 TIP includes all transportation improvements planned or programmed within the MPA that will utilize federal funding for all or part of their implementation costs. The purpose of the TIP is to assist in coordinating the use of these funds for area-wide transportation improvements and to ensure that the projects that are the recipients of these federal funds are in conformance with the 2040 NWA Metropolitan Transportation Plan (MTP) adopted on March 23, 2016.

The projects that are contained in the FFY 2016 - 2020 TIP have been selected by and coordinated with local units of governments within the MPA and with AHTD and MoDOT. They have been reviewed for consistency with the 2040 MTP, responsiveness to local and regional needs, and for the availability of federal funds and non-federal matching funds.



FFY 2016-2020 TIP Projects Map

STP-A and TAP Projects

In Federal Fiscal Year (FFY) 2015 the Surface Transportation Program – Attributable (STP-A) and Transportation Alternatives Program (TAP) funds for projects selected by the NWARPC are listed below. More than 6 million dollars in federal funds were obligated within the region in FFY 2015.

Job. No.	Jurisdiction	Project	Project Type	STP- A Obligated	TAP Obligated
090218	Bentonville	8 th Street	Right-of Way, Utilities, Construction	\$4,060,686	
040688	Fayetteville	Sain Street	Design and Environmental	\$320,000	
040683	Farmington	Hwy.170	Design and Environmental	\$520,000	
090448	Rogers	AR 94/A&M/ Easy Street	Railroad Gates with Ped. Improvements	\$596,351	
090440	Rogers	Hwy.62 Int. Safety	Study	\$40,000	
040447	Rogers	Dixieland Road& A&M RR	Railroad Gates with Ped. Improvements	\$420,000	
090439	Rogers	Razorback Greenway New Hope Bridge	Construction		\$220,199
040673	Fayetteville	Gordon Long Trail	Construction		\$260,000
TOTAL				\$5,957,037	\$480,199



Don Tyson Interchange



Fayetteville Flyover



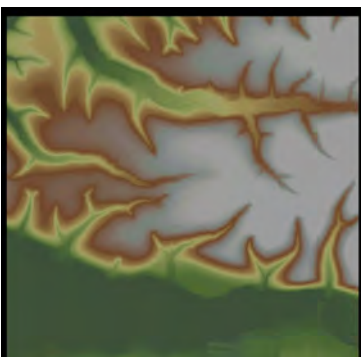
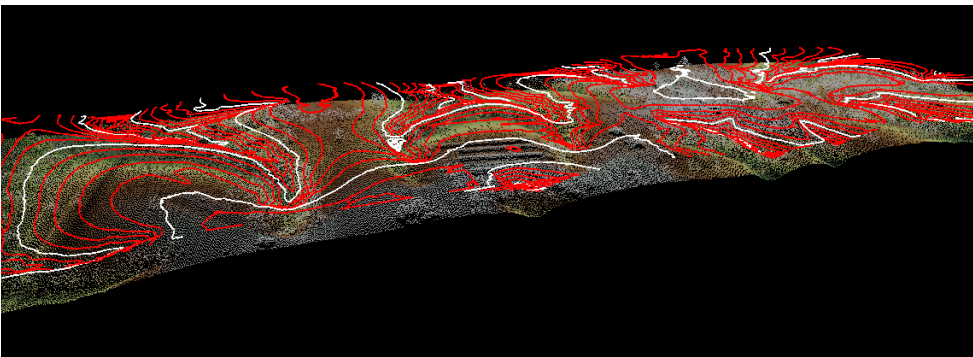
Hwy. 265 in Fayetteville

GIS and Mapping

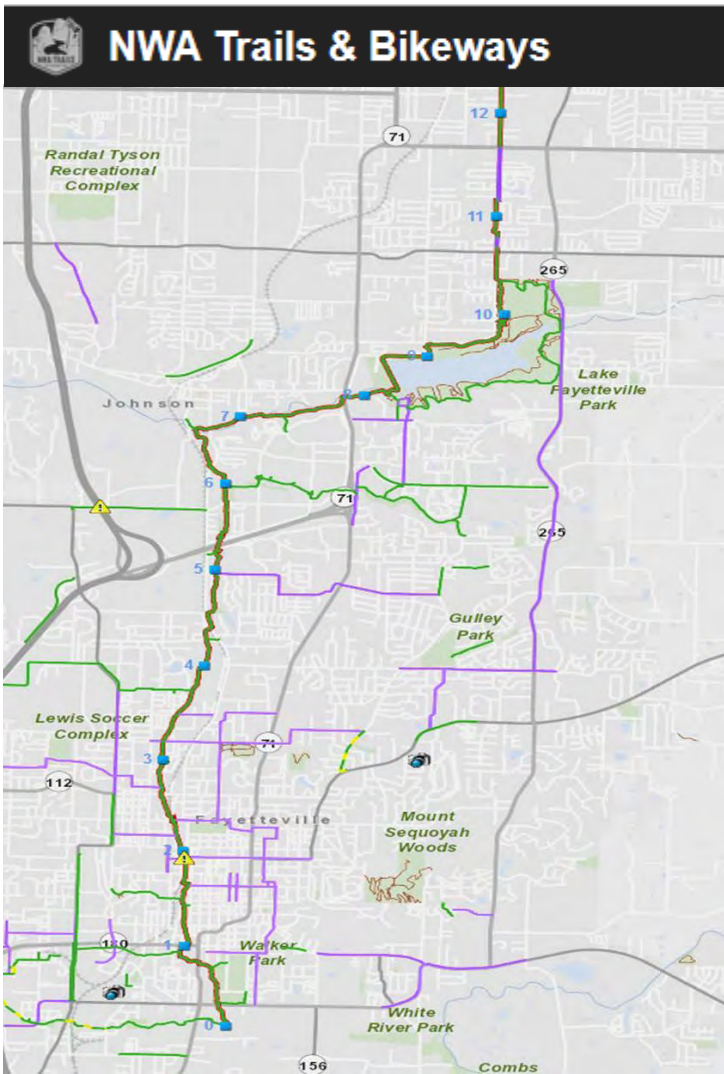
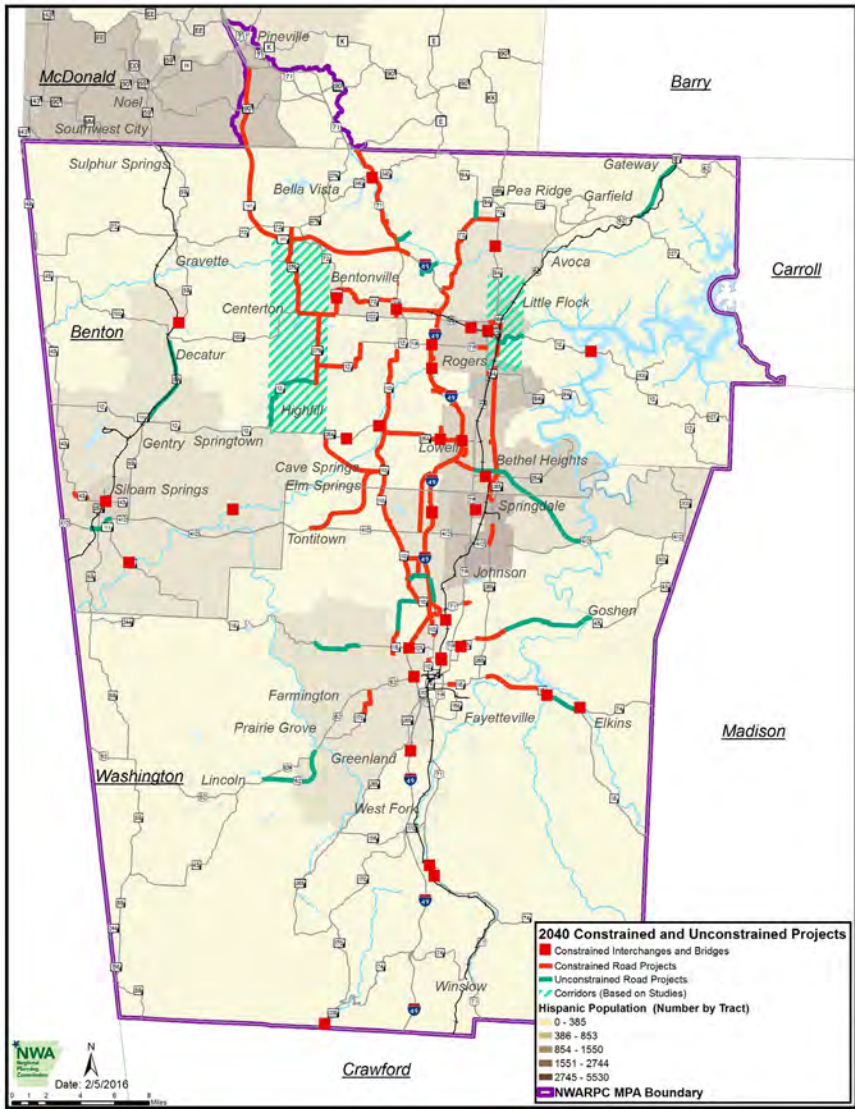
NWARPC continued to provide assistance to its members and the general public in mapping and GIS and supported a variety of projects, from transportation to environmental and demographic analysis.

Notable Accomplishments

- Updated planning documents, subdivision regulations, and zoning ordinances and maps.
- Updated city master street plans, territorial jurisdictions, and comprehensive land-use plans.
- Updated the regional roads functional classification map (approved in 2015).
- Assisted in municipal annexation analysis, creation, and descriptions.
- Produced cartographic products and online maps and results of GIS analysis for the TIP and the MTP.
- Continued to lead the Northwest Arkansas GIS Users Forum and organized regular meetings for the GIS professionals in the region.
- Obtained funding from the USGS 3DEP program to acquire high resolution (QL2) Lidar data and products for Benton County.
- Continued to support the annual high resolution aerial photography acquisition project for both Benton and Washington counties.
- Continued to provide access for its members to online imagery through the subscription to the Pictometry Connect online account.
- Received a GIS grant from the Walton Family Foundation for hardware and additional GIS software for the development of a regional GIS system.



Visualizing Lidar Data (Washington County)



NWA Trails & Bikeways Online Map
<https://trails.cast.uark.edu/>



NWARPC is continuously striving to improve its GIS performance and capacity, provide coordination to the GIS community in the region and collaborate with its jurisdiction members, while providing support for the general public.

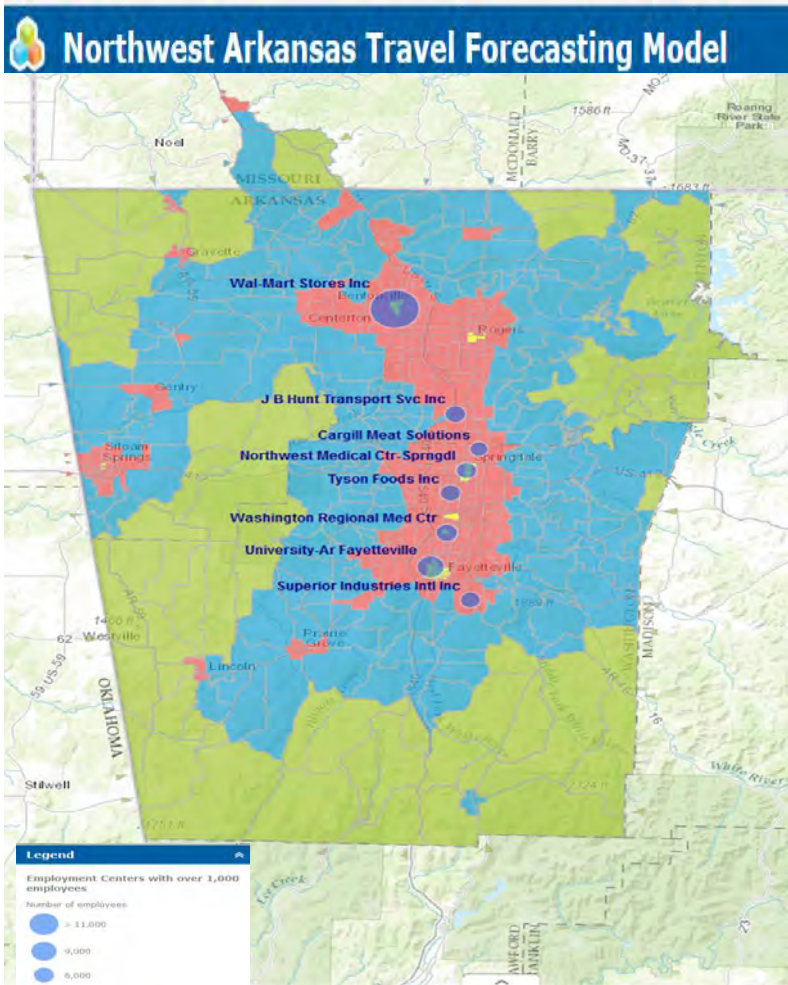
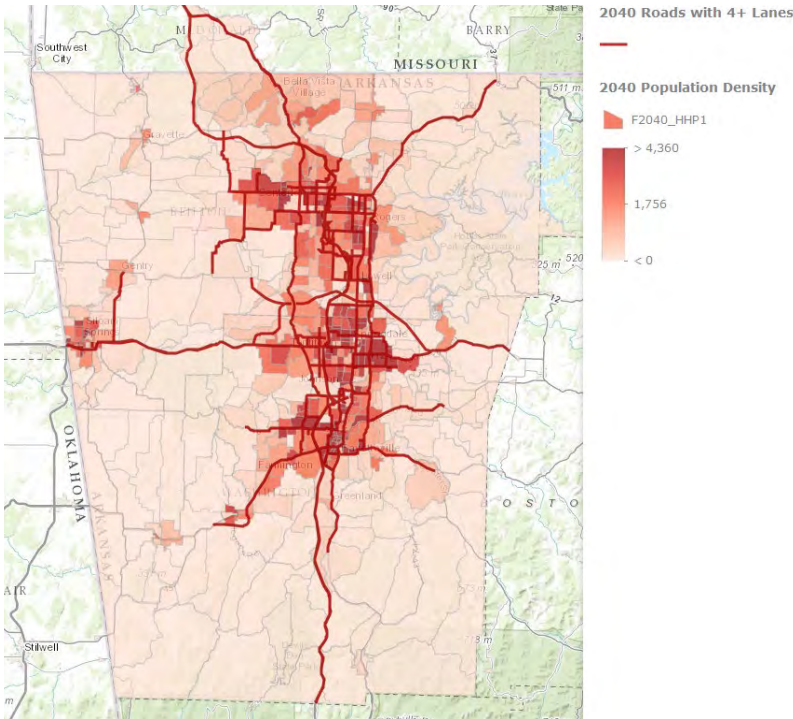
Travel Demand Forecasting Model Upgrade

The Travel Demand Forecasting Model Upgrade/Transit was finalized in December 2015. Consultants and NWARPC staff worked together to finalize the tasks outlined in the project. These tasks included an upgrade and validation/calibration of the base year 2010,a forecast year 2040, adding the new geography of Missouri as part of the TMA, an improved Special Generator, creating a blue-print for future improvements, and, most importantly adding a mode choice model.

The model is now able to forecast travel based on a logit model which takes into consideration the level of service characteristics, the household attributes and the cost of each mode.

In 2015 NWARPC utilized its Section 5307 apportionment funds for the Travel Demand Forecasting Model Upgrade and addition of a Transit Component.

The model enhancement allowed for addition of a transit module to the existing transportation model. The model now includes a mode choice model that is sensitive to changes in transit service delivery utilizing best practice techniques.



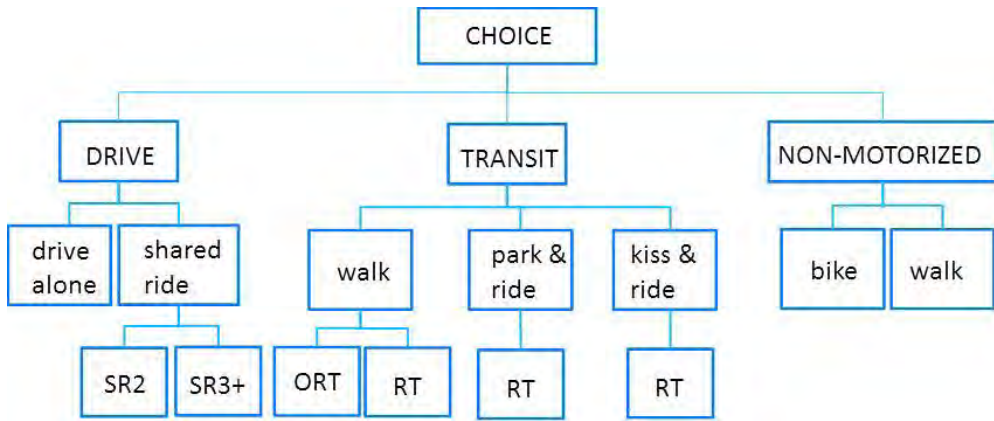
KEY WORK PERFORMED

- Reviewed the model input parameters in the population synthesis, trip generation, and trip distribution models and made adjustments to match observed data.
- Built a transit planning network with accompanying access link system and skimming protocols so as to be able to include transit service characteristics in the mode choice model.
- Built and calibrated a mode choice model that is sensitive to changes in transit service delivery utilizing best practice techniques.
- Conducted transit and highway validation.

The 2040 model scenario was utilized in mapping the constrained and unconstrained projects as part of the 2040 MTP.

NWARPC has been collaborating with the two transit agencies (Ozark Regional Transit and Razorback Transit) in identifying further model enhancements, transit scenario testing, future scenario development and model sensitivity testing.

A new household survey, boardings and alightings survey and/or other additional data sources are recommended for future improvements of the model.



Mode Choice Model Nested Structure



Northwest Arkansas Razorback Regional Greenway

May 2, 2015 marked the official opening of the Northwest Arkansas Razorback Regional Greenway. The Grand Opening ceremony took place at the Shiloh Square in Springdale. The 37 mile long Greenway stretches between south Fayetteville to north Bentonville and is a significant project for Northwest Arkansas.

The project received funding of \$15M from the TIGER II (U.S. DOT's Transportation Improvements Generating Economic Recovery program), with a match share of \$3.75M from the Walton Family Foundation.

Because of the unique combination of involved elected officials and community interest, philanthropic support, and private sector leadership, this project was able to capitalize on the TIGER II program to quickly put in place a nationally significant project.

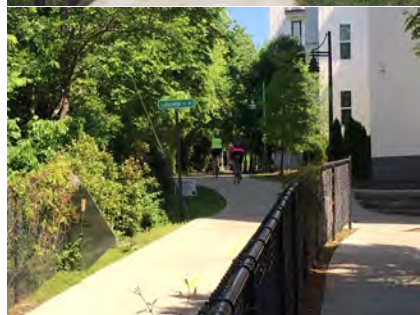
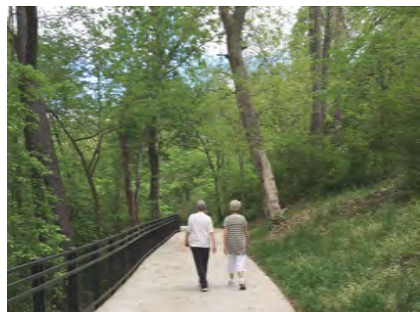
“Love, love, love newly opened Razorback Greenway! Fantastic!” - Public Comment

In early 2015, a mile marker sign program began with installation of 38 mile markers, beginning in Fayetteville at “0” to end at mile marker “37” in Bella Vista, with funding provided by each of the six cities on the Greenway.

In late 2015, the wayfinding sign program began to increase the ease of use of the Greenway. A complete sign package was developed with funding provided by the Walton Family Foundation for the wayfinding signs. Signage for trailheads, kiosks, etc. will be completed by cities as funding becomes available,

“I call it the extraordinary partnership, because that is what it is. It really is remarkable the amount of people that came together to make this a reality”.
John McLarty

NWARPC, the Bicycle Coalition of the Ozarks, Center for Advanced Spatial Technologies at the University of Arkansas and the Northwest Arkansas Council also developed the Northwest Arkansas Trails Online Map and supporting geodatabase at <https://trails.cast.uark.edu/>



Henry Award for the Razorback Regional Greenway

The Henry Awards Ceremony began at the 7th Annual Governor’s Conference on Tourism in 1981 and has become an important part of this gathering of tourism leaders and one of the most prestigious tourism industry awards in Arkansas. Recognizing those individuals, businesses, and organizations which have distinguished themselves during the past year is now a tradition.

At the 2016 Henry Awards Ceremony, as part of the Governor’s Conference on Tourism, the Razorback Regional Greenway received the Natural State Award.

NWARPC received the award for the completion of the Razorback Regional Greenway in a ceremony in Springdale in March 2016.

The award is presented for a project that “stands out in the crowd” because of its unique appeal, media coverage, creative approach, and enhancement of community pride, thus benefitting the state’s quality of life.

The Henry Awards honor Henri de Tonti, the man historians consider one of the first “Arkansas Travelers”



NWARPC Director Jeff Hawkins and John McLarty accepting the Henry Award for the Razorback Greenway

Northwest Arkansas Bicycle and Pedestrian Master Plan

“Northwest Arkansas’ trail and roadway system will comfortably, safely, and efficiently accommodate bicycle and pedestrian transportation. The linking of local and regional attractions will make the area a world-class bicycle and pedestrian destination. Walking and bicycling will become a common, enjoyable, and viable transportation and recreation choice that promotes active living and a high quality of life in Northwest Arkansas.”

Walk Bike Northwest Arkansas

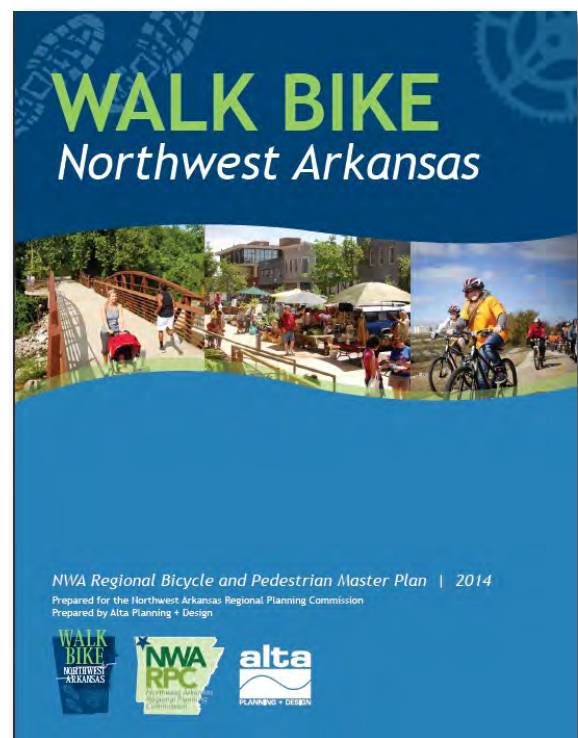
The Northwest Arkansas Regional Bicycle and Pedestrian Master Plan was adopted by the RPC/Policy Committee on December 1, 2015 and is considered part of the MTP. Trail plans of 25 Northwest Arkansas communities with a population with a 1,000 or more proposed the development of bicycle and pedestrian transportation and recreation facilities in their communities. The network includes on-road and off-road facilities such as shared-use paved trails, separated bikeways, sidewalks, and shared roadways.



A comprehensive approach to create bicycle and walk-friendly communities is more effective than a singular approach that only addresses infrastructure issues. Recognizing this, the national Bicycle Friendly Community program, administered by the League of American Bicyclists, and the Walk Friendly Community program, administered by the National Center for Walking and Bicycling, recommend a multifaceted approach based on the five Es: **Engineering, Education, Encouragement, Enforcement, and Evaluation.**

A summit with an overall session and a session for Education, Engineering and Enforcement was held on October 27, 2015 for all cities. Many law enforcement, planners, engineers, and trail coordinators attended these training sessions to gain more knowledge and to meet the 5 E's requirements.

More information about the Plan can be found at <http://www.nwabikepedplan.com>



Northwest Arkansas A Bicycle Friendly Community



In November 2015, Northwest Arkansas - Benton and Washington Counties - was named a Bronze Bicycle Friendly CommunitySM by the League of American Bicyclists. With this designation, Northwest Arkansas joined 351 visionary communities from across the country. With the announcement of 54 new and renewing BFCs last year, Northwest Arkansas joined a leading group of communities, in all 50 states, that are transforming the nation's neighbourhoods.

“We applaud these communities for making bicycling a safe and convenient option for transportation and recreation. We are encouraged by the growing number of leaders who see bicycling as a way to build more vibrant, healthy, sustainable and connected communities and be a part of the solution to many complex challenges faced at both the community and national levels.”

Bill Nesper, Vice President of Programs at the League of American Bicyclists



Mayor Long, Mayor Keeney, Mayor Sprouse, John McLarty, Paxton Roberts and Mayor Jordan at the Press Release Event for the Bronze Bicycle Friendly Community Designation in Springdale

Public Transportation

NWARPC is the designated recipient for the Fayetteville-Springdale-Rogers AR-MO Urbanized Area for the Urbanized Area Formula Grants that are apportioned by FTA. The apportioned Section 5339 and Section 5307 FTA Urbanized Area Formula funds are utilized by Ozark Regional Transit and Razorback Transit for capital, operating assistance, preventative maintenance, ADA paratransit service and enhancements.

Ozark Regional Transit (ORT)

In 2015 ORT operated 13 fixed routes with 14 buses in Fayetteville, Springdale, Rogers and Bentonville and 6 paratransit routes in rural areas and ADA paratransit in urban areas.

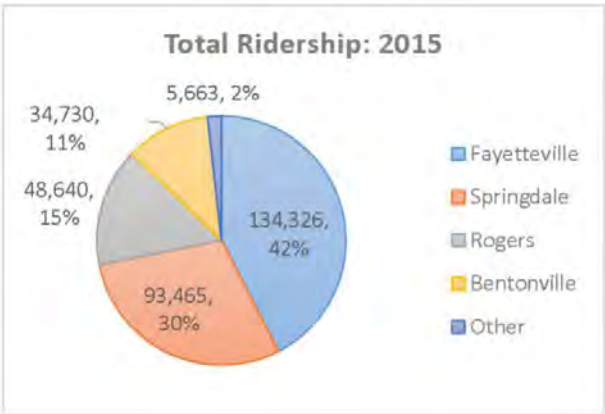
ORT's ridership increased for both fixed routes and paratransit passengers:

- **287,458 Fixed Route passengers which represents a 5 percent increase compared to 2014.**
- **29,990 Paratransit passengers which represents a 6 percent increase compared to 2014.**

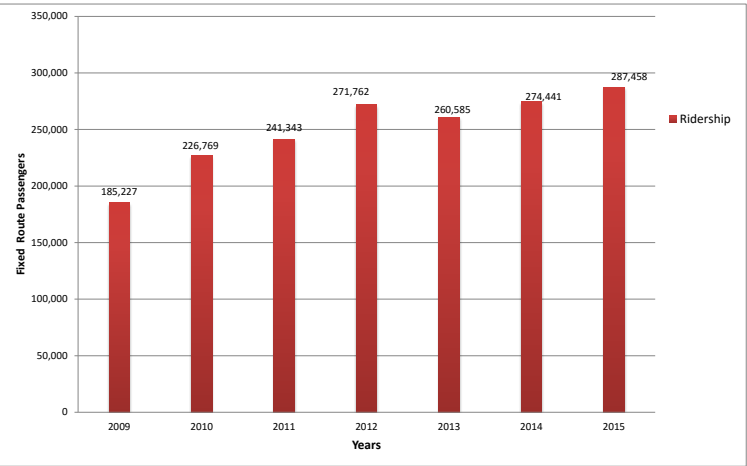


In 2015 there were 1,384,807 miles traveled on all ORT vehicles and a total of 332,462 passengers on all routes (including charters).

ORT Ridership by City



Fixed Route Ridership 2009-2015



Razorback Transit

In 2015 Razorback Transit had a fleet of 25 buses and 6 paratransit vans.

Razorback Transit provides fare-free transportation to on-campus locations and major off-campus living and shopping areas from 7:00 AM to 6:00 PM, Monday through Friday on 11 fixed routes during the Fall and Spring semesters. Reduced service is provided from 6:00 PM to 10:30 PM, Monday through Friday and 7:00 AM to 10:30 PM on Saturdays during the Fall and Spring semesters.

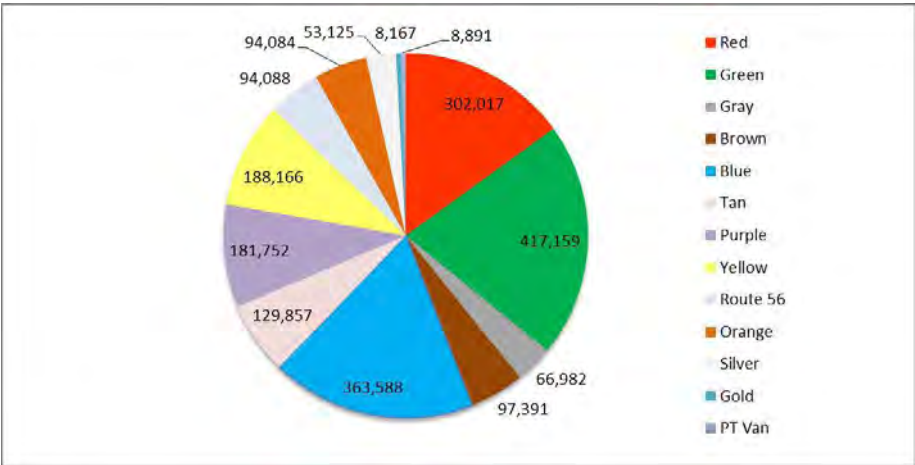
Complimentary paratransit service is provided during the same hours as fixed route service.

Approximately 22% (431,414 riders) of the total fixed route ridership was generated by non-students in FY 2015 (July 1 2014 - June 30, 2015).

The total ridership for Razorback Transit in FY 2015 was 2,005,267.

The total ridership remained approximately the same as FY 2014 (with a slight increase of 1%).

Razorback Transit Ridership by Route



Transit Model

The primary purpose of the travel demand forecasting model enhancement was to develop a state-of-the-practice mode choice model.

The enhancement of the model required the development of a transit network in TransCAD that defines each transit route in the Northwest Arkansas model's study area.

The transit route system was created by NWARPC and constitutes the basis of the 2010 base model. Future scenarios were developed for 2040 and will continue to be developed for 2020 and 2030.

The mode choice nesting structure for transit includes both ORT and Razorback Transit as walk to transit, park and ride to transit and drop-off to transit.

Future model scenarios will include planned routes and service improvements.

Stormwater Management

On August 1, 2015, the Arkansas Department of Environmental Quality issued the third consecutive five-year MS4 Stormwater General Permit which mandates that each of 21 regulated jurisdictions in Northwest Arkansas develop and implement their own stormwater management program to reduce the contamination of illicit discharges.

Northwest Arkansas MS4s Stormwater Compliance Group

A key role of the NWARPC is coordinating regular meetings of the MS4 Stormwater Compliance Group (SCG). Composed of local MS4 representatives, NWARPC staff and the UACES, the SCG meets monthly to discuss permit compliance challenges, local stormwater education program needs and accomplishments, and regional coordination of stormwater protection efforts.

In 2015, meetings also featured guest speakers including Colin Massey (UACES) who produced 10 podcast episodes related to stormwater and previewed for the group Episode 1 – “Watershed Stakeholders and Partnerships”; Tim Conklin (NWARPC) updated the SCG on the “Cave Springs Area Karst Resource Conservation Study”; Elizabeth Bowen (NWARPC) presented the NWA Open Space Plan; Scott Kelly (Regional Project Manager with the Army Corps of Engineers, Beaver Lake) explained the “SW Division Regulatory Program”; and Larry Lloyd (COO Beaver Water District) updated the SCG on “Act 335 and the Arkansas Nutrient Water Quality Trading Advisory Panel”.

A training session on completing the ADEQ Annual Report was held with ADEQ officials. Other training sessions that the SCG members assisted in staging and/or attended included the NWA Landscape Maintenance Workshop; the EPA Region 6 Stormwater Conference; and the International Erosion Control Association’s NWA Roadshow.

Northwest Arkansas MS4s:

Bella Vista

Benton County

Bentonville

Bethel Heights

Cave Springs

Centerton

Elkins

Elm Springs

Farmington

Fayetteville

Greenland

Johnson

Little Flock

Lowell

Pea Ridge

Prairie Grove

Rogers

Springdale

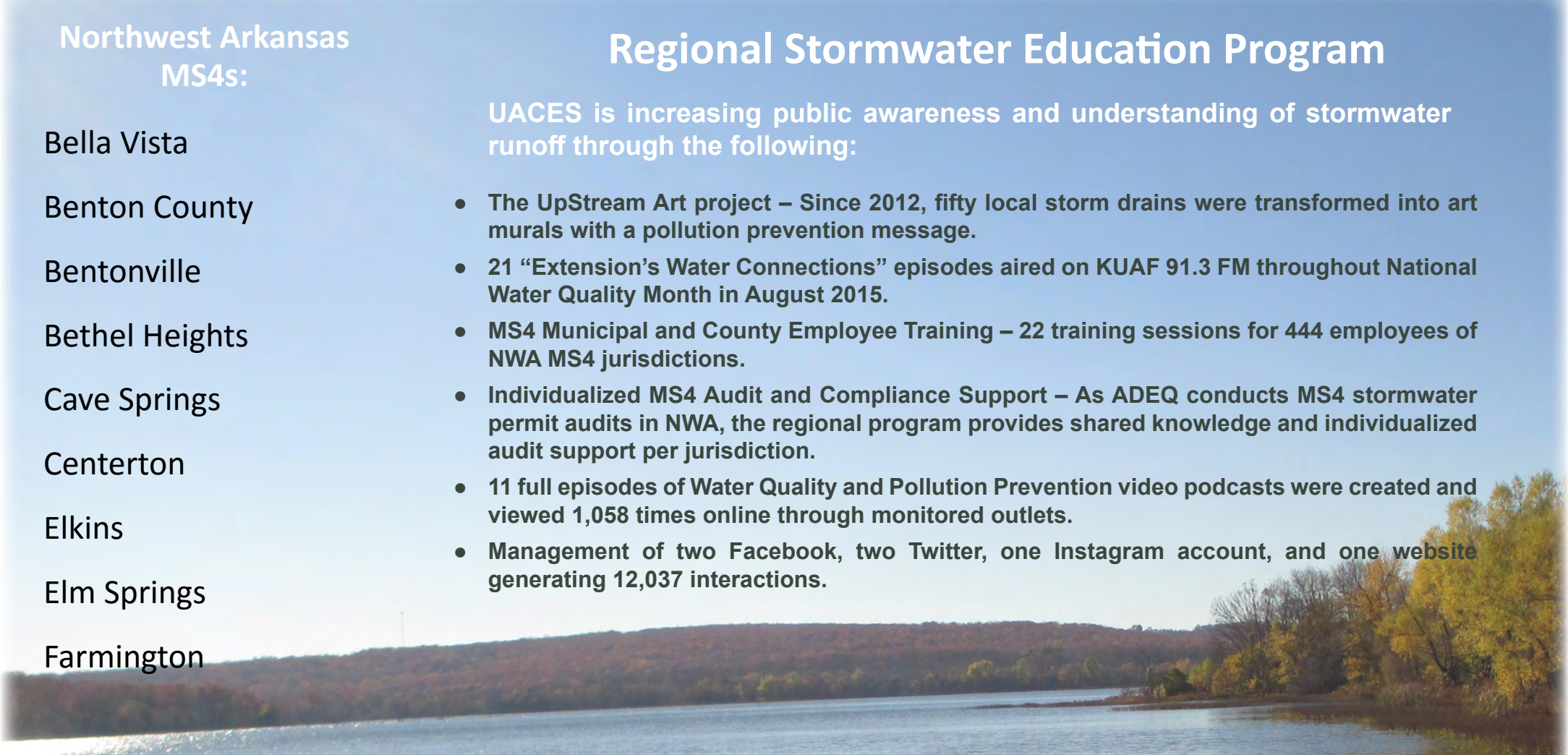
Tontitown

University of Arkansas

Regional Stormwater Education Program

UACES is increasing public awareness and understanding of stormwater runoff through the following:

- The UpStream Art project – Since 2012, fifty local storm drains were transformed into art murals with a pollution prevention message.
- 21 “Extension’s Water Connections” episodes aired on KUAF 91.3 FM throughout National Water Quality Month in August 2015.
- MS4 Municipal and County Employee Training – 22 training sessions for 444 employees of NWA MS4 jurisdictions.
- Individualized MS4 Audit and Compliance Support – As ADEQ conducts MS4 stormwater permit audits in NWA, the regional program provides shared knowledge and individualized audit support per jurisdiction.
- 11 full episodes of Water Quality and Pollution Prevention video podcasts were created and viewed 1,058 times online through monitored outlets.
- Management of two Facebook, two Twitter, one Instagram account, and one website generating 12,037 interactions.



MS4s meetings at the Northwest Arkansas Regional Planning Commission.



The MS4 Stormwater Compliance Group continues to be a model for other MS4s in Arkansas.

Northwest Arkansas Open Space Plan

The work on the Northwest Arkansas Regional Open Space Plan began in early 2014, with the development and public input process carried out throughout 2015 and the adoption of the Plan by the RPC/Policy Committee on December 1, 2015

The Plan identifies the natural landscapes and open spaces that make Northwest Arkansas an attractive place to live, and includes a comprehensive strategy for the conservation of these natural assets. The Plan is consistent with the regional goal of continued growth and development. Landowner participation in conservation programs is welcome and encouraged, but strictly voluntary. To this end, the Plan features a detailed mapping inventory of regional resources, and a ‘toolbox’ of strategies that landowners, developers, and governments can draw upon to balance regionally important goals of land conservation and development. The Plan was financed through a grant from the Walton Family Foundation.

The Plan combined extensive public input and stakeholder involvement with state-of-the-art analysis of the region’s natural, cultural, historic, agricultural, and recreation resources.

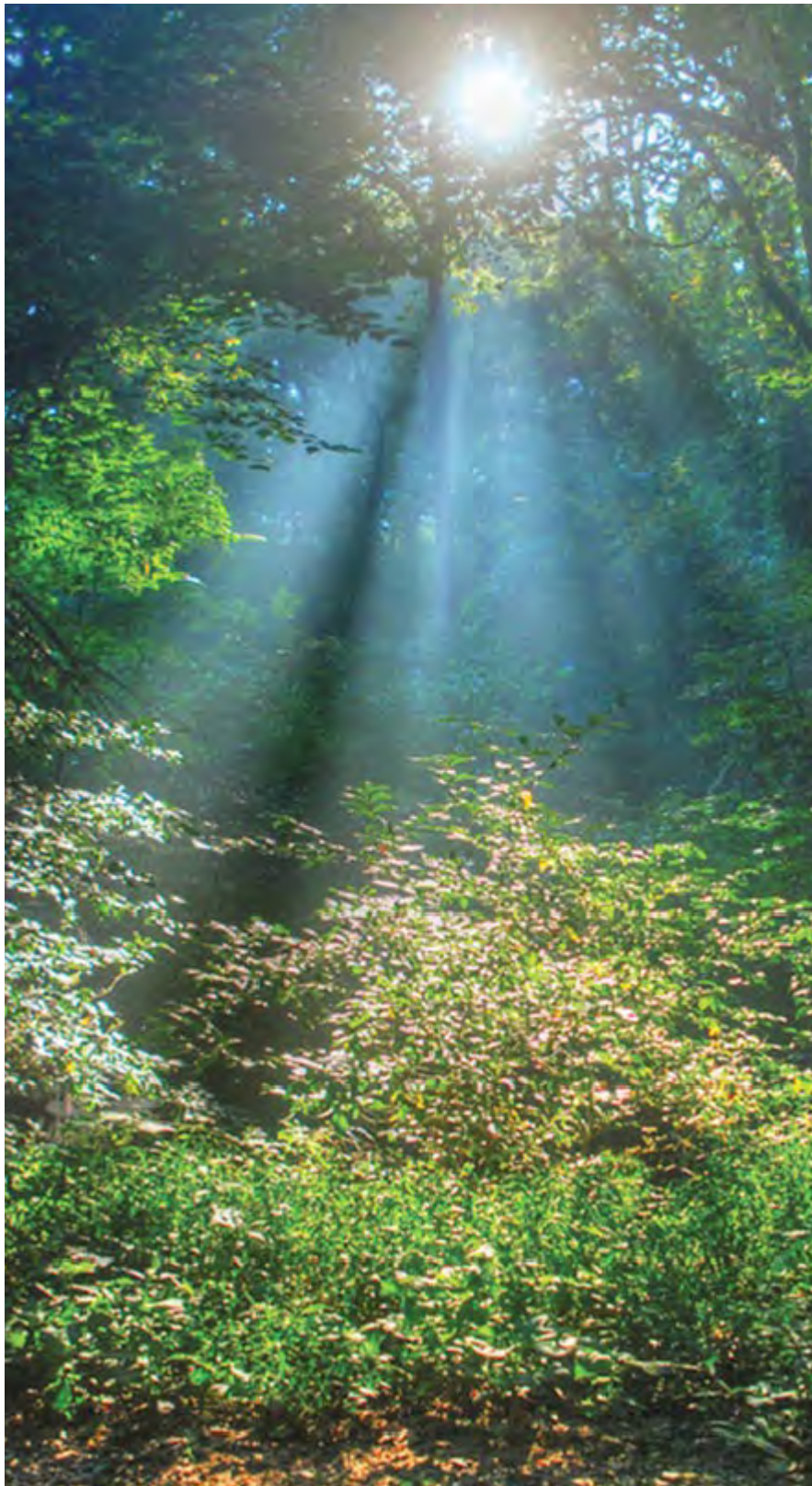
All the information was compiled as a set of maps and data that show priority areas for conservation throughout the region. The intent of the Plan is to involve and work with willing landowners who wish to conserve their land, using the maps as a tool.

The Open Space Committee under the leadership of NWARPC, has been established to help implement the Plan’s recommendations.



The Northwest Arkansas
Open Space Plan

Between January and November 2015, NWARPC staff presented the NWA Open Space Plan to over 2,000 attendees at over 40 community meetings, events and public input forums.



Open Space Priority Maps

Open space resources are shown with a priority range of 1-5, with the higher values shown in darker shades of green. This map should be considered as a starting point for regional discussions about conservation priorities.

All landowners are welcome to submit ideas for land conservation, regardless of the priority ranking on these maps.



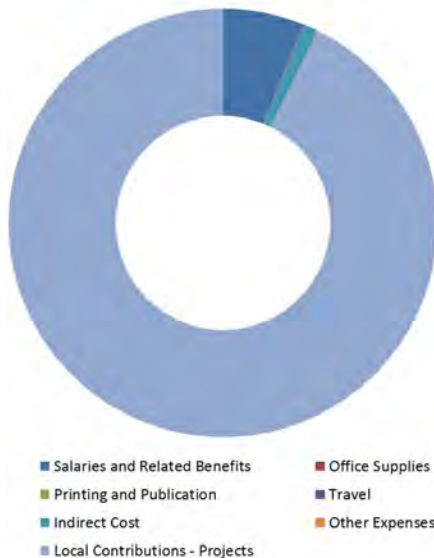
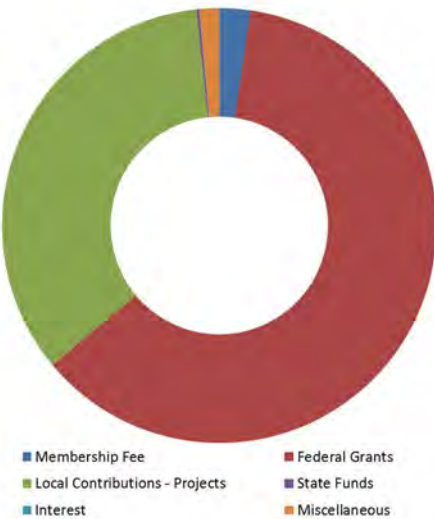
Overall Priority Map

For more information visit
<http://nwaopenspace.org>

Financial Statement

The table and graphs below illustrate the Northwest Arkansas Regional Planning Commission's Revenue Income and Expenses for the Fiscal Year 2015 (July 1, 2014 to June 30, 2015).

INCOME	AMOUNT
Membership fees	\$313,749
Federal Grants	\$8,409,648
Local Contributions/Projects	\$4,687,790
State Funds	\$30,000
Interest	\$2,108
Miscellaneous	\$198,294
TOTAL	\$13,641,589
EXPENSES	AMOUNT
Salaries and Related Benefits	\$795,270
Office Supplies	\$1,780
Printing and Publication	\$5,104
Travel	\$12,240
Indirect Cost	\$130,925
Other Expenses	\$4,841
Projects	\$12,039,119
TOTAL	\$12,989,279



Recognition



Butch Bartholomew
(Photo by Washington County Observer)

Michael “Butch” Bartholomew
Northwest Arkansas Regional Planning Commission/Policy Committee

Butch Bartholomew retired from his position as the West Fork’s street and utilities superintendent on April 30, 2015. He was also an Executive Committee member on the Northwest Arkansas Regional Planning Commission representing West Fork for more than 25 years and served as Chair from 2002-2003. Butch retired after a nearly 44 year career with the City of West Fork that included building city parks and police and fire stations and serving as the business manager for the city. We wish him a long and enjoyable retirement.



John McLarty on the
Razorback Greenway

John McLarty
Assistant Director/NARTS Study Director - Northwest Arkansas Regional Planning Commission

John McLarty retired in December 2015 from the position of Assistant Director/NARTS Study Director of the Northwest Arkansas Regional Planning Commission after 15 years of work for the Commission. Since 2011, John has served as the project manager for the Razorback Regional Greenway and took this project to fruition in 2015. In early 2000, he also initiated the active transportation group, that spear-headed the idea of developing a regional trail system including all the communities in Benton and Washington Counties. Because of this effort, in 2014, funding was obtained to complete the Northwest Arkansas Regional Bicycle and Pedestrian Master Plan and following that, the Northwest Arkansas Open Space Plan. John’s interest in history and preservation of local heritage also led him to initiate research that was focused on the Trail of Tears and Civil War routes in Northwest Arkansas and the creation of the Northwest Arkansas Heritage Trail Plan.

He currently serves as the president of the Heritage Trail Partners and he is also the president of the Arkansas Chapter of the Trail of Tears Association and treasurer of the National Trail of Tears Association. John dedicated a lot of his time and energy to planning and transportation projects and research of historical routes while working for the Commission and he leaves behind an impressive and long lasting legacy for all who worked with him throughout the years. We wish him the best and know that he will be enjoying riding the trails of Northwest Arkansas and visiting many national parks for many years to come.

Clearinghouse Reviews

NWARPC is the federally designated regional clearinghouse for the Northwest Arkansas Region. The purpose of this designation, which is made pursuant to Executive Order 12372, is to insure that requests for federal funding are reviewed to determine compatibility with local and regional plans, and that such funding will not be used for duplicative purposes.

In 2015, federal-aid grants with a total value of \$48 million were submitted and were cleared in order to insure that proposed uses were consistent with, and in furtherance of, the goals, objectives and planned development for the region.

Conferences and Continuing Education

March 26, 2015	Staff attended Arkansas GIS Spring Meeting in Little Rock, Arkansas.
April 18-22, 2015	A staff member attended the American Planning Association National Conference in Seattle, Washington.
April 18, 2015	Staff attended the Outdoor Recreation Grant workshop held at NWARPC.
April 29-30, 2015	Staff attended the AHTD Transportation Planning Conference in North Little Rock, Arkansas.
June 30, 2015	Staff attended an AHTD public involvement meeting in Siloam Springs concerning the Hwy 43 KCS Railroad overpass.
September 30, 2015	Staff attended a MoDOT Planning Partners meeting in Springfield, Missouri.
October 3-5, 2015	A staff member attended the Trail of Tears Association Annual Conference in Cape Girardeau, Missouri.
October 22, 2015	Staff attended the Long Range Intermodal Transportation Plan open house led by AHTD and held at the NWARPC office.
November 3, 2015	Staff attended the Arkansas Statewide Bicycle and Pedestrian Plan open house led by AHTD and held at NWARPC.

NWARPC Staff

- Jeff Hawkins - Executive Director
- Tim Conklin, AICP - Assistant Director/NARTS Study Director
- Donna Lange - Office Manager
- Celia Scott-Silkwood, AICP - Regional Planner
- Cristina Scarlat - GIS Coordinator/Travel Demand Modeler
- Elizabeth Bowen - Project Manager
- Stephanie Shaw - Transportation GIS Analyst

NWARPC Members

- City of Avoca - Mayor Jordan W. Sullivan
- City of Bella Vista - Mayor Peter Christie
- Benton County - Judge Bob Clinard, John Sudduth
- City of Bentonville - Mayor Bob McCaslin, Shelli Kerr, Troy Galloway
- City of Bethel Heights - Mayor Cynthia J. Black
- City of Cave Springs - Mayor Travis Lee
- City of Centerton - Mayor Bill Edwards
- City of Decatur - Mayor Bob Tharp
- City of Elkins - Mayor Bruce Ledford
- City of Elm Springs - Mayor Harold D. Douthit
- City of Farmington - Mayor Ernie Penn, Melissa McCarville
- City of Fayetteville - Mayor Lioneld Jordan, Justin Tennant, Jeremy Pate
- City of Garfield - Mayor Gary L. Blackburn
- City of Gateway - Mayor Frank Hackler
- City of Gentry - Mayor Kevin Johnston
- City of Goshen - Mayor Joe Benson
- City of Gravette - Mayor Kurt Maddox
- City of Greenland - Mayor Bill Groom
- City of Highfill - Cassie Elliott
- City of Hindsville - Mayor X Dotson
- City of Huntsville - Mayor Darrell Trahan
- City of Johnson - Mayor Chris Keeney
- City of Lincoln - Mayor Rob Hulse
- City of Little Flock - Mayor Buddy Blue
- City of Lowell - Mayor Eldon Long
- McDonald County, Missouri - County Commissioner Keith Lindquist
- City of Pea Ridge - Mayor Jackie Crabtree
- City of Pineville, Missouri - Mayor Greg Sweeten
- City of Prairie Grove - Mayor Sonny Hudson
- City of Rogers - Mayor Greg Hines, Bob Crafton, Steve Glass
- City of Siloam Springs - Mayor John Turner, Ben Rhodes
- City of Springdale - Mayor Doug Sprouse, Patsy Christie, Jim Ulmer
- City of Springtown - Mayor Preston Barrett
- City of Sulphur Springs - Mayor Greg Barber
- City of Tontitown - Mayor Paul Colvin Jr.
- Washington County - Juliet Richey, George Butler
- City of West Fork - Mayor Charles Rossetti
- AHTD - Planning - Jesse Jones
- MODOT - Frank Miller, Eva Voss
- Beaver Water District - Alan Fontenberry
- Razorback Transit - Gary Smith, Adam Waddell
- University of Arkansas - Mike Johnson

Commission Officers

Mayor Eldon Long - Chair


Mayor Bill Groom - Vice-Chair

Mayor Sonny Hudson - Treasurer

Mayor Kevin Johnston - Secretary

NORTHWEST ARKANSAS REGIONAL PLANNING COMMISSION NOTICE OF NONDISCRIMINATION

The Northwest Arkansas Regional Planning Commission (NWARPC) complies with all civil rights provisions of federal statutes and related authorities that prohibit discrimination in programs and activities receiving federal financial assistance. Therefore, the NWARPC does not discriminate on the basis of race, sex, color, age, national origin, religion or disability, in the admission, access to and treatment in NWARPC's programs and activities, as well as the NWARPC's hiring or employment practices. Complaints of alleged discrimination and inquiries regarding the NWARPC's nondiscrimination policies may be directed to Celia Scott-Silkwood, AICP, Regional Planner – EEO/DBE (ADA/504/Title VI Coordinator), 1311 Clayton, Springdale, AR 72762, (479) 751-7125, (Voice/TTY 7-1-1 or 1-800-285-1131) or the following email address: cscott-silkwood@nwarpc.org. This notice is available from the ADA/504/Title VI Coordinator in large print, on audiotape and in Braille. If information is needed in another language, contact Celia Scott-Silkwood. Si necesita informacion en otro idioma, comuniqese Celia Scott-Silkwood, cscott-silkwood@nwarpc.org.



1311 Clayton St., Springdale, AR 72762
Tel: 479-751-7125
Fax: 479-751-7150
<http://nwarpc.org>